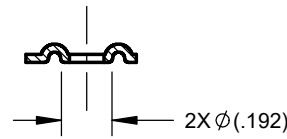
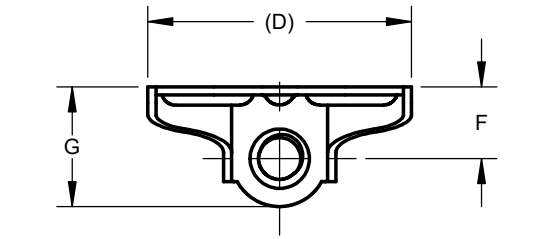
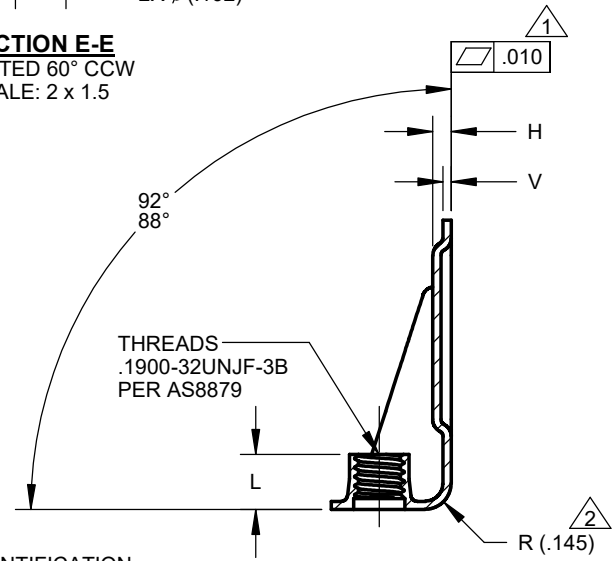
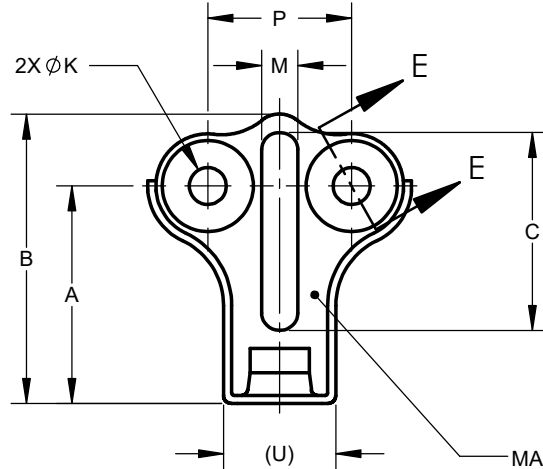


MANUFACTURE OF THE PROPRIETARY PARTS SHOWN HERE WITHOUT WRITTEN CONSENT OF HOWMET FASTENING SYSTEMS IS ABSOLUTELY PROHIBITED.



SECTION E-E
ROTATED 60° CCW
SCALE: 2 x 1.5



MANUFACTURER'S IDENTIFICATION
RAISED OR DEPRESSED .010 MAX
LOCATION OPTIONAL

HFS PART NO.	A	B	C	(D)	F	G	H	ØK	L	M	P	(U)	V	
T8326C1032B-	1	.465 .435	.745 .715	.415 .385	1.038	.296 .266	.480 .450	.087 .057	.135 .130	.215 .185	.175 .145	.564 .560	.375	.037 .032
	2	.665 .635	.945 .915	.615 .585										
	3	.865 .835	1.145 1.115	.765 .735										

MATERIAL: A286 CORROSION RESISTANT STEEL PER AMS5525 (UNS S66286).

FINISH: T8326C1032B-(*) -- SILVER PLATE PER AMS2411.
T8326C1032B-(*)E -- ZINC NICKEL PLATE PER AMS2417 TYPE 2 PLUS SOLID FILM LUBE PER AS5272 TYPE I.

PERFORMANCE: NASM25027.

- NOTES:**
1. MOUNTING SURFACE FLATNESS TO BE MEASURED ALONG THE COMMON AXIS OF THE RIVET HOLES. THE MAXIMUM FLATNESS BENEATH ONE RIVET HOLE BOSS TO BE MEASURED WITH A FEELER GAGE WHEN THE OPPOSITE BOSS IS IN CONTACT WITH A FLAT SURFACE.
 2. BEND RADIUS TANGENT WITH THREADED BASE SHALL NOT INTERSECT THREADED HOLE.
 3. UNLESS OTHERWISE SPECIFIED:
A) DIMENSIONS APPLY AFTER FINISH, BUT BEFORE LUBRICATION.

© 2022 HOWMET AEROSPACE INC. ALL RIGHTS RESERVED.

THIRD ANGLE PROJECTION EAR EXPORT CONTROLLED TECHNICAL DATA: DISTRIBUTION LIMITED TO U.S. PERSONS OR THOSE NON-U.S. PERSONS COVERED BY AN APPROPRIATE EXPORT LICENSE OR ALLOWED FOR BY THE APPROPRIATE REGULATIONS, ECCN: EAR99.

APPROVED DATE 04MAY2012
REV. LETTER AND DATE: E 15NOV2022
CUSTOMER:

CURRENT DESIGN ACTIVITY:

HOWMET AEROSPACE

Howmet Fastening Systems
800 S State College Boulevard
Fullerton, California, 92831
<http://www.hfs.howmet.com>

TITLE:
**NUT - ANCHOR,
RIGHT ANGLE, STRAIGHT BACK,
SELF LOCKING**

UNLESS OTHERWISE SPECIFIED, DIMENSIONS ARE
IN INCHES & TO ASME Y14.5-2018 TOLERANCES:
DECIMALS = ±.010; ANGLES = ±2°

CAGE CODE: 52828
SALES DRAWING No.
T8326C1032B-(*)(*)
SHEET 1 OF 1

FILED AS: S_T8326C1032B-(*)