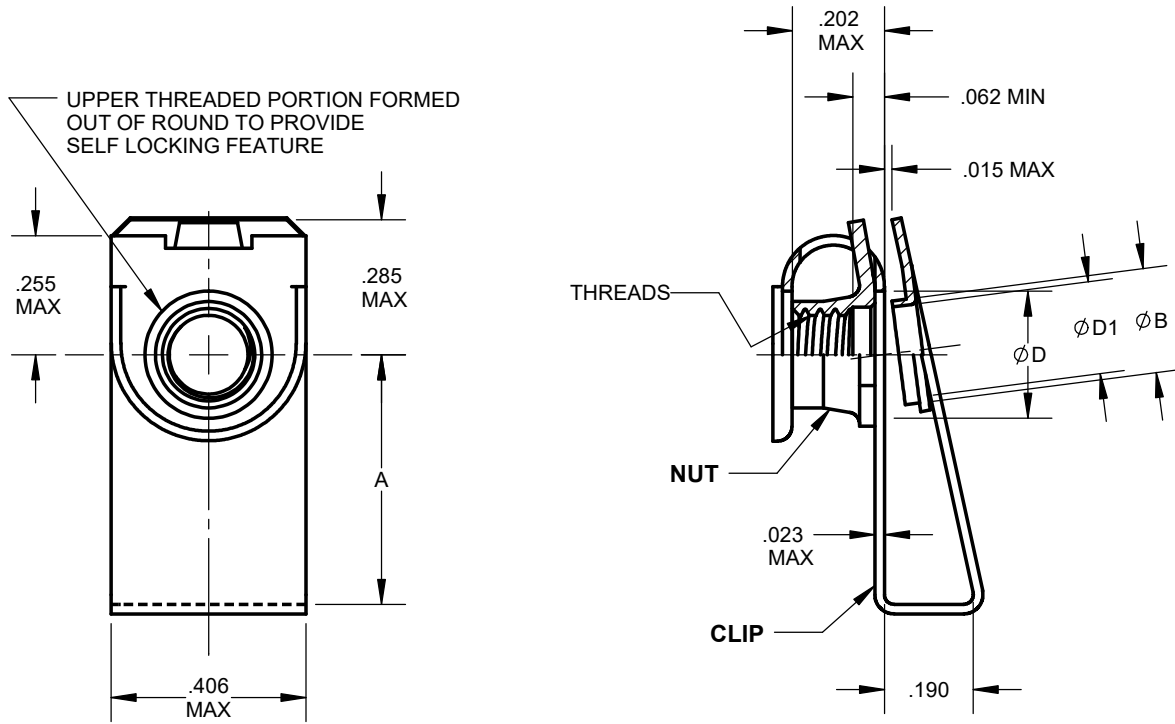


MANUFACTURE OF THE PROPRIETARY PARTS SHOWN HERE WITHOUT WRITTEN CONSENT OF HOWMET FASTENING SYSTEMS IS ABSOLUTELY PROHIBITED.



HFS PART NO.	THREADS PER AS8879	A	ØB MAX	ØD MIN	ØD1 MIN	EDGE MARGIN NOMINAL	MAXIMUM INSTALLTION HOLE SIZE	RECOMMENDED INSTALLTION HOLE SIZE	PANEL THICKNESS	
RC500-	8-08	.1640-32UNJC-3B	.530	.191	.192	.168	.500	.234	.192-.202	
	10-08		.510							
	8-3	.1900-32UNJF-3B	.675	.218	.219	.193	.500	.261	.219-.229	
			10-3							.655
			10G-3							.530
			8G-3							.510

MATERIAL: NUT & CLIP -- C1050 CARBON STEEL PER AMS5085 (UNS G10500)

HEAT TREAT: NUT -- 46 HRC MAX

CLIP -- AUSTEMPER 48-51 HRC PER AMS-H-6875.

FINISH: NUT -- CADMIUM PLATE PER AMS-QQ-P-416, TYPE II, CLASS 2, PLUS SOLID FILM LUBE PER AS5272, TYPE I.

CLIP -- CADMIUM PLATE PER AMS-QQ-P-416, TYPE II, CLASS 1.

PERFORMANCE: NASM25027.

© 2022 HOWMET AEROSPACE INC. ALL RIGHTS RESERVED.

THIRD ANGLE PROJECTION EAR EXPORT CONTROLLED TECHNICAL DATA: DISTRIBUTION LIMITED TO U.S. PERSONS OR THOSE NON-U.S. PERSONS COVERED BY AN APPROPRIATE EXPORT LICENSE OR ALLOWED FOR BY THE APPROPRIATE REGULATIONS. ECCN: EAR99.

APPROVED DATE

31AUG1993

CURRENT DESIGN ACTIVITY:



Howmet Fastening Systems
800 S State College Boulevard
Fullerton, California, 92831

<http://www.hfs.howmet.com>

TITLE:

CLIP - NUT
SELF LOCKING
ASSEMBLY

CAGE CODE: 52828

SALES DRAWING No.

RC500-(*)-(*)

UNLESS OTHERWISE SPECIFIED, DIMENSIONS ARE
IN INCHES & TO ASME Y14.5-2018 TOLERANCES:
DECIMALS = ±.010; ANGLES = ±2°

SHEET 1 OF 1

FILED AS: s_RC500-(*)-(*)