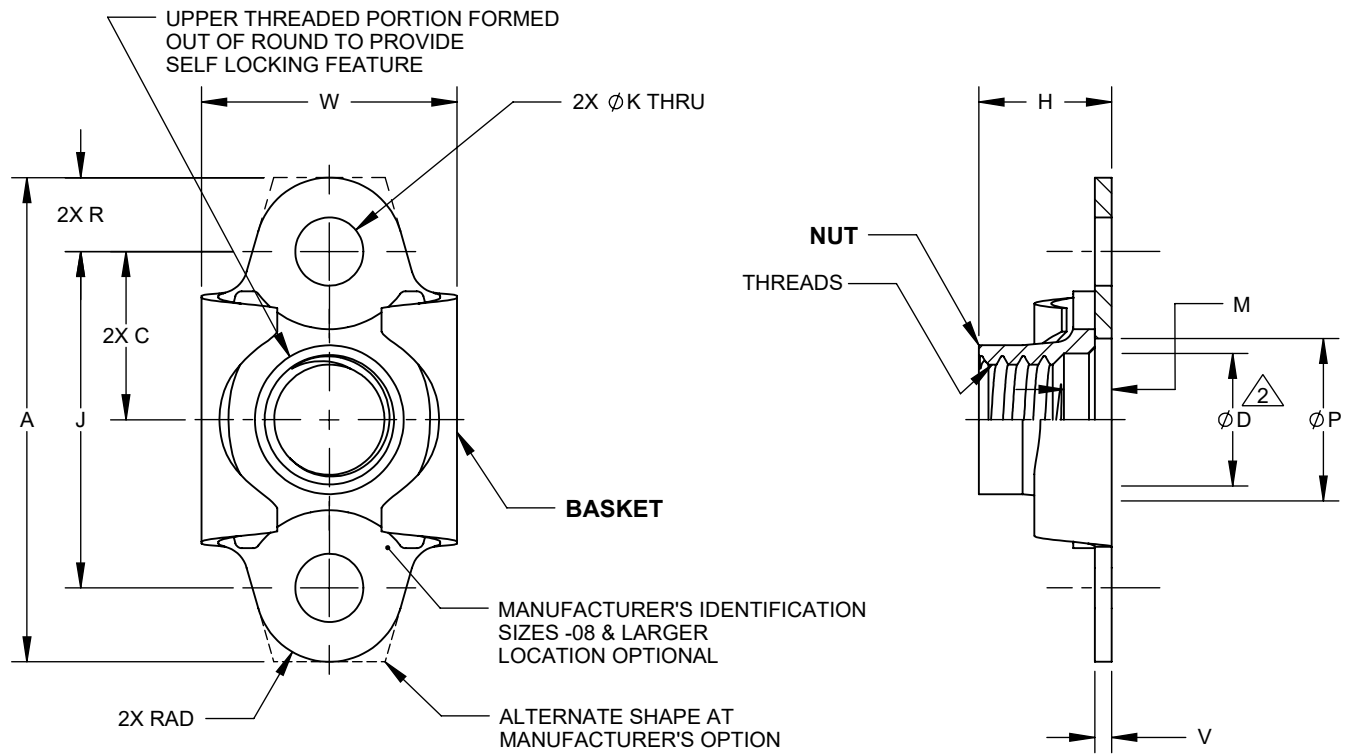


MANUFACTURE OF THE PROPRIETARY PARTS SHOWN HERE WITHOUT WRITTEN CONSENT OF HOWMET FASTENING SYSTEMS IS ABSOLUTELY PROHIBITED.



HFS PART NO.	THREADS PER AS8879	A	C	ØD	H	J	ØK	M	ØP	R	V	W	MAXIMUM WEIGHT lbs/100		
		MAX		MIN	MAX			MIN		MIN					
MF5000-	04	.1120-40UNJC-3B	.651	.208 .198	.116	.153	.408 .404	.103 .098	----	.270 .152	.089	.032 .016	.315 .275	.25	
	06	.1380-32UNJC-3B	.682	.223 .213	.142	.171	.439 .435					.270 .178	.032 .020	.357 .290	.32
	08	.1640-32UNJC-3B	.707	.239 .229	.168	.250	.470 .466					.270 .204	.032 .025	.367 .290	.36
	3	.1900-32UNJF-3B	.739	.255 .245	.194		.502 .498	.062	.270 .230	.100	.032 .025	.416 .290	.39		
	4	.2500-28UNJF-3B	.801	.286 .276	.254	.281	.564 .560				.330 .290	.032 .027	.500 .350	.69	
	5	.3125-24UNJF-3B	1.010	.364 .354	.317	.328	.720 .716				.135 .130	.392 .352	.117	.045 .032	.581 .412

MATERIAL: NUT AND BASKET: C1050 CARBON STEEL PER AMS5085 (UNS G10500).

HEAT TREAT: Rc 49 MAXIMUM.

FINISH: MF5000-(*): CADMIUM PLATE PER AMS-QQ-P-416, TYPE II, CLASS 2, PLUS SOLID FILM LUBE PER AS5272, TYPE I.
MF5000-(*):CW: CADMIUM PLATE PER AMS-QQ-P-416, TYPE II, CLASS 2, PLUS WAX.
MF5000X(*): CADMIUM PLATE PER AMS-QQ-P-416, TYPE II, CLASS 2. NO LUBRICANT.

PERFORMANCE: NASM25027.

NOTES: 1. FLOATABILITY: .020 MINIMUM RADIALLY, FROM CENTERED POSITION.
.020 MAXIMUM AXIALLY, FOR -3 AND SMALLER.
.030 MAXIMUM AXIALLY, FOR -4 AND LARGER.

FOR SIZES -06 AND SMALLER, C'SINK TO ØD.

3. UNLESS OTHERWISE SPECIFIED:
A) DIMENSIONS APPLY AFTER FINISH, BUT BEFORE LUBRICATION.
B) SURFACE TEXTURE 125 MICROINCHES PER ASME B46.1.
C) REMOVE ALL BURRS AND SHARP EDGES.

THIS DRAWING EMBODIES HOWMET FASTENING SYSTEMS CONFIDENTIAL, PROPRIETARY DESIGN & ALL DESIGN, MANUFACTURING PRODUCTION, USE & SALE RIGHTS REGARDING SAME ARE EXPRESSLY RESERVED.

THIRD ANGLE PROJECTION

EAR EXPORT CONTROLLED TECHNICAL DATA: DISTRIBUTION LIMITED TO U.S. PERSONS OR THOSE NON-U.S. PERSONS COVERED BY AN APPROPRIATE EXPORT LICENSE OR ALLOWED FOR BY THE APPROPRIATE REGULATIONS, ECCN: EAR99.

APPROVED DATE
20JUL1977

CURRENT DESIGN ACTIVITY:

TITLE:

CAGE CODE: 15653

REV. LETTER AND DATE:
C 06APR2020



Howmet Fastening Systems
800 S State College Boulevard
Fullerton, California, 92831

*NUT - ANCHOR, 2 LUG,
MINIATURE, FLOATING,
SELF LOCKING, ASSEMBLY*

SALES DRAWING No.

CUSTOMER:

UNLESS OTHERWISE SPECIFIED, DIMENSIONS ARE IN INCHES & TO ASME Y14.5-2018 TOLERANCES: DECIMALS = ±.015; ANGLES = ±2°

MF5000-(*)

SHEET 1 OF 1

<http://www.hfs.howmet.com>

FILED AS: S_MF5000-(-)