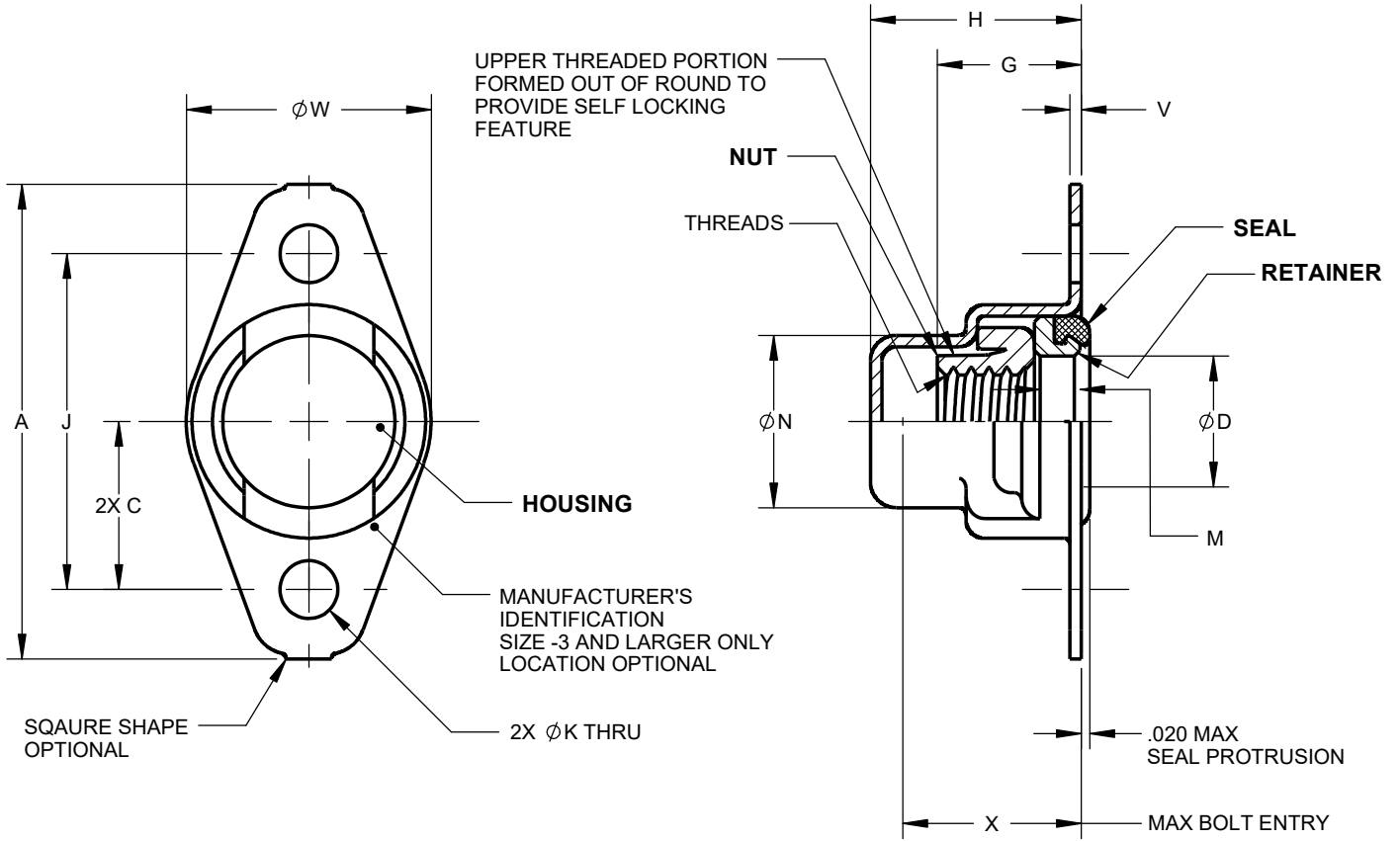


MANUFACTURE OF THE PROPRIETARY PARTS SHOWN HERE WITHOUT WRITTEN CONSENT OF HOWMET FASTENING SYSTEMS IS ABSOLUTELY PROHIBITED.

THIS DRAWING EMBODIES HOWMET FASTENING SYSTEMS CONFIDENTIAL PROPRIETARY DESIGN & ALL DESIGN, MANUFACTURING PRODUCTION, USE & SALE RIGHTS REGARDING SAME ARE EXPRESSLY RESERVED.



HFS PART NO.	THREADS PER AS8879	A	C	ØD	G	H	J	ØK	M	ØN	V	ØW	X	
		MAX		MIN	MAX	MAX			MIN	MAX	MAX	MAX	MAX	
MF1968-(*) MF1968X(*) MF1968X(*)L MF1968-(*)H MF1968-(*)L	04	.1120-40UNJC-3B	.840	.300 .290	.142	.204	.405	.592 .588	.103 .098	.070	.352	.030	.443	.340
	06	.1380-32UNJC-3B			.173	.221								
	08	.1640-32UNJC-3B			.194	.268								
	3	.1900-32UNJF-3B			.220									
	4	.2500-28UNJF-3B	1.000	.381 .371	.280	.350	.560	.754 .750	.105	.419	.635	.490		

© 2020 HOWMET AEROSPACE INC. ALL RIGHTS RESERVED.

THIRD ANGLE PROJECTION

EAR EXPORT CONTROLLED TECHNICAL DATA: DISTRIBUTION LIMITED TO U.S. PERSONS OR THOSE NON-U.S. PERSONS COVERED BY AN APPROPRIATE EXPORT LICENSE OR ALLOWED FOR BY THE APPROPRIATE REGULATIONS, ECCN: EAR99.

APPROVED DATE

18FEB1981

CURRENT DESIGN ACTIVITY:



Howmet Fastening Systems
800 S State College Boulevard
Fullerton, California, 92831

<http://www.hfs.howmet.com>

TITLE:

NUT - ANCHOR, 2 LUG,
SELF SEALING, SELF LOCKING,
MINIATURE, ASSEMBLY

UNLESS OTHERWISE SPECIFIED, DIMENSIONS ARE
IN INCHES & TO ASME Y14.5-2018 TOLERANCES:
DECIMALS = ±.010; ANGLES = ±2°

CAGE CODE: 15653

SALES DRAWING No.

MF1968(*)(*)(*)

SHEET 1 OF 2

FILED AS: s_MF1968-1

MANUFACTURE OF THE PROPRIETARY PARTS SHOWN HERE WITHOUT WRITTEN CONSENT OF HOWMET FASTENING SYSTEMS IS ABSOLUTELY PROHIBITED.

THIS DRAWING EMBODIES HOWMET FASTENING SYSTEMS CONFIDENTIAL PROPRIETARY DESIGN & ALL DESIGN, MANUFACTURING PRODUCTION, USE & SALE RIGHTS REGARDING SAME ARE EXPRESSLY RESERVED.

MATERIAL: MF1968-(*):
 NUT & HOUSING -- NON CORROSION RESISTANT STEEL.
 RETAINER -- 7075-76 ALUMINUM ALLOY.
 SEAL -- RUBBER PER MIL-PRF-6855, CLASS I, DUROMETER A60, COLOR BLACK.

MF1968X(*):
 NUT, HOUSING AND RETAINER -- NON CORROSION RESISTANT STEEL.
 SEAL -- RUBBER PER MIL-PRF-6855, CLASS I, DUROMETER A60, COLOR BLACK.

MF1968-(*):H:
 NUT, HOUSING AND RETAINER -- NON CORROSION RESISTANT STEEL.
 SEAL -- SILICONE RUBBER PER AMS3304 DUROMETER A70 COLOR RED.

MF1968-(*):L AND MF1968X(*):L:
 NUT, HOUSING AND RETAINER -- NON CORROSION RESISTANT STEEL.
 SEAL -- FLUOROSILICONE RUBBER PER MIL-DTL-25988 TYPE II CLASS 1
 DUROMETER A70, COLOR BLUE.

FINISH: NUT:
 MF1968-(*), MF1968-(*):H AND MF1968-(*):L -- CADMIUM PLATE PER AMS-QQ-P-416, TYPE II,
 CLASS 2, PLUS SOLID FILM LUBE.
 MF1968X(*) AND MF1968X(*):L -- CADMIUM PLATE PER AMS-QQ-P-416, TYPE II, CLASS 2.

HOUSING:
 CADMIUM PLATE PER AMS-QQ-P-416, TYPE II, CLASS 2.

RETAINER:
 MF1968-(*) AND MF1968X(*) -- CHEMICAL CONVERSION COATING PER MIL-DTL-5541, TYPE I OR II.
 MF1968-(*):H, MF1968-(*):L AND MF1968X(*):L -- CADMIUM PLATE PER AMS-QQ-P-416, TYPE II, CLASS 2.

SEAL:
 NONE.

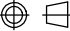
PERFORMANCE: NASM25027, EXCEPT AS FOLLOWS:
 A) TEMPERATURE AS NOTED.


PRESSURE RANGE: INTERNAL AND EXTERNAL PRESSURES FROM 0 TO 50 PSIG.

TEMPERATURE: MF1968-(*) AND MF1968X(*): -65 °F TO +225 °F.
 MF1968-(*):L AND MF1968X(*):L: -65 °F TO +350 °F.
 MF1968-(*):H: -65 °F TO +450 °F.

NOTES: 1. FLOATABILITY: .015 MINIMUM, RADIALLY, FROM CENTERED POSITION.
 .030 MAXIMUM, AXIALLY, FROM CENTERED POSITION.
 2. UNLESS OTHERWISE SPECIFIED:
 A) DIMENSIONS APPLY PRIOR TO LUBE.

© 2020 HOWMET AEROSPACE INC. ALL RIGHTS RESERVED.

THIRD ANGLE PROJECTION  EAR EXPORT CONTROLLED TECHNICAL DATA: DISTRIBUTION LIMITED TO U.S. PERSONS OR THOSE NON-U.S. PERSONS COVERED BY AN APPROPRIATE EXPORT LICENSE OR ALLOWED FOR BY THE APPROPRIATE REGULATIONS, ECCN: EAR99.

APPROVED DATE 18FEB1981	CURRENT DESIGN ACTIVITY:  HOWMET AEROSPACE Howmet Fastening Systems 800 S State College Boulevard Fullerton, California, 92831 http://www.hfs.howmet.com	TITLE: <i>NUT - ANCHOR, 2 LUG, SELF SEALING, SELF LOCKING, MINIATURE, ASSEMBLY</i>
REV. LETTER AND DATE: E 20JUL2022		
CUSTOMER:		

CAGE CODE: 15653

SALES DRAWING No.

MF1968(*)(*)(*)

UNLESS OTHERWISE SPECIFIED, DIMENSIONS ARE
 IN INCHES & TO ASME Y14.5-2018 TOLERANCES:
 DECIMALS = ±.010; ANGLES = ±2°

FILED AS: s_MF1968-()