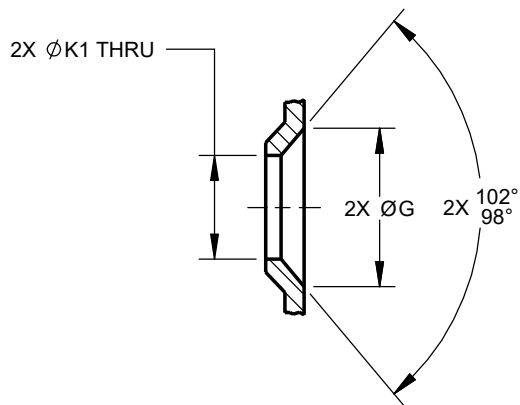
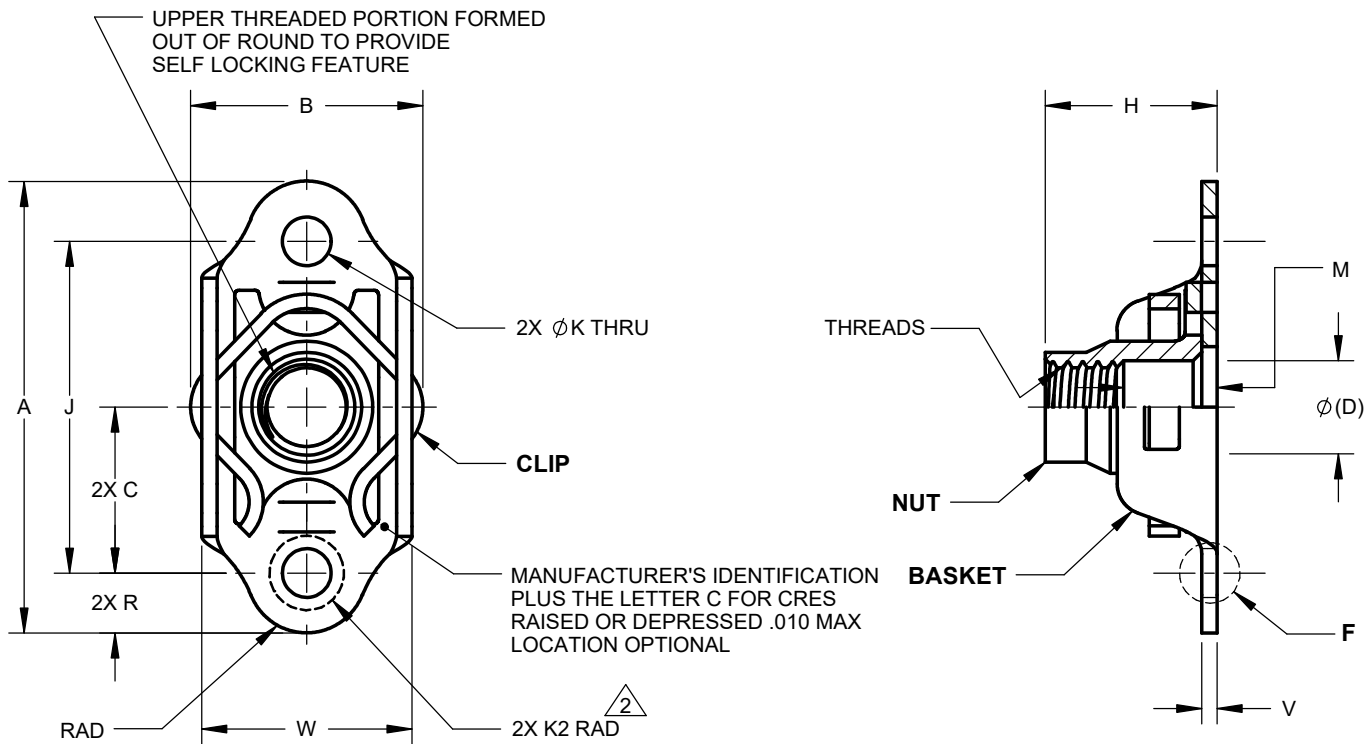
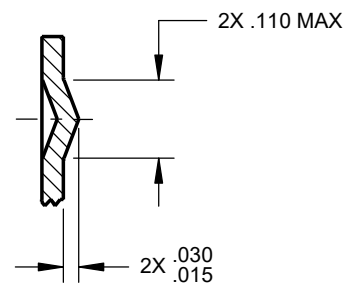


MANUFACTURE OF THE PROPRIETARY PARTS SHOWN HERE WITHOUT WRITTEN  
CONSENT OF HOWMET FASTENING SYSTEMS IS ABSOLUTELY PROHIBITED.THIS DRAWING EMBODIES HOWMET FASTENING SYSTEMS CONFIDENTIAL, PROPRIETARY DESIGN & ALL DESIGN,  
MANUFACTURING PRODUCTION, USE & SALE RIGHTS REGARDING SAME ARE EXPRESSLY RESERVED.

**DETAIL F**  
BOTTOM C'SUNK RIVET HOLES



**DETAIL F**  
PROJECTED WELD NIBS

THIRD ANGLE  
PROJECTIONEAR EXPORT CONTROLLED TECHNICAL DATA: DISTRIBUTION LIMITED TO U.S. PERSONS OR THOSE NON-U.S. PERSONS  
COVERED BY AN APPROPRIATE EXPORT LICENSE OR ALLOWED FOR BY THE APPROPRIATE REGULATIONS, ECCN: EAR99.

APPROVED DATE

28AUG1980

REV. LETTER AND DATE:

D 17JUN2020

CUSTOMER:

CURRENT DESIGN ACTIVITY:



Howmet Fastening Systems  
800 S State College Boulevard  
Fullerton, California, 92831

<http://www.hfs.howmet.com>

TITLE:

NUT - ANCHOR, 2 LUG  
FLOATING, REPLACEABLE,  
SELF LOCKING, ASSEMBLY

UNLESS OTHERWISE SPECIFIED, DIMENSIONS ARE  
IN INCHES & TO ASME Y14.5-2018 TOLERANCES:  
DECIMALS = ±.010; ANGLES = ±2°

CAGE CODE: 15653

SALES DRAWING No.

F50732-(\*)-(\*)

SHEET 1 OF 3

FILED AS:

S\_F50732-(\*)-(\*)

MANUFACTURE OF THE PROPRIETARY PARTS SHOWN HERE WITHOUT WRITTEN  
CONSENT OF HOWMET FASTENING SYSTEMS IS ABSOLUTELY PROHIBITED.THIS DRAWING EMBODIES HOWMET FASTENING SYSTEMS CONFIDENTIAL, PROPRIETARY DESIGN & ALL DESIGN,  
MANUFACTURING PRODUCTION, USE & SALE RIGHTS REGARDING SAME ARE EXPRESSLY RESERVED.

FILED AS:

S\_F50732-(-)(-)

2

HFS PART NO.		THREADS PER AS8879	A MAX	B MAX	C	Ø(D)	ØG	H MAX	J	ØK	ØK1	K2 MIN	M MIN	R MIN	V	W MAX	MAXIMUM WEIGHT lbs/100											
F50732-	08-1	.1640-32UNJC-3B	.948	.484	.349 .339	.168	.210 .190	.250	.690 .686	.103 .098	.113 .098	.098	.070	.100	.037 .027	.445	.57											
	08-2							.312					.125				.64											
	08-3							.375					.188				.69											
	08-4							.438					.250				.74											
	08-5							.500					.313				.79											
	08-6							.562					.375				.84											
	3-1	.1900-32UNJF-3B				1.292		.720					.505 .495				.194	.240 .220	.250	1.002 .998	.135 .130	.145 .130	.130	.070	.125	.045 .035	.643	.57
	3-2																		.312					.125				.64
	3-3																		.375					.188				.69
	3-4																		.438					.250				.74
	3-5																		.500					.313				.79
	3-6																		.562					.375				.84
	4-1	.2500-28UNJF-3B	.584	.254	.295		.344		.135 .130	.145 .130	.130	.070		.125	.045 .035	.547	1.07											
	4-2																.357		.125					1.17				
	4-3																.419		.188					1.26				
	4-4																.481		.250					1.34				
	4-5																.543		.313					1.44				
	4-6																.605		.375					1.52				
	5-1	.3125-24UNJF-3B				.840		.379					.240 .220				.344	.135 .130	.145 .130	.130	.070	.125	.055 .045	.760	1.82			
	5-2																								.400	.125	1.87	
	5-3																								.461	.188	2.00	
	5-4																								.524	.250	2.11	
	5-5																								.586	.313	2.22	
	5-6																								.649	.375	2.33	
	6-1	.3750-24UNJF-3B	.379	.240 .220	.380		.070		.135 .130	.145 .130	.130	.125		.055 .045	.760	2.40												
	6-2															.430	.125				2.55							
	6-3															.500	.188				2.80							
	6-4															.560	.250				2.95							
	6-5															.635	.313				3.10							
	6-6															.690	.375				3.25							

HFS PART NO.	AXIAL TENSILE STRENGTH lbf MIN	PUSH OUT lbf MIN	SEATING TORQUE in-lbf	TORQUE OUT in-lbf
F50732-	08-(* )	2,000	80	45
	3-(* )	2,825	200	90
	4-(* )	5,060	225	160
	5-(* )	8,000	250	280
	6-(* )	11,900	125	240

THIRD ANGLE  
PROJECTIONEAR EXPORT CONTROLLED TECHNICAL DATA: DISTRIBUTION LIMITED TO U.S. PERSONS OR THOSE NON-U.S. PERSONS  
COVERED BY AN APPROPRIATE EXPORT LICENSE OR ALLOWED FOR BY THE APPROPRIATE REGULATIONS, ECCN: EAR99.

APPROVED DATE

28AUG1980

REV. LETTER AND DATE:

D 17JUN2020

CUSTOMER:

CURRENT DESIGN ACTIVITY:

Howmet Fastening Systems  
800 S State College Boulevard  
Fullerton, California, 92831<http://www.hfs.howmet.com>

TITLE:

NUT - ANCHOR, 2 LUG  
FLOATING, REPLACEABLE,  
SELF LOCKING, ASSEMBLYUNLESS OTHERWISE SPECIFIED, DIMENSIONS ARE  
IN INCHES & TO ASME Y14.5-2018 TOLERANCES:  
DECIMALS = ±.010; ANGLES = ±2°

CAGE CODE: 15653

SALES DRAWING No.

F50732-(\* )-(\* )

SHEET 2 OF 3

MANUFACTURE OF THE PROPRIETARY PARTS SHOWN HERE WITHOUT WRITTEN  
CONSENT OF HOWMET FASTENING SYSTEMS IS ABSOLUTELY PROHIBITED.THIS DRAWING EMBODIES HOWMET FASTENING SYSTEMS CONFIDENTIAL, PROPRIETARY DESIGN & ALL DESIGN,  
MANUFACTURING PRODUCTION, USE & SALE RIGHTS REGARDING SAME ARE EXPRESSLY RESERVED.

FILED AS:

MATERIAL: NUT:  
A286 CORROSION RESISTANT STEEL PER AMS5525, AMS5732, OR AMS5737 (UNS S66286).

BASKET:  
A286 CORROSION RESISTANT STEEL PER AMS5525 (UNS S66286).

CLIP:  
XM-28 STAINLESS STEEL SPRING WIRE PER ASTM A313 (UNS S24100).

FINISH: NUT:  
F50732-(\*)(\*) -- PASSIVATE PER AMS2700, METHOD 1, PLUS SOLID FILM LUBE PER NAS3356.

F50732-(\*)(\*)S(\*) -- SILVER PLATE PER AMS2410 WITH .0002 MINIMUM THICKNESS ON ANY  
SURFACE WHICH CAN BE TOUCHED WITH Ø.75 BALL. THREADS SHALL  
SHOW COMPLETE COVERAGE, BUT THICKNESS REQUIREMENT IS WAIVED.

BASKET:  
PASSIVATE PER AMS2700, METHOD 1.

CLIP:  
PASSIVATE PER AMS2700, METHOD 1, TYPE 6.

PERFORMANCE: NASM25027, EXCEPT AS FOLLOWS:

A) AXIAL TENSILE STRENGTH AS TABULATED.

B) F50732-(\*)(\*) REUSABILITY OF 50 CYCLES USING A286 OR 13-8 Mo BOLTS SEATED TO  
SEATING TORQUE VALUES AS TABULATED.

C) PUSH OUT AND TORQUE OUT VALUES AS TABULATED WHEN APPLIED SEPARATELY  
AND COMBINED.

VARIATIONS: ADD BC FOR BOTTOM C'SUNK RIVET HOLES.  
EXAMPLE: F50732-3-4BC

ADD P FOR PROJECTED WELD NIBS.  
EXAMPLE: F50732-3-4P

NOTES: 1. FLOATABILITY: .030 RADIALLY MINIMUM, FROM CENTERED POSITION.

2. K2 IS CLEARANCE FOR ATTACHING RIVETS.

3. UNLESS OTHERWISE SPECIFIED:  
A) DIMENSIONS APPLY PRIOR TO LUBE.

THIRD ANGLE  
PROJECTION

EAR EXPORT CONTROLLED TECHNICAL DATA: DISTRIBUTION LIMITED TO U.S. PERSONS OR THOSE NON-U.S. PERSONS  
COVERED BY AN APPROPRIATE EXPORT LICENSE OR ALLOWED FOR BY THE APPROPRIATE REGULATIONS, ECCN: EAR99.

APPROVED DATE

28AUG1980

CURRENT DESIGN ACTIVITY:



Howmet Fastening Systems  
800 S State College Boulevard  
Fullerton, California, 92831

<http://www.hfs.howmet.com>

TITLE:

NUT - ANCHOR, 2 LUG  
FLOATING, REPLACEABLE,  
SELF LOCKING, ASSEMBLY

UNLESS OTHERWISE SPECIFIED, DIMENSIONS ARE  
IN INCHES & TO ASME Y14.5-2018 TOLERANCES:  
DECIMALS = ±.010; ANGLES = ±2°

CAGE CODE: 15653

SALES DRAWING No.

F50732-(\*)(\*)

SHEET 3 OF 3

S\_F50732-(-)(-)