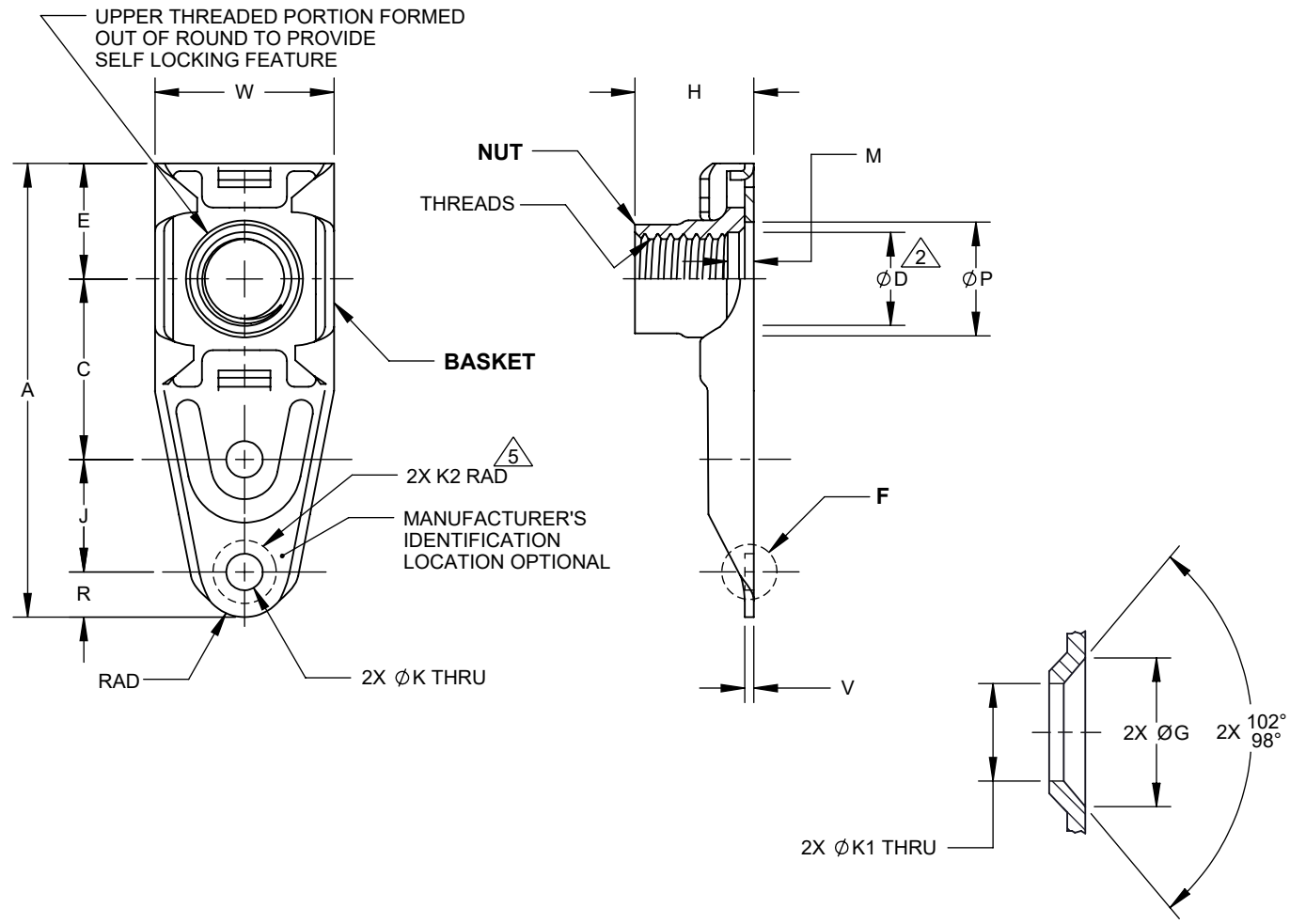


MANUFACTURE OF THE PROPRIETARY PARTS SHOWN HERE WITHOUT WRITTEN CONSENT OF HOWMET FASTENING SYSTEMS IS ABSOLUTELY PROHIBITED.

THIS DRAWING EMBODIES HOWMET FASTENING SYSTEMS CONFIDENTIAL, PROPRIETARY DESIGN & ALL DESIGN, MANUFACTURING PRODUCTION, USE & SALE RIGHTS REGARDING SAME ARE EXPRESSLY RESERVED.



**DETAIL F**  
BOTTOM C'SUNK RIVET HOLES

HFS PART NO.	THREADS PER AS8879	A MAX	C	ØD MIN	E MAX	ØG	H MAX	J	ØK	ØK1	K2 MIN	M MIN	ØP	R	V MAX	W	MAXIMUM WEIGHT lbs/100
F2000-	04	.1120-40UNJC-3B	1.051	.349 .339	.116 .142 .168 .194	.275	.210 .190	.250	.314 .310	.103 .098	.113 .098	.098	.270 .172 .270 .198 .270 .224 .270 .250	.130 .100	.032	.422 .290	.52
	06	.1380-32UNJC-3B															.53
	08	.1640-32UNJC-3B															.54
	3	.1900-32UNJF-3B															.56
	420	.2500-20UNJC-3B	1.306	.505 .495	.254	.364	.281	.392 .372	.141 .125	.045	.641 .412	.93					
	4	.2500-28UNJF-3B										.703 .656					
	5	.3125-24UNJF-3B	1.396	.630 .620	.504	.440 .485	.328 .479	.240 .220	.502 .498	.166 .161	.176 .161	.161	.550 .500	.075	.859 .796	1.44	
	6	.3750-24UNJF-3B	1.422													1.44	
	8	.5000-20UNJF-3B	1.800													----	.595

THIRD ANGLE PROJECTION		EAR EXPORT CONTROLLED TECHNICAL DATA: DISTRIBUTION LIMITED TO U.S. PERSONS OR THOSE NON-U.S. PERSONS COVERED BY AN APPROPRIATE EXPORT LICENSE OR ALLOWED FOR BY THE APPROPRIATE REGULATIONS, ECCN: EAR99.		
APPROVED DATE	CURRENT DESIGN ACTIVITY:	TITLE:	CAGE CODE: 15653	
05MAY1987	<b>HOWMET AEROSPACE</b> Howmet Fastening Systems 800 S State College Boulevard Fullerton, California, 92831 <a href="http://www.hfs.howmet.com">http://www.hfs.howmet.com</a>	NUT - ANCHOR, 1 LUG, FLOATING, SELF LOCKING, ASSEMBLY	SALES DRAWING No.	
REV. LETTER AND DATE:			UNLESS OTHERWISE SPECIFIED, DIMENSIONS ARE IN INCHES & TO ASME Y14.5-2018 TOLERANCES: DECIMALS = ±.015; ANGLES = ±2°	<b>F2000-(* )</b>
D 06APR2020				SHEET 1 OF 2
CUSTOMER:				

FILED AS: s\_F2000-()

MANUFACTURE OF THE PROPRIETARY PARTS SHOWN HERE WITHOUT WRITTEN CONSENT OF HOWMET FASTENING SYSTEMS IS ABSOLUTELY PROHIBITED.

THIS DRAWING EMBODIES HOWMET FASTENING SYSTEMS CONFIDENTIAL, PROPRIETARY DESIGN & ALL DESIGN, MANUFACTURING PRODUCTION, USE & SALE RIGHTS REGARDING SAME ARE EXPRESSLY RESERVED.

**MATERIAL:** NUT AND BASKET:  
C1050 CARBON STEEL PER AMS5085 (UNS G10500).

**HEAT TREAT:** NUT AND BASKET -- HRc 49 MAX.

**FINISH:** F2000-(\*):  
NUT AND BASKET -- CADMIUM PLATE PER AMS-QQ-P-416, TYPE II, CLASS 2, PLUS SOLID FILM LUBE PER AS5272, TYPE I.  
F2000-(\*):CW:  
NUT AND BASKET -- CADMIUM PLATE PER AMS-QQ-P-416, TYPE II, CLASS 2, PLUS WAX.  
F2000X(\*):  
NUT AND BASKET -- CADMIUM PLATE PER AMS-QQ-P-416, TYPE II, CLASS 2.

**PERFORMANCE:** NASM25027.

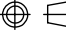

**TEMPERATURE:** 450 °F MAX.

**VARIATION:** ADD BC FOR BOTTOM C'SUNK RIVET HOLES.  
EXAMPLE: F2000-4BCCW.

**NOTES:**

1. FLOATABILITY: .030 MINIMUM, RADIALY, FROM CENTERED POSITION.  
.020 MAXIMUM, AXIALLY.  
.030-.040 LATERALLY AND LONGITUDINALLY  
FROM CENTERED POSITION.
2. FOR SIZES -.06 AND SMALLER, COUNTERSINK OR RADIUS WITHIN ØD.
3. SURFACE TEXTURE 125 MICROINCHES PER ASME B46.1.
4. REMOVE ALL BURRS AND SHARP EDGES.
5. K2 IS CLEARANCE FOR ATTACHING RIVET HOLES.
6. UNLESS OTHERWISE SPECIFIED:  
A) DIMENSIONS APPLY AFTER PLATING, BUT BEFORE LUBRICANT COAT.

FILED AS: s\_F2000-()

THIRD ANGLE PROJECTION 		EAR EXPORT CONTROLLED TECHNICAL DATA: DISTRIBUTION LIMITED TO U.S. PERSONS OR THOSE NON-U.S. PERSONS COVERED BY AN APPROPRIATE EXPORT LICENSE OR ALLOWED FOR BY THE APPROPRIATE REGULATIONS, ECCN: EAR99.	
APPROVED DATE <b>05MAY1987</b>	CURRENT DESIGN ACTIVITY:  <b>HOWMET AEROSPACE</b>	TITLE: <i>NUT - ANCHOR, 1 LUG, FLOATING, SELF LOCKING, ASSEMBLY</i>	<b>CAGE CODE: 15653</b>
REV. LETTER AND DATE: <b>D 06APR2020</b>	Howmet Fastening Systems 800 S State College Boulevard Fullerton, California, 92831	UNLESS OTHERWISE SPECIFIED, DIMENSIONS ARE IN INCHES & TO ASME Y14.5-2018 TOLERANCES: DECIMALS = ±.015; ANGLES = ±2°	<b>SALES DRAWING No.</b>
CUSTOMER:	<a href="http://www.hfs.howmet.com">http://www.hfs.howmet.com</a>		<b>F2000-(*)</b>
			<b>SHEET 2 OF 2</b>