



Reference Only

REPUBLIC FASTENER MANUFACTURING CORPORATION
 1300 RANCHO CONEJO BOULEVARD, NEWBURY PARK, CALIFORNIA 91320 (805) 498-6621

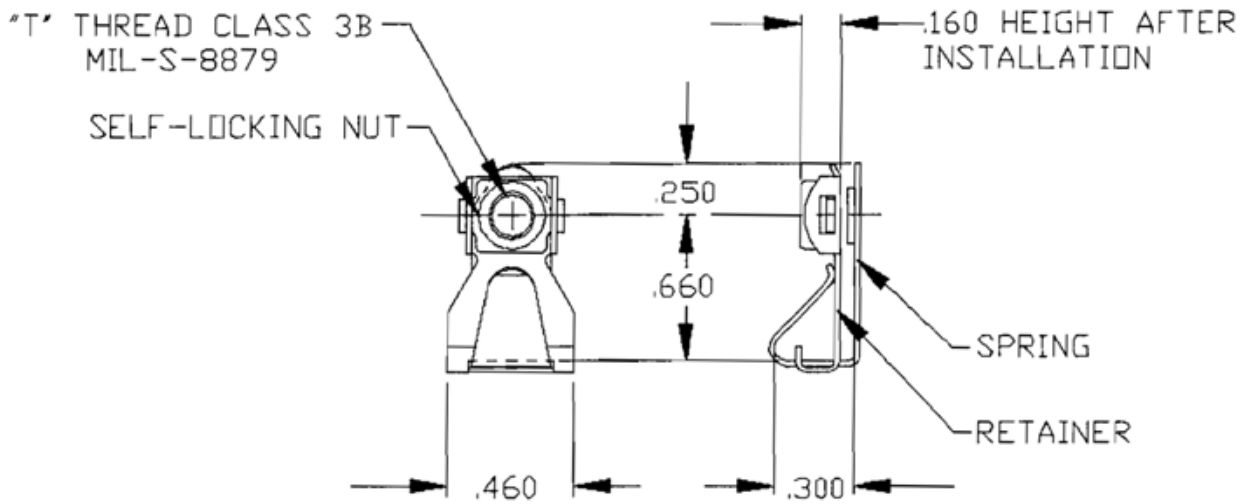


TABLE 1

FIRST DASH NUMBER	T THREAD	PANEL THICKNESS RANGE	EDGE DISTANCE RANGE	INSTALL HOLE SIZE	APPROX. WEIGHT LB/100
-06	.1380-32 UNJC-3B	.020-.125	.50-.62	.190-.229	.56
-08	.1640-32 UNJC-3B	.020-.125	.50-.62	.190-.229	.57
-3	.1900-32 UNJF-3B	.020-.125	.50-.62	.218-.261	.58

MATERIAL:

NUT, SPRING AND RETAINER___CARBON STEEL, 1050 PER AMS5085, HEAT TREATED.

SURFACE TREATMENT:

SPRING AND RETAINER_____CADMIUM PLATE PER QQ-P-416 TYPE II, CLASS 1.
 NUT_____CADMIUM PLATE PER QQ-P-416 TYPE II, CLASS 2,
 MOLYBDENUM DISULFIDE DRY FILM LUBRICANT PER MIL-L-46010

NUT ELEMENT CONFORMS TO MIL-N-25027

EXAMPLE OF PART NUMBER WITH EXPLANATION OF CODING:

SL214-08-1 SP()

- DE-NOTES SPECIAL OPTIONS (CONTACT MANUFACTURER)
- PANEL THICKNESS (SEE TABLE 1)
- THREAD SIZE (SEE TABLE 1)
- BASIC PART NUMBER

TOLERANCES UNLESS OTHERWISE NOTED:
 DECIMALS: XX ±.020
 XXX ±.010
 ANGULAR: ±0°30'

APPROVED BY: UPP	TITLE	SALES DRAWING NO:
	CLIP NUT, SELF-LOCKING	SL214 SERIES
	5/8" EDGE DISTANCE	
REV. C DATE: 9-9-93		CAGE 52828