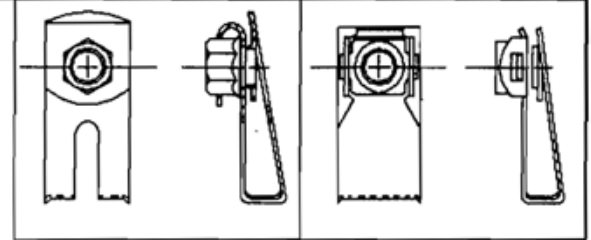
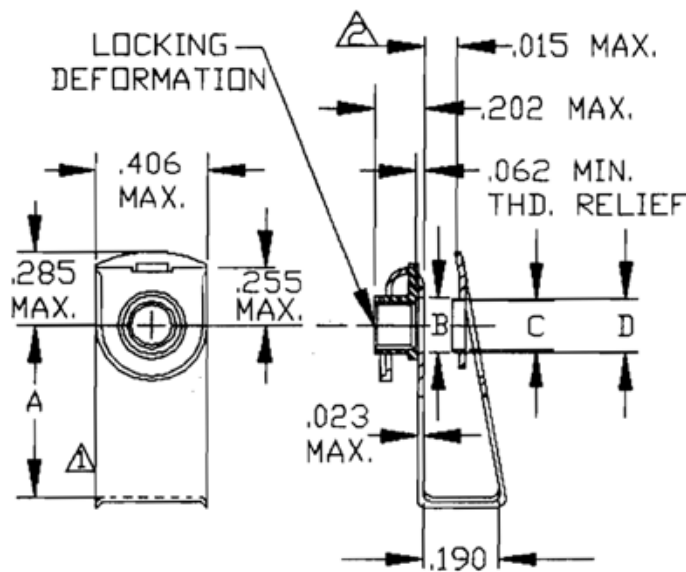




Reference Only

REPUBLIC FASTENER MANUFACTURING CORPORATION

1300 RANCHO CONEJO BOULEVARD, NEWBURY PARK, CALIFORNIA 91320 (805) 498-6621



OPTIONAL DESIGN CONFIGURATIONS

RFM PART NUMBER RC500	THREAD SIZE MIL-S-8879	A		B DIA. MIN.	C DIA. MIN.	D DIA. MAX.	PANEL THICKNESS RANGE	NOMINAL EDGE MARGIN	RECOMMENDED INSTALLATION HOLE DIA.	APPROX. WEIGHT LB/100
-8-08	.1640-32	.530	.510	.192	.168	.191	.020-.160	.500	.192-.202	.46
-10-08	UNJC-3B	.675	.655	.192	.168	.191	.020-.160	.625	.192-.202	.51
-8-3	.1900-32 UNJF-3B	.530	.510	.219	.193	.218	.020-.160	.500	.219-.229	.47
-10-3		.675	.655	.219	.193	.218	.020-.160	.625	.219-.229	.52
-10G-3		.675	.655	.219	.193	.218	.020-.160	.625	.219-.229	.52
-8G-3		.530	.510	.219	.193	.218	.020-.160	.500	.219-.229	.47

MATERIAL: CLIP - 1050 STEEL PER AMS5085
NUT - 1050 STEEL PER AMS5085 OR 4037 PER AMS6300

HEAT TREAT: CLIP - HARDENED PER MIL-H-6875 EXCEPT AUSTEMPERED, 48-51 HRC.
NUT - TO MEET PERFORMANCE REQUIREMENTS OF MIL-N-25027, 46 MAX. HRC.

FINISH: CLIP - CADMIUM PLATE, QQ-P-416, TYPE II, CLASS 1.
NUT - CADMIUM PLATE, QQ-P-416, TYPE II, CLASS 2.

LUBRICATION: NUT - SOLID FILM LUBRICANT PER MIL-L-46010, TYPE I MEETING THE REQUIREMENTS OF MIL-N-25027.

THREADS: MIL-S-8879 (PRIOR TO ADDITION OF DRY FILM LUBRICANT).

PERFORMANCE: NUT ELEMENT CONFORMS TO MIL-N-25027

NOTES:

- ⚠ THIS REPRESENTATION OF THE CLIP IS FOR ILLUSTRATION PURPOSES ONLY AND IS NOT INTENDED TO RESTRICT DESIGNS AND SHAPES WHICH WILL OTHERWISE CONFORM TO SPECIFICATION REQUIREMENTS AND ARE WITHIN THE ENVELOPE DIMENSIONS.
- ⚠ CLIP OPENING MUST BE SHAPED SO AS TO FACILITATE EASY INSTALLATION ON THE RESPECTIVE RANGE OF PANEL THICKNESS LISTED IN ABOVE TABLE.
- ⚠ WHEN INSTALLED IN THE RECOMMENDED INSTALLATION HOLE, THE CLIP WILL FLOAT APPROX. .011 ADDITIONAL RADIAL FLOAT CAN BE OBTAINED BY USING LARGER HOLE SIZES. THESE PARTS ARE DESIGNED FOR A MAXIMUM INSTALLATION HOLE DIA. .032 OVER THE MAXIMUM RECOMMENDED VALUE.

DIMENSIONS IN INCHES; TOLERANCE UNLESS OTHERWISE SPECIFIED: .XX ±.03, .XXX ±.010, ANGLES ±1/2°

APPROVED BY: UPP	TITLE NUT CLIP-ON, SELF-LOCKING, STEEL, 450°F.	SALES DRAWING NO: RC500
REV. A DATE: 8-31-93		CAGE 52828