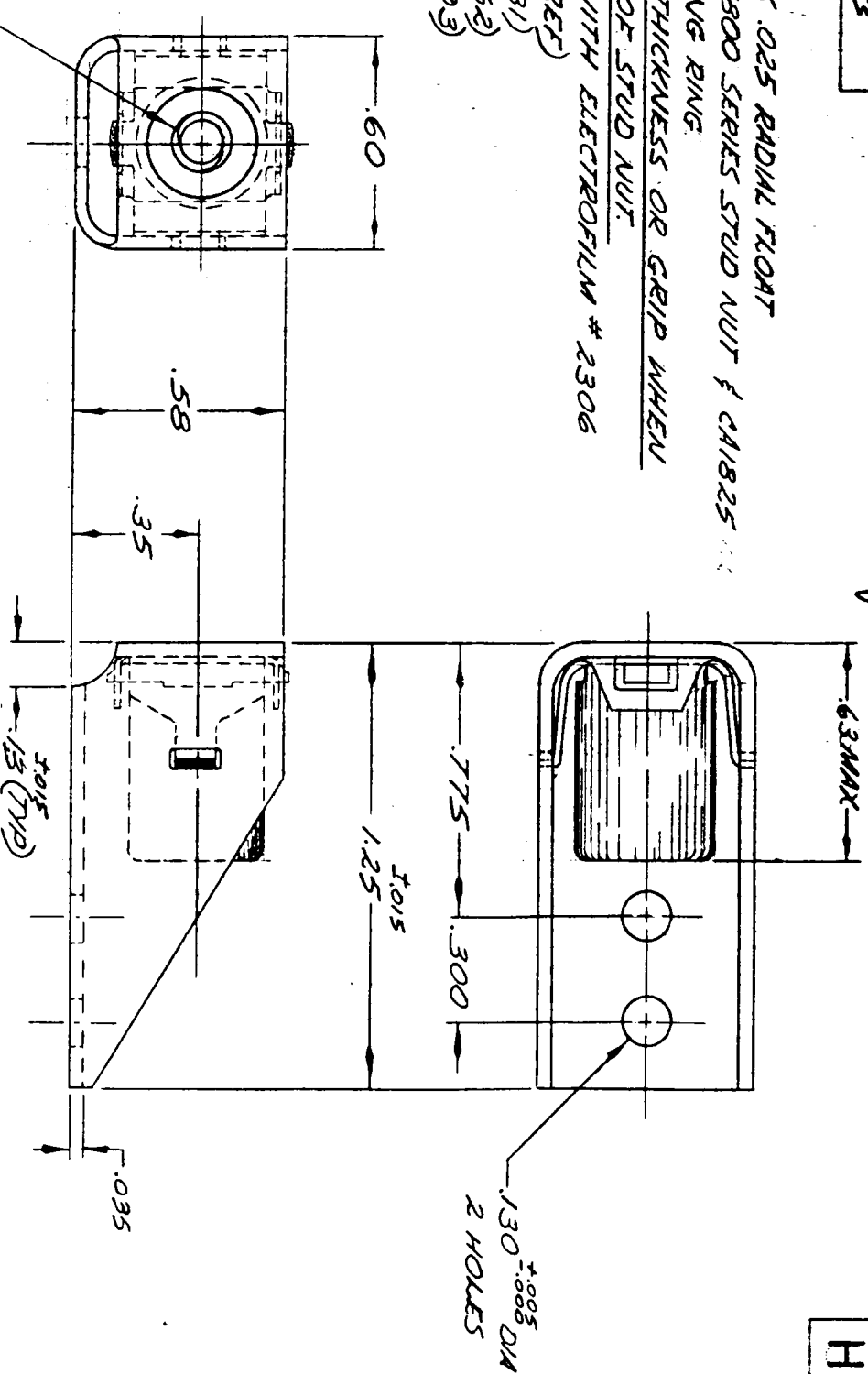


DATE	REV	CHANGE	3-5-74	G	Added: .035 UNDERLINED	NOTE 3
11/17/70	E	REDRAWN	10/19/83	H	ECO 11041 JS.	7mg
12/11/70	F	Corrected Tolerances				

**NOTES:**

1. RECEPTACLE ASSY HAS .025 RADIAL FLOAT
2. TO BE USED WITH CA1800 SERIES STUD NUT & CA1825 OR CA1826-1 RETAINING RING
3. ADD .035 TO PANEL THICKNESS OR GRIP WHEN SELECTING LENGTH OF STUD NUT.
4. SCREEN LUBRICATED WITH ELECTROFILM # 2306
5. SHIMS AVAILABLE: (REF)  
CA1880-1 (t = .031)  
CA1880-2 (t = .062)  
CA1880-3 (t = .093)



DRAWING PROVIDES FORM, FIT AND FUNCTION DATA. DO NOT ATTEMPT TO MANUFACTURE PRODUCT USING THIS DRAWING.

UNLESS OTHERWISE SPECIFIED

TOLERANCES:	FINISH:	HEAT TREAT:
DECIMALS: XX ±.010	BARREL & CHGE: PASSIVATED	SCREEN ONLY: 140 KSI MIN
XXX +.005	PER QQ-P-35	PER MIL-H-6875
ANGLES: /°	SCREEN: SEE NOTE 4.	

FEDERAL SUPPLY	WEIGHT:	SCALE:
CODE 29372	~	2:1

ENGIN	ENGIN	MATERIAL OR NAME	SPECIFICATION
BARREL	300 SERIES CRES		ASTM-A-582/AMS 5640
SCREEN	A 286 CRES		AMS 5731-AMS 5737
CHGE	17-7PH CRES		AMS 5528

RECEPTACLE ASSY  
— RIGHT ANGLE MOUNTED —

**TRIDAIR INDUSTRIES**  
FASTENER DIVISION  
MFRS. OF NEWTON INSERTS AND CALFAX FASTENERS  
8000 W. LOMITA BLVD., TORRANCE, CALIFORNIA 90506, PHONES 213-778-7151

SHEET 1 OF 1  
**CA1879**

CA1879

REC. CHECKID 1C

H