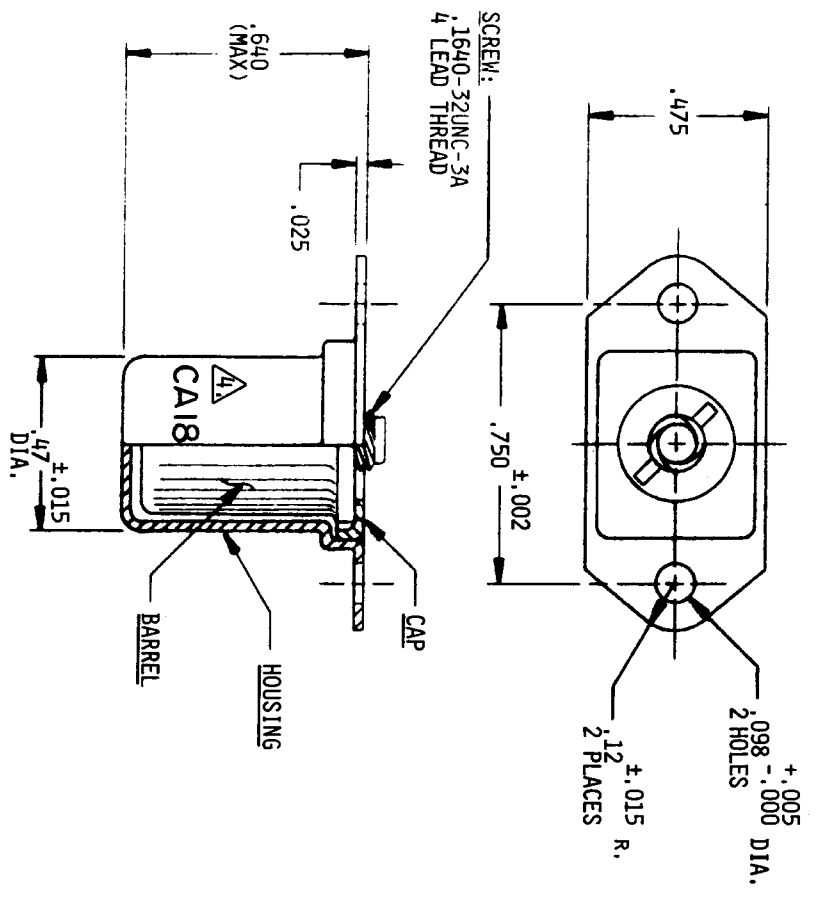


DATE	REV	CHANGE
8734 C	ECD	13/14 D.S.
		23.



NOTES: UNLESS OTHERWISE SPECIFIED

- △ MATERIAL AND SPECIFICATIONS:
- 1.1 BARREL: 300 SERIES CRES PER ASTM-A-581/ASTM-A-582/AMS5640.
 - 1.2 CAP: 300 SERIES CRES PER MIL-S-5059.
 - 1.3 HOUSING: 300 SERIES CRES PER QQ-S-763/MIL-S-5059.
 - 1.4 SCREW: A-286 CRES PER AMS5731-AMS5737.
 - 2. RECEPTACLE FLOAT: .020 RADIIALLY FROM CENTER.
 - 3. USE WITH ANY CA1800 OR CA18000 SERIES 4 LEAD STUD NUT, CA18193 PART NUMBER STAMPED AS SHOWN .09 HIGH.

REPRODUCTION OF THIS DRAWING OR MANUFACTURE OF THE COMPONENT PARTS SHOWN HEREIN BY ANY OTHER METHOD THAN THAT AUTHORIZED BY THE ORIGINAL DRAWING IS PROHIBITED. THIS DRAWING IS THE PROPERTY OF TRIDAIR AND ALL RIGHTS ARE RESERVED. ANY REPRODUCTION OR USE AND ALL RIGHTS ARE RESERVED. THE EXPRESSES

CA18193

C

UNLESS OTHERWISE SPECIFIED

FINISH	HEAT TREAT
PASSIVATED PER QQ-P-35	SCREW: 140 KSI (MIN) PER MIL-H-6875
WEIGHT .012 LBS/EA, APPROX	SCALE
TOLERANCES DECIMALS .001 .002 .005	MILLIMETERS .075 .150 .300
ANNEALS	STAMPING

DATE BY	APPROV	MATERIAL OR NAME
R.K.Y.	R.K.Y.	RECEPTACLE ASSY ENCAPSULATED
10-16-74		



a Tenneco Company
3000 W. Loring Blvd
Fort Worth, TX 76103
(817) 330-6777

CA18193

Spec. reviewed by