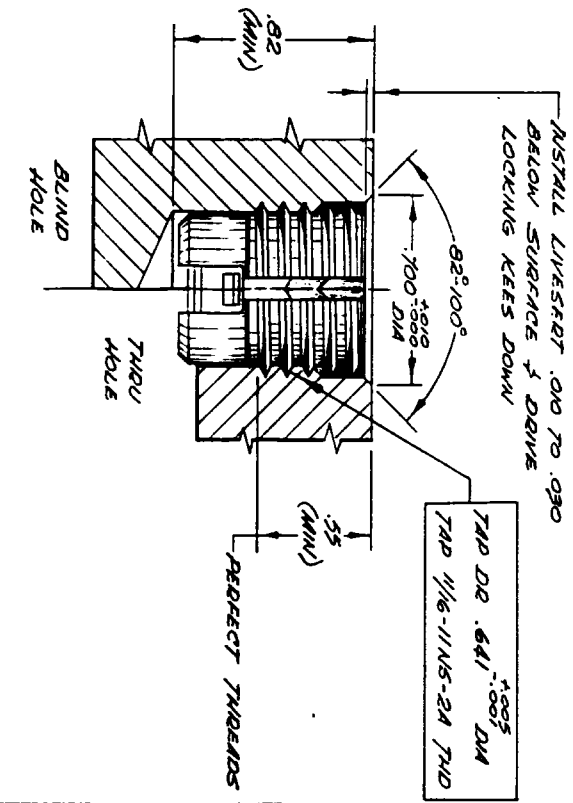
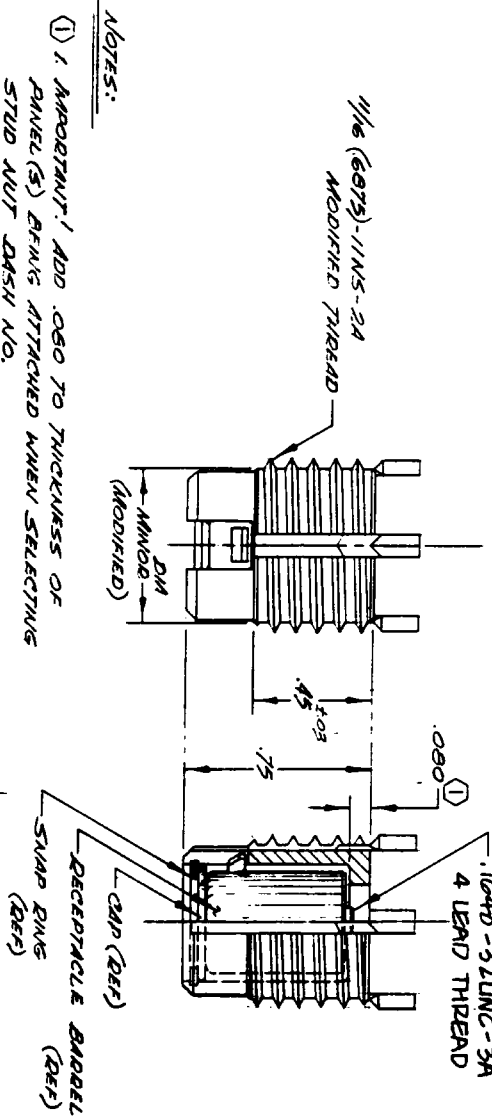


DRAWING PROVIDES FORM, FIT AND FUNCTION DATA. DO NOT ATTEMPT TO MANUFACTURE PRODUCT USING THIS DRAWING.

INSTALLATION DATA



- NOTES:
1. IMPORTANT! ADD .080 TO THICKNESS OF PANEL (S) BEING ATTACHED WHEN SELECTING STUD NUT DASH NO.
 2. FLOAT: RECEPTACLE FLOATS .085 RADIALLY FROM CENTER WITHIN INSERT.
 3. TO BE USED WITH CA1800 OR CA1800 SERIES STUD NUTS
 4. INSTALL WITH CA1802-T10 INSTALLATION TOOL
 5. FINISH:
 - A. COBS: PASSWITED/QD-P-35
 - B. SCREW: CAD PLATED/QD-P-46, TYPE II, CL 2
 - C. ALUM: ANODIZED/MIL-A-8625, TYPE II, CL 2
 - D. CAP: PARKERIZED

UNLESS OTHERWISE SPECIFIED	
FINISH	SEE NOTE 5
ANODES	XX 1 015 XXX 4 010
FEDERAL SUPPLY	CODE 28372
HEAT TREAT	GAREN ONLY! 160 K.51. MIN. PER MIL-H-6875
SCALE	2/1

THREADS PER INCH	309 COBS	P01M-A-581/AN6 5640
RECEPTACLE BARREL	7075-175 ALUM	00-4-225/9
RECEPTACLE SCREW	6740 STEEL	AMS 6332
CAP	CARBON STEEL	P01M-A-740/00-5-684
SNAP RING	PV-5-T40	AMS 5530
FINISH	SEE NOTE 5	
ANODES	XX 1 015 XXX 4 010	
FEDERAL SUPPLY	CODE 28372	
HEAT TREAT	GAREN ONLY! 160 K.51. MIN. PER MIL-H-6875	
SCALE	2/1	
LIVESERT, FLOATING		
8-32UNC-3B, 4 LEAD		
TRIDRIP INDUSTRIES		
FASTENER DIVISION		
3800 W. LOMITA BLVD., CORONA, CALIF. 92626		
TELEPHONE: 714/970-2700		
SHEET	1	OF 1

REV 0479D T2