

MANUFACTURE OF THE PROPRIETARY PARTS SHOWN HERE WITHOUT WRITTEN CONSENT OF ARCONIC FASTENING SYSTEMS AND RINGS IS ABSOLUTELY PROHIBITED.

THIS DRAWING EMBODIES A CONFIDENTIAL, PROPRIETARY DESIGN & ALL DESIGN, MANUFACTURING PRODUCTION, USE & SALE RIGHTS REGARDING SAME ARE EXPRESSLY RESERVED.

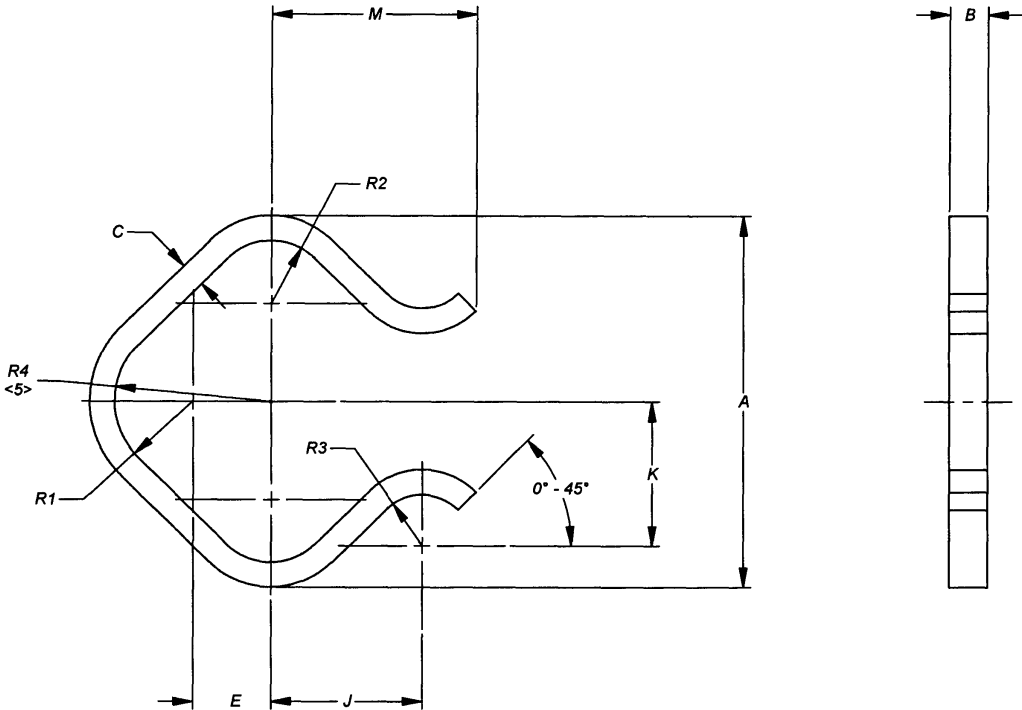



TABLE 1

PART NUMBER <6>	A ±.015 <4>	B ±.005	C ±.005	E ±.005	J ±.010	K ±.005	M REF	R1 ±.010	R2 ±.010	R3 ±.010	R4 ±.010 <5>	MAXIMUM WEIGHT LBS/100
FBL10059-3R	.474	.050	.032	.100	.194	.184	.280	.100	.080	.065	.171	.067
FBL10059-4R	.574	.062	.032	.110	.253	.210	.330	.140	.090	.062	.215	.089
FBL10059-5R	.710	.062	.032	.125	.286	.215	.373	.156	.055	.055	—	.113
FBL10059-6R	.800	.062	.042	.125	.340	.274	.420	.210	.055	.055	—	.139
FBL10059-8R	.960	.072	.042	.150	.380	.285	.510	.230	.090	.085	—	—

NOTES; UNLESS OTHERWISE SPECIFIED:

1. MATERIAL:
1.1 ARMCO 18-2MN CRES OR 302 CRES PER AMS5688, CONDITION COLD ROLLED, OR XM-28 PER CHEMISTRY ASTM A313.
2. FINISH:
2.1 PASSIVATED PER AMS2700.
3. ALL DIMENSIONS ARE IN INCHES AND ARE TYPICAL ABOUT THE CENTERLINE OF THE PART.
- <4> "A" DIMENSIONS MAY EXCEED PLUS TOLERANCE BY .010, PROVIDING CLIP MEETS ALL DIMENSIONS WHEN HELD COMPRESSED TO "A" DIMENSIONS ±.015.
- <5> "R4" OPTIONAL FOR -3R AND -4R IN LIEU TO "R1" AND "E".
- <6> DASH NUMBER DESIGNATES THE THREAD SIZE IF THE CORRESPONDING NUT PLATE ASSEMBLY IN 16th OF AN INCH.
7. MAGNETIC PERMEABILITY 2.0 MAXIMUM (AIR = 1.0) FOR A FIELD STRENGTH OF H = 200 OERSTEDS.
8. THIS RETAINING CLIP IS INTENDED FOR USE WITH FBL10040-()-() AND FBL10043-()-() NUT PLATE ASSEMBLIES.

S42040	APPROVED DATE 22 DEC 88	<div>CURRENT DESIGN ACTIVITY:</div> <div> ARCONIC Fastening Systems and Rings</div>	TITLE: RETAINING CLIP	<div>CURRENT DESIGN ACTIVITY:</div> <div>CAGE CODE: 29372</div> <div>SALES DRAWING NO.</div> <div>FBL10059-()R</div> <div>SHEET 1 OF 1</div>
	REV. LETTER AND DATE E 24 OCT 18			
	DAF NUMBER DAF 117498			

TRIDAIR PRODUCTS
3000 W. LOMITA BLVD.
TORRANCE, CA. 90505

UNLESS OTHERWISE SPECIFIED
DIMENSIONS ARE IN INCHES &
ASME Y14.6M TOLERANCES:

ANGLES
DECIMALS

= ±3°
= ±.02
= ±.010