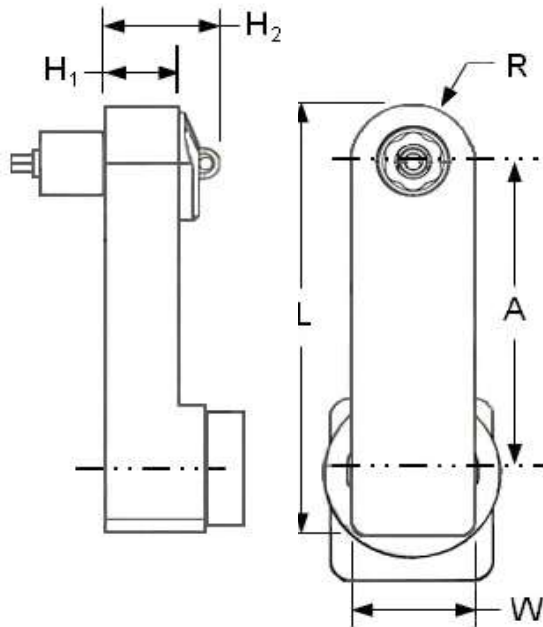


# Offset Pistol Grip Tools



Torque Max: 210 in-lbs



RPM: 220  
Sound level : 78dB(A)

| Model Number   | No. of Gears | A                  | H <sub>1</sub>   | H <sub>2</sub><br>(With Hex Key) | L                  | W                | R                |
|----------------|--------------|--------------------|------------------|----------------------------------|--------------------|------------------|------------------|
| <b>CTL1436</b> | 7            | 5.13"<br>[130.3mm] | .68"<br>[17.3mm] | 1.0"<br>[25.4mm]                 | 6.19"<br>[157.3mm] | 1.0"<br>(25.4mm) | .50"<br>(12.2mm) |

The above tool model is designed for use with a flush socket gear or extended sockets.

| Table 1<br>Frangible Collar<br>Hex Size (Across Flats) |          | Table 2<br>Ext'd.Socket Length |           | Table 3<br>Hex Keys<br>(See Table 5, Accessories) |                    | Table 4<br>Drive Shaft Extended Length |        |            |
|--|----------|--------------------------------|-----------|---|--------------------|--|--------|------------|
| Code   | Hex Size | Code                           | Extension | Code  | Size               | Code                                   | Length | Index Unit |
| 375  | 3/8"     | C                              | 0.375"    | 094T  | 3/32" Hex Key      | A                                      | -      | With       |
| 437  | 7/16"    | D                              | 0.500"    | 125T  | 1/8" Dia. Hex Key  | B                                      | -      | Without    |
| 500  | 1/2"     | E                              | 0.625"    | 156T  | 5/32" Dia. Hex Key | C                                      | 2.0"   | With       |
| 562  | 9/16"    | G                              | 1.0"      | 187T  | 3/16" Dia. Hex Key | D                                      | 2.0"   | Without    |
|  |          | J                              | 2.0"      |   |                    |  |        |            |

Example of Complete Tool Model Number:

**CTL1436 A 500 G 156T**

