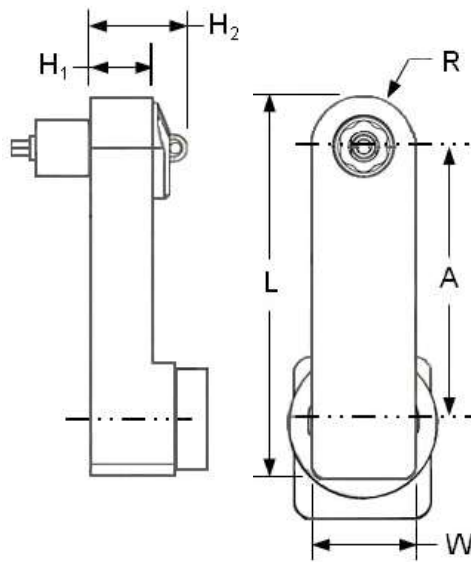


90° Offset Lever Tools



450 in-lbs



Ref: LTV38N68-13

RPM at Socket: 290

Model Number	No. of Gears	A	H ₁	H ₂	L	W	R
CT5720A	7	3.69" [93.6mm]	.69" [17.5mm]	1.0" [25.4mm]	4.88" [124.0mm]	1.12" [28.4mm]	.56" [14.2mm]

This is a very durable tool design for general purpose applications and is designed for Use in a flush condition or with extended sockets and hex keys when required.

This gear head has 360° indexing capability.

Table 1

Frangible Collar
Hex Size (Across Flats)

Code	Hex Size
437	7/16"
500	1/2"
562	9/16"
625	5/8"

Table 2

Ext'd. Socket Length

Code	Extension
A	Flush
E	5/8"
G	1.0"
J	2.0"

Table 3

Key Hex Size

Code	Size
000	NA
156T	5/32"
187T	3/16"

.625 Max A/F Flush Socket Gear

Example of Complete Tool Model Number:

CT5720A 500 A 156T

Hex Key Size (Table 3)
Extended Socket Length (Table 2)
Fastener Hex Size (Table 1)
Tool Model Number