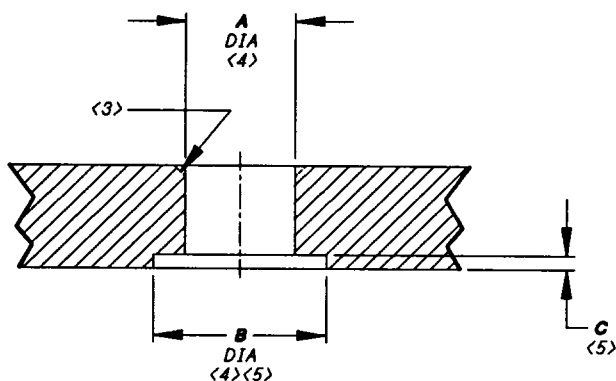
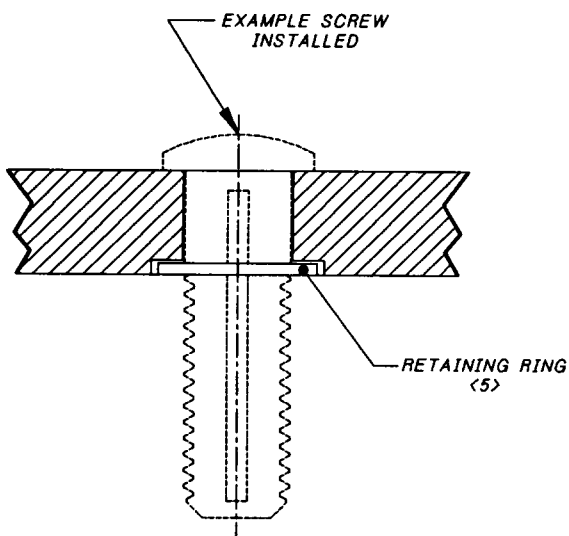


Voi-Shan • Tridair • Screwcorp



SCREW THREAD SIZE	A DIA	B DIA	C DEPTH
.138-32	.138 .144	.270 .280	.030 .040
.164-32	.164 .170	.320 .330	.030 .040
.190-32	.190 .196	.350 .360	.035 .045
.250-28	.250 .256	.430 .440	.035 .045
.3125-24	.313 .319	.550 .560	.040 .050
.375-24	.375 .381	.600 .610	.040 .050



PANEL PREPARATION AND INSTALLATION:

1. DRILL A DIAMETER HOLE THRU PANEL.
2. COUNTERBORE B DIAMETER x C DEPTH FOR RETAINING RING CAVITY.
3. WHEN USING FLUSH HEAD SCREWS, COUNTERSINK PANEL TOP SURFACE IN ACCORDANCE WITH THE REQUIREMENTS OF THE SCREW BEING USED.
4. WHEN SCREW FLOAT IS REQUIRED (FOR PROTRUDING HEAD SCREWS), A AND B DIAMETERS MAY BE INCREASED TO ACCOMMODATE SIDE-TO-SIDE MOVEMENT OF THE SCREW. CARE SHOULD BE TAKEN SO THAT THE INCREASED HOLE DIAMETERS DO NOT ALLOW EITHER THE SCREW HEAD OR THE RETAINING RING TO FALL INTO OR THRU THE A DIAMETER HOLE.
5. B DIAMETER x C DEPTH RETAINING RING CAVITY MAY BE IN THE BOTTOM SURFACE OF THE TOP PANEL AS SHOWN OR IN THE TOP SURFACE OF THE SUBSTRUCTURE AT CUSTOMER OPTION.
6. SEE DRAWING NUMBER CA2210T-() FOR INSTALLATION PROCEDURE.
7. UNLESS OTHERWISE SPECIFIED: TOLERANCES, DECIMALS: .XX ±.02, .XXX ±.010, ANGLES: ±2°.

PROJECT NUMBER: 88-208

APPROVED DATE	22 MAY 89
REV. LETTER AND DATE	C 17 MAY 94
ECN NUMBER	ECN 35308

Fairchild AEROSPACE FASTENER DIVISION
ENGINEERING CENTER
 3010 WEST LOMITA BOULEVARD
 TORRANCE, CA 90505

CAGE CODE **92215**
 VOI-SHAN PRODUCT

INSTALLATION DATA, SOLID RETAINING RING TYPE CAPTIVE SCREW ASSEMBLIES

CAL-STD-0260