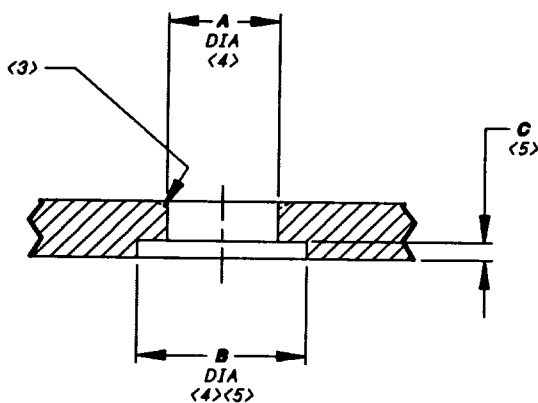
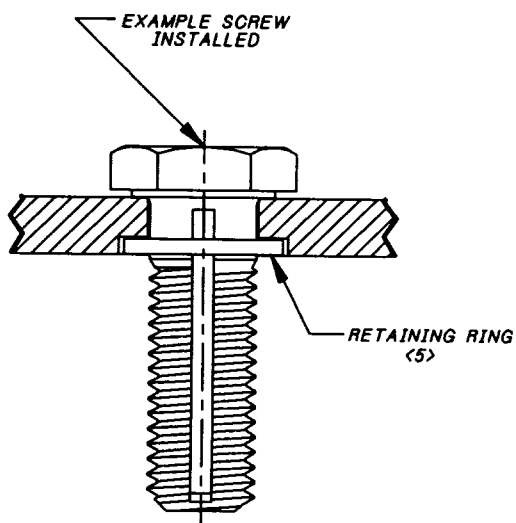


Voi-Shan • Tridair • Screwcorp



SCREW THREAD SIZE	A DIA	B DIA	C DEPTH
.138-32	.138 .144	.230 .240	.020 .030
.164-32	.164 .170	.260 .270	.025 .035



PANEL PREPARATION AND INSTALLATION:

1. DRILL A DIAMETER HOLE THRU PANEL.
2. COUNTERBORE B DIAMETER x C DEPTH FOR RETAINING RING CAVITY.
- (3) WHEN USING FLUSH HEAD SCREWS, COUNTERSINK PANEL TOP SURFACE IN ACCORDANCE WITH THE REQUIREMENTS OF THE SCREW BEING USED.
- (4) WHEN SCREW FLOAT IS REQUIRED (FOR PROTRUDING HEAD SCREWS), A AND B DIAMETERS MAY BE INCREASED TO ACCOMMODATE SIDE-TO-SIDE MOVEMENT OF THE SCREW. CARE SHOULD BE TAKEN SO THAT THE INCREASED HOLE DIAMETERS DO NOT ALLOW EITHER THE SCREW HEAD OR THE RETAINING RING TO FALL INTO OR THRU THE A DIAMETER HOLE.
- (5) B DIAMETER x C DEPTH RETAINING RING CAVITY MAY BE IN THE BOTTOM SURFACE OF THE TOP PANEL AS SHOWN OR IN THE TOP SURFACE OF THE SUBSTRUCTURE AT CUSTOMERS OPTION.
6. SEE DRAWING NUMBER CA2240T-() FOR INSTALLATION PROCEDURE.

PROJECT NUMBER: 92-065 AND 95-019A

APPROVED DATE	5 DEC 91
REV. LETTER AND DATE	A 10 NOV 94
ECN NUMBER	ECN 36172

Fairchild AEROSPACE FASTENER DIVISION
TELETYPE ENGINEERING CENTER
 3010 WEST LOMITA BOULEVARD
 TORRANCE, CA 90505

CAGE CODE	92215
TRIDAIR PRODUCT	
CAL-STD-0259	
SHEET 1	OF 1

INSTALLATION DATA, SOLID RETAINING RING TYPE CAPTIVE SCREW ASSEMBLIES

SCANNED