

Voi-Shan • Tridair • Screwcorp

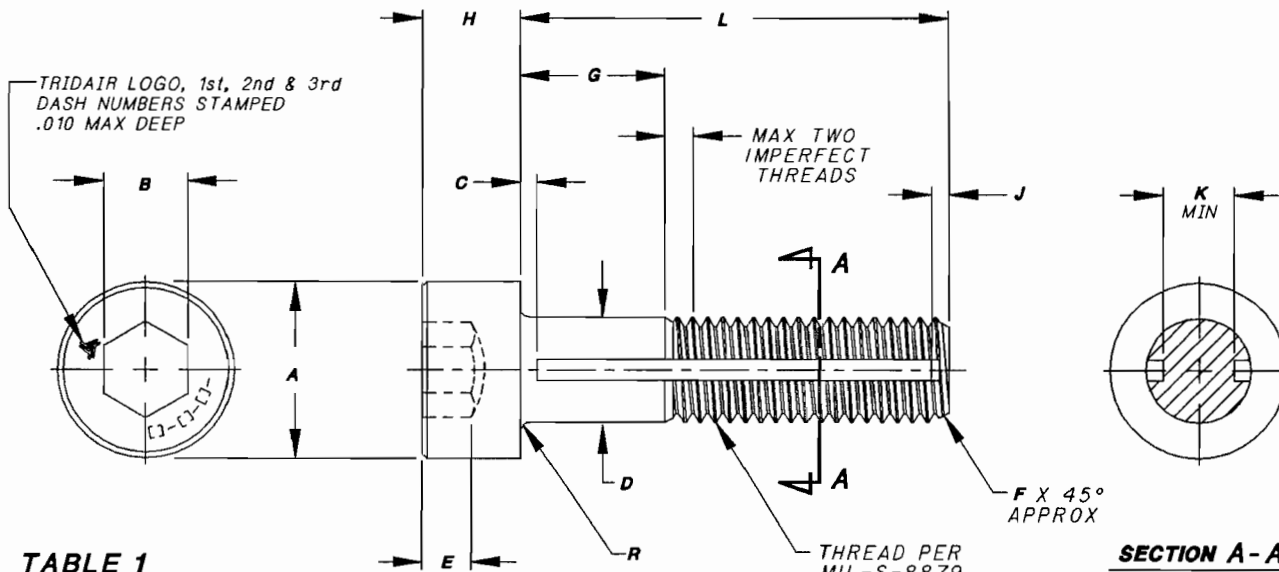


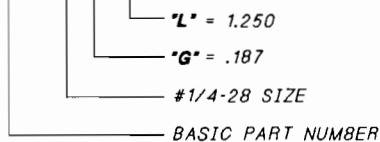
TABLE 1

FIRST DASH NO.	THREAD SIZE	A DIA	B NOM	C MAX	D DIA	E MIN	F	H	J	K MIN	R RAD	ULTIMATE TENSILE STRENGTH MIN (CALCULATED)	ULTIMATE SINGLE SHEAR STRENGTH MIN (CALCULATED)
-06	.1380-32UNJC-3A	.226 .218	.109	.050	.1375 .1365	.064	.030	.138 .134	.040	.067	.015 .005	1,060 LBS.	750 LBS.
-08	.1640-32UNJC-3A	.270 .262	.141	.050	.1635 .1625	.077	.030	.164 .159	.040	.086	.020 .010	1,660 LBS.	990 LBS.
-10	.1900-32UNJF-3A	.312 .303	.156	.050	.1895 .1885	.090	.030	.190 .185	.040	.108	.020 .010	2,425 LBS.	1,450 LBS.
-4	.2500-28UNJF-3A	.375 .365	.188	.050	.2495 .2485	.120	.035	.250 .244	.040	.162	.020 .010	4,625 LBS.	2,775 LBS.
-5	.3125-24UNJF-3A	.469 .457	.250	.065	.3120 .3110	.151	.040	.312 .306	.050	.205	.020 .010	7,400 LBS.	4,425 LBS.
-6	.3750-24UNJF-3A	.562 .550	.312	.065	.3745 .3735	.182	.040	.375 .368	.050	.268	.025 .015	11,300 LBS.	7,300 LBS.

NOTES:

- MATERIAL: A-286 CRES PER AMS5731, AMS5732, AMS5737.
- HEAT TREAT: 160,000 PSI MINIMUM TENSILE.
- FINISH: PASSIVATED PER QQ-P-35.
- HEAD: HEX SOCKET HEAD CAP SCREW PER ANSI B18.3, PLAIN, NOT KNURLED.
- SCREW TO BE USED WITH CA2210-() R RETAINING RING TO CAPTIVATE TO PANEL.
- PANEL PREPARATION: REFER TO CAL-STD-0260 DRAWING.
- INSTALLATION: REFER TO TRIDAIR DRAWING NUMBER CA2210T-() .

8. PART NUMBER EXAMPLE:
CA2295-4-6-20



- MAGNETIC PERMEABILITY IS LESS THAN 2.0 (AIR = 1.0) FOR FIELD STRENGTH OF H200 OERSTEDS. MAGNETIC PERMEABILITY INDICATOR PER ASTM A342.
- TOLERANCES; UNLESS OTHERWISE SPECIFIED: DECIMALS .XX ±.02, .XXX ±.010, ANGLES: ±2°.
- LONGER GRIPS (IN 1/32" INCREMENTS) AND LONGER LENGTHS (IN 1/16" INCREMENTS) THAN ARE SHOWN IN TABLES 2 THRU 7 MAY BE ORDERED.

INTERIM DOCUMENT REVISION	
Rev.	Date
B1	10/21/90
DAF #	94301

PROJECT NUMBER: 93-173 & 96-006

APPROVED DATE	24 JUN 93
REV. LETTER AND DATE	B 20 JUL 93
ECN NUMBER	
ECN 37371	

Fairchild AEROSPACE FASTENER DIVISION
ENGINEERING CENTER
 3000 WEST LOMITA BOULEVARD
 TORRANCE, CA 90505

CAGE CODE **29372**
 TRIDAIR PRODUCT

CAPTIVE SCREW, RETAINING RING TYPE
ROUND HEAD, HEX SOCKET RECESS
A286 CRES, 160 KSI

CA2295-()-()-()

SCANNED

Voi-Shan • Tridair • Screwcorp

TABLE 2

.138-32 SIZE FIRST DASH NO.-06	G GRIP									L
	.062	.094	.125	.156	.187	.218	.250	.281	.312	LENGTH
-2-7	-3-7	-4-7	-5-7	-6-7	-7-7	-8-7	-9-7	-10-7	.437	
-2-8	-3-8	-4-8	-5-8	-6-8	-7-8	-8-8	-9-8	-10-8	.500	
-2-9	-3-9	-4-9	-5-9	-6-9	-7-9	-8-9	-9-9	-10-9	.562	
-2-10	-3-10	-4-10	-5-10	-6-10	-7-10	-8-10	-9-10	-10-10	.625	
-2-11	-3-11	-4-11	-5-11	-6-11	-7-11	-8-11	-9-11	-10-11	.687	
-2-12	-3-12	-4-12	-5-12	-6-12	-7-12	-8-12	-9-12	-10-12	.750	
-2-13	-3-13	-4-13	-5-13	-6-13	-7-13	-8-13	-9-13	-10-13	.812	
-2-14	-3-14	-4-14	-5-14	-6-14	-7-14	-8-14	-9-14	-10-14	.875	
-2-15	-3-15	-4-15	-5-15	-6-15	-7-15	-8-15	-9-15	-10-15	.937	
-2-16	-3-16	-4-16	-5-16	-6-16	-7-16	-8-16	-9-16	-10-16	1.000	
-2-17	-3-17	-4-17	-5-17	-6-17	-7-17	-8-17	-9-17	-10-17	1.062	
-2-18	-3-18	-4-18	-5-18	-6-18	-7-18	-8-18	-9-18	-10-18	1.125	
-2-19	-3-19	-4-19	-5-19	-6-19	-7-19	-8-19	-9-19	-10-19	1.187	
-2-20	-3-20	-4-20	-5-20	-6-20	-7-20	-8-20	-9-20	-10-20	1.250	
-2-21	-3-21	-4-21	-5-21	-6-21	-7-21	-8-21	-9-21	-10-21	1.312	
-2-22	-3-22	-4-22	-5-22	-6-22	-7-22	-8-22	-9-22	-10-22	1.375	
-2-23	-3-23	-4-23	-5-23	-6-23	-7-23	-8-23	-9-23	-10-23	1.437	
-2-24	-3-24	-4-24	-5-24	-6-24	-7-24	-8-24	-9-24	-10-24	1.500	
-2-25	-3-25	-4-25	-5-25	-6-25	-7-25	-8-25	-9-25	-10-25	1.562	
-2-26	-3-26	-4-26	-5-26	-6-26	-7-26	-8-26	-9-26	-10-26	1.625	
-2-27	-3-27	-4-27	-5-27	-6-27	-7-27	-8-27	-9-27	-10-27	1.687	
-2-28	-3-28	-4-28	-5-28	-6-28	-7-28	-8-28	-9-28	-10-28	1.750	

TABLE 3

.164-32 SIZE FIRST DASH NO.-08	G GRIP									L
	.062	.094	.125	.156	.187	.218	.250	.281	.312	LENGTH
-2-7	-3-7	-4-7	-5-7	-6-7	-7-7	-8-7	-9-7	-10-7	.437	
-2-8	-3-8	-4-8	-5-8	-6-8	-7-8	-8-8	-9-8	-10-8	.500	
-2-9	-3-9	-4-9	-5-9	-6-9	-7-9	-8-9	-9-9	-10-9	.562	
-2-10	-3-10	-4-10	-5-10	-6-10	-7-10	-8-10	-9-10	-10-10	.625	
-2-11	-3-11	-4-11	-5-11	-6-11	-7-11	-8-11	-9-11	-10-11	.687	
-2-12	-3-12	-4-12	-5-12	-6-12	-7-12	-8-12	-9-12	-10-12	.750	
-2-13	-3-13	-4-13	-5-13	-6-13	-7-13	-8-13	-9-13	-10-13	.812	
-2-14	-3-14	-4-14	-5-14	-6-14	-7-14	-8-14	-9-14	-10-14	.875	
-2-15	-3-15	-4-15	-5-15	-6-15	-7-15	-8-15	-9-15	-10-15	.937	
-2-16	-3-16	-4-16	-5-16	-6-16	-7-16	-8-16	-9-16	-10-16	1.000	
-2-17	-3-17	-4-17	-5-17	-6-17	-7-17	-8-17	-9-17	-10-17	1.062	
-2-18	-3-18	-4-18	-5-18	-6-18	-7-18	-8-18	-9-18	-10-18	1.125	
-2-19	-3-19	-4-19	-5-19	-6-19	-7-19	-8-19	-9-19	-10-19	1.187	
-2-20	-3-20	-4-20	-5-20	-6-20	-7-20	-8-20	-9-20	-10-20	1.250	
-2-21	-3-21	-4-21	-5-21	-6-21	-7-21	-8-21	-9-21	-10-21	1.312	
-2-22	-3-22	-4-22	-5-22	-6-22	-7-22	-8-22	-9-22	-10-22	1.375	
-2-23	-3-23	-4-23	-5-23	-6-23	-7-23	-8-23	-9-23	-10-23	1.437	
-2-24	-3-24	-4-24	-5-24	-6-24	-7-24	-8-24	-9-24	-10-24	1.500	
-2-25	-3-25	-4-25	-5-25	-6-25	-7-25	-8-25	-9-25	-10-25	1.562	
-2-26	-3-26	-4-26	-5-26	-6-26	-7-26	-8-26	-9-26	-10-26	1.625	
-2-27	-3-27	-4-27	-5-27	-6-27	-7-27	-8-27	-9-27	-10-27	1.687	
-2-28	-3-28	-4-28	-5-28	-6-28	-7-28	-8-28	-9-28	-10-28	1.750	

INTERIM DOCUMENT REVISION		
Rev.	Date	DAF #
B1	10/21/10	94301

S43337 PROJECT NUMBER: 93-173 & 96-006

APPROVED DATE	24 JUN 93
REV. LETTER AND DATE	B 20 JUL 95
ECN NUMBER	ECN 37371

Fairchild AEROSPACE FASTENER DIVISION
 ENGINEERING CENTER
 3000 WEST LOMITA BOULEVARD
 TORRANCE, CA 90505

CAPTIVE SCREW, RETAINING RING TYPE
 ROUND HEAD, HEX SOCKET RECESS
 A286 CRES, 160 KSI

CAGE CODE	29372
TRIDAIR PRODUCT	
CA2295-(-)-(-)-(-)	
SHEET	2 OF 4

Voi-Shan • Tridair • Screwcorp

TABLE 4

.190-32 SIZE FIRST DASH NO.-10	G GRIP									L
	.062	.094	.125	.156	.187	.218	.250	.281	.312	LENGTH
-2-7	-3-7	-4-7	-5-7	-6-7	-7-7	-8-7	-9-7	-10-7	.437	
-2-8	-3-8	-4-8	-5-8	-6-8	-7-8	-8-8	-9-8	-10-8	.500	
-2-9	-3-9	-4-9	-5-9	-6-9	-7-9	-8-9	-9-9	-10-9	.562	
-2-10	-3-10	-4-10	-5-10	-6-10	-7-10	-8-10	-9-10	-10-10	.625	
-2-11	-3-11	-4-11	-5-11	-6-11	-7-11	-8-11	-9-11	-10-11	.687	
-2-12	-3-12	-4-12	-5-12	-6-12	-7-12	-8-12	-9-12	-10-12	.750	
-2-13	-3-13	-4-13	-5-13	-6-13	-7-13	-8-13	-9-13	-10-13	.812	
-2-14	-3-14	-4-14	-5-14	-6-14	-7-14	-8-14	-9-14	-10-14	.875	
-2-15	-3-15	-4-15	-5-15	-6-15	-7-15	-8-15	-9-15	-10-15	.937	
-2-16	-3-16	-4-16	-5-16	-6-16	-7-16	-8-16	-9-16	-10-16	1.000	
-2-17	-3-17	-4-17	-5-17	-6-17	-7-17	-8-17	-9-17	-10-17	1.062	
-2-18	-3-18	-4-18	-5-18	-6-18	-7-18	-8-18	-9-18	-10-18	1.125	
-2-19	-3-19	-4-19	-5-19	-6-19	-7-19	-8-19	-9-19	-10-19	1.187	
-2-20	-3-20	-4-20	-5-20	-6-20	-7-20	-8-20	-9-20	-10-20	1.250	
-2-21	-3-21	-4-21	-5-21	-6-21	-7-21	-8-21	-9-21	-10-21	1.312	
-2-22	-3-22	-4-22	-5-22	-6-22	-7-22	-8-22	-9-22	-10-22	1.375	
-2-23	-3-23	-4-23	-5-23	-6-23	-7-23	-8-23	-9-23	-10-23	1.437	
-2-24	-3-24	-4-24	-5-24	-6-24	-7-24	-8-24	-9-24	-10-24	1.500	
-2-25	-3-25	-4-25	-5-25	-6-25	-7-25	-8-25	-9-25	-10-25	1.562	
-2-26	-3-26	-4-26	-5-26	-6-26	-7-26	-8-26	-9-26	-10-26	1.625	
-2-27	-3-27	-4-27	-5-27	-6-27	-7-27	-8-27	-9-27	-10-27	1.687	
-2-28	-3-28	-4-28	-5-28	-6-28	-7-28	-8-28	-9-28	-10-28	1.750	

TABLE 5

.250-28 SIZE FIRST DASH NO.-4	G GRIP									L
	.062	.094	.125	.156	.187	.218	.250	.281	.312	LENGTH
-2-7	-3-7	-4-7	-5-7	-6-7	-7-7	-8-7	-9-7	-10-7	.437	
-2-8	-3-8	-4-8	-5-8	-6-8	-7-8	-8-8	-9-8	-10-8	.500	
-2-9	-3-9	-4-9	-5-9	-6-9	-7-9	-8-9	-9-9	-10-9	.562	
-2-10	-3-10	-4-10	-5-10	-6-10	-7-10	-8-10	-9-10	-10-10	.625	
-2-11	-3-11	-4-11	-5-11	-6-11	-7-11	-8-11	-9-11	-10-11	.687	
-2-12	-3-12	-4-12	-5-12	-6-12	-7-12	-8-12	-9-12	-10-12	.750	
-2-13	-3-13	-4-13	-5-13	-6-13	-7-13	-8-13	-9-13	-10-13	.812	
-2-14	-3-14	-4-14	-5-14	-6-14	-7-14	-8-14	-9-14	-10-14	.875	
-2-15	-3-15	-4-15	-5-15	-6-15	-7-15	-8-15	-9-15	-10-15	.937	
-2-16	-3-16	-4-16	-5-16	-6-16	-7-16	-8-16	-9-16	-10-16	1.000	
-2-17	-3-17	-4-17	-5-17	-6-17	-7-17	-8-17	-9-17	-10-17	1.062	
-2-18	-3-18	-4-18	-5-18	-6-18	-7-18	-8-18	-9-18	-10-18	1.125	
-2-19	-3-19	-4-19	-5-19	-6-19	-7-19	-8-19	-9-19	-10-19	1.187	
-2-20	-3-20	-4-20	-5-20	-6-20	-7-20	-8-20	-9-20	-10-20	1.250	
-2-21	-3-21	-4-21	-5-21	-6-21	-7-21	-8-21	-9-21	-10-21	1.312	
-2-22	-3-22	-4-22	-5-22	-6-22	-7-22	-8-22	-9-22	-10-22	1.375	
-2-23	-3-23	-4-23	-5-23	-6-23	-7-23	-8-23	-9-23	-10-23	1.437	
-2-24	-3-24	-4-24	-5-24	-6-24	-7-24	-8-24	-9-24	-10-24	1.500	
-2-25	-3-25	-4-25	-5-25	-6-25	-7-25	-8-25	-9-25	-10-25	1.562	
-2-26	-3-26	-4-26	-5-26	-6-26	-7-26	-8-26	-9-26	-10-26	1.625	
-2-27	-3-27	-4-27	-5-27	-6-27	-7-27	-8-27	-9-27	-10-27	1.687	
-2-28	-3-28	-4-28	-5-28	-6-28	-7-28	-8-28	-9-28	-10-28	1.750	

INTERIM DOCUMENT REVISION		
Rev.	Date	DAF #
B1	10/21/10	94301

5433371 PROJECT NUMBER: 93-173 & 96-006

APPROVED DATE	24 JUN 93
REV. LETTER AND DATE	B 28 JUL 95
ECN NUMBER	ECN 37377

Fairchild AEROSPACE FASTENER DIVISION
ENGINEERING CENTER
 3000 WEST LOMITA BOULEVARD
 TORRANCE, CA 90505

CAGE CODE **29372**
 TRIDAIR PRODUCT

CAPTIVE SCREW, RETAINING RING TYPE
ROUND HEAD, HEX SOCKET RECESS
A286 CRES, 160 KSI

CA2295-()-()-()

SHEET 3 OF 4

Voi-Shan • Tridair • Screwcorp

TABLE 6

.3125-24 SIZE FIRST DASH NO.-5	G GRIP								L
	.094	.125	.156	.187	.218	.250	.281	.312	LENGTH
-3-7	-4-7	-5-7	-6-7	-7-7					.437
-3-8	-4-8	-5-8	-6-8	-7-8	-8-8	-9-8			.500
-3-9	-4-9	-5-9	-6-9	-7-9	-8-9	-9-9	-10-9		.562
-3-10	-4-10	-5-10	-6-10	-7-10	-8-10	-9-10	-10-10		.625
-3-11	-4-11	-5-11	-6-11	-7-11	-8-11	-9-11	-10-11		.687
-3-12	-4-12	-5-12	-6-12	-7-12	-8-12	-9-12	-10-12		.750
-3-13	-4-13	-5-13	-6-13	-7-13	-8-13	-9-13	-10-13		.812
-3-14	-4-14	-5-14	-6-14	-7-14	-8-14	-9-14	-10-14		.875
-3-15	-4-15	-5-15	-6-15	-7-15	-8-15	-9-15	-10-15		.937
-3-16	-4-16	-5-16	-6-16	-7-16	-8-16	-9-16	-10-16		1.000
-3-17	-4-17	-5-17	-6-17	-7-17	-8-17	-9-17	-10-17		1.062
-3-18	-4-18	-5-18	-6-18	-7-18	-8-18	-9-18	-10-18		1.125
-3-19	-4-19	-5-19	-6-19	-7-19	-8-19	-9-19	-10-19		1.187
-3-20	-4-20	-5-20	-6-20	-7-20	-8-20	-9-20	-10-20		1.250
-3-21	-4-21	-5-21	-6-21	-7-21	-8-21	-9-21	-10-21		1.312
-3-22	-4-22	-5-22	-6-22	-7-22	-8-22	-9-22	-10-22		1.375
-3-23	-4-23	-5-23	-6-23	-7-23	-8-23	-9-23	-10-23		1.437
-3-24	-4-24	-5-24	-6-24	-7-24	-8-24	-9-24	-10-24		1.500
-3-25	-4-25	-5-25	-6-25	-7-25	-8-25	-9-25	-10-25		1.562
-3-26	-4-26	-5-26	-6-26	-7-26	-8-26	-9-26	-10-26		1.625
-3-27	-4-27	-5-27	-6-27	-7-27	-8-27	-9-27	-10-27		1.687
-3-28	-4-28	-5-28	-6-28	-7-28	-8-28	-9-28	-10-28		1.750

TABLE 7

.375-24 SIZE FIRST DASH NO.-6	G GRIP								L	
	.094	.125	.156	.187	.218	.250	.281	.312	.437	LENGTH
-3-7	-4-7	-5-7	-6-7	-7-7						.437
-3-8	-4-8	-5-8	-6-8	-7-8	-8-8	-9-8				.500
-3-9	-4-9	-5-9	-6-9	-7-9	-8-9	-9-9	-10-9			.562
-3-10	-4-10	-5-10	-6-10	-7-10	-8-10	-9-10	-10-10			.625
-3-11	-4-11	-5-11	-6-11	-7-11	-8-11	-9-11	-10-11			.687
-3-12	-4-12	-5-12	-6-12	-7-12	-8-12	-9-12	-10-12			.750
-3-13	-4-13	-5-13	-6-13	-7-13	-8-13	-9-13	-10-13	-14-13		.812
-3-14	-4-14	-5-14	-6-14	-7-14	-8-14	-9-14	-10-14			.875
-3-15	-4-15	-5-15	-6-15	-7-15	-8-15	-9-15	-10-15			.937
-3-16	-4-16	-5-16	-6-16	-7-16	-8-16	-9-16	-10-16			1.000
-3-17	-4-17	-5-17	-6-17	-7-17	-8-17	-9-17	-10-17			1.062
-3-18	-4-18	-5-18	-6-18	-7-18	-8-18	-9-18	-10-18			1.125
-3-19	-4-19	-5-19	-6-19	-7-19	-8-19	-9-19	-10-19			1.187
-3-20	-4-20	-5-20	-6-20	-7-20	-8-20	-9-20	-10-20			1.250
-3-21	-4-21	-5-21	-6-21	-7-21	-8-21	-9-21	-10-21			1.312
-3-22	-4-22	-5-22	-6-22	-7-22	-8-22	-9-22	-10-22			1.375
-3-23	-4-23	-5-23	-6-23	-7-23	-8-23	-9-23	-10-23			1.437
-3-24	-4-24	-5-24	-6-24	-7-24	-8-24	-9-24	-10-24			1.500
-3-25	-4-25	-5-25	-6-25	-7-25	-8-25	-9-25	-10-25			1.562
-3-26	-4-26	-5-26	-6-26	-7-26	-8-26	-9-26	-10-26			1.625
-3-27	-4-27	-5-27	-6-27	-7-27	-8-27	-9-27	-10-27			1.687
-3-28	-4-28	-5-28	-6-28	-7-28	-8-28	-9-28	-10-28			1.750

INTERIM DOCUMENT REVISION		
Rev.	Date	DAF #
B1	10/21/10	94301

PROJECT NUMBER: 93-173 & 96-006

APPROVED DATE	24 JUN 93
REV. LETTER AND DATE	B 28 JUL 93
ECN NUMBER	ECN 37377

Fairchild AEROSPACE FASTENER DIVISION
ENGINEERING CENTER
 3000 WEST LOMITA BOULEVARD
 TORRANCE, CA 90505

CAPTIVE SCREW, RETAINING RING TYPE
ROUND HEAD, HEX SOCKET RECESS
A286 CRES, 160 KSI

CAGE CODE **29372**
 TRIDAIR PRODUCT

CA2295-()-()-()

SHEET 4 OF 4