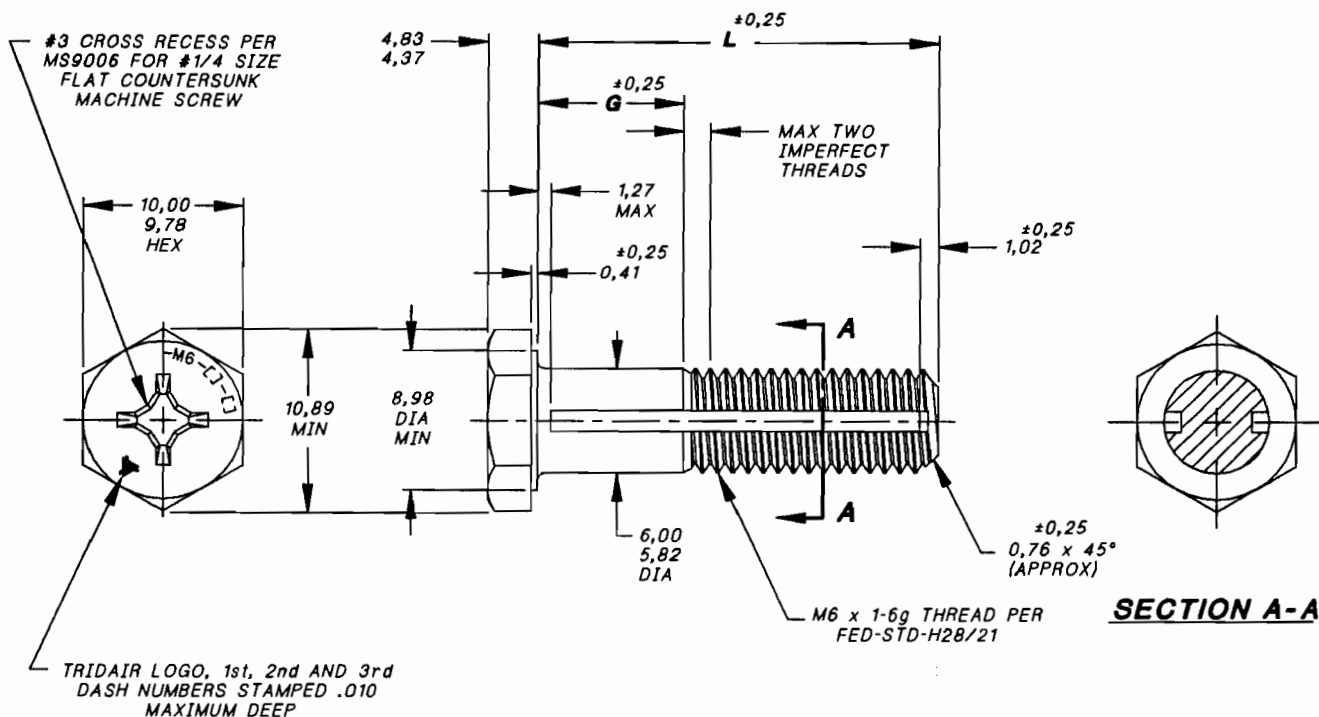
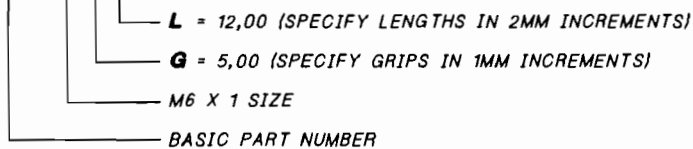


Voi-Shan • Tridair • Screwcorp



NOTES, UNLESS OTHERWISE SPECIFIED:

1. MATERIAL: 300 SERIES CRES PER QQ-S-763.
2. FINISH: PASSIVATED PER QQ-P-35.
3. MINIMUM STRENGTHS (CALCULATED):
 - 3.1. ULTIMATE TENSILE: 7,330N.
 - 3.2. ULTIMATE SINGLE SHEAR: 2,750N.
4. RECOMMENDED SEATING TORQUE: 3.5 TO 5.4 N M.
5. SCREW TO BE USED WITH CA2210-M6R TO CAPTIVE TO PANEL.
6. PANEL PREPARATION: REFER TO CAL-STD-0273 DRAWING, M6 x 1 THREAD SIZE.
7. INSTALLATION: REFER TO CA2210T-M() DRAWING.
8. DIMENSIONS ARE IN MILLIMETERS.
9. PART CALLOUT EXAMPLE:
CA2276-M6-5-12



INTERIM DOCUMENT REVISION		
Rev.	Date	DAF #
A1	10/21/10	94301

PROJECT NUMBER: 92-218

APPROVED DATE	5 NOV 92
REV. LETTER AND DATE	A 1 NOV 90
ECN NUMBER	ECN 39410

Fairchild AEROSPACE FASTENER DIVISION
 ENGINEERING CENTER
 3000 WEST LOMITA BOULEVARD
 TORRANCE, CA 90505

CAGE CODE **29372**
 TRIDAIR PRODUCT

SCREW, CAPTIVE
 HEX HEAD, CRES,
 M6 x 1 SIZE

CA2276-M6-()-()

SHEET 1 OF 2

SCANNED

Voi-Shan • Tridair • Screwcorp

G ±0,25										L ±0,25
1,00	2,00	3,00	4,00	5,00	6,00	7,00	8,00	9,00	10,00	
-1-10	-2-10	-3-10	-4-10							10,00
-1-12	-2-12	-3-12	-4-12	-5-12	-6-12					12,00
-1-14	-2-14	-3-14	-4-14	-5-14	-6-14	-7-14	-8-14			14,00
-1-16	-2-16	-3-16	-4-16	-5-16	-6-16	-7-16	-8-16	-9-16	-10-16	16,00
-1-18	-2-18	-3-18	-4-18	-5-18	-6-18	-7-18	-8-18	-9-18	-10-18	18,00
-1-20	-2-20	-3-20	-4-20	-5-20	-6-20	-7-20	-8-20	-9-20	-10-20	20,00
-1-22	-2-22	-3-22	-4-22	-5-22	-6-22	-7-22	-8-22	-9-22	-10-22	22,00
-1-24	-2-24	-3-24	-4-24	-5-24	-6-24	-7-24	-8-24	-9-24	-10-24	24,00
-1-26	-2-26	-3-26	-4-26	-5-26	-6-26	-7-26	-8-26	-9-26	-10-26	26,00
-1-28	-2-28	-3-28	-4-28	-5-28	-6-28	-7-28	-8-28	-9-28	-10-28	28,00
-1-30	-2-30	-3-30	-4-30	-5-30	-6-30	-7-30	-8-30	-9-30	-10-30	30,00
-1-32	-2-32	-3-32	-4-32	-5-32	-6-32	-7-32	-8-32	-9-32	-10-32	32,00
-1-34	-2-34	-3-34	-4-34	-5-34	-6-34	-7-34	-8-34	-9-34	-10-34	34,00
-1-36	-2-36	-3-36	-4-36	-5-36	-6-36	-7-36	-8-36	-9-36	-10-36	36,00
-1-38	-2-38	-3-38	-4-38	-5-38	-6-38	-7-38	-8-38	-9-38	-10-38	38,00
-1-40	-2-40	-3-40	-4-40	-5-40	-6-40	-7-40	-8-40	-9-40	-10-40	40,00
-1-42	-2-42	-3-42	-4-42	-5-42	-6-42	-7-42	-8-42	-9-42	-10-42	42,00
-1-44	-2-44	-3-44	-4-44	-5-44	-6-44	-7-44	-8-44	-9-44	-10-44	44,00
-1-46	-2-46	-3-46	-4-46	-5-46	-6-46	-7-46	-8-46	-9-46	-10-46	46,00
-1-48	-2-48	-3-48	-4-48	-5-48	-6-48	-7-48	-8-48	-9-48	-10-48	48,00
-1-50	-2-50	-3-50	-4-50	-5-50	-6-50	-7-50	-8-50	-9-50	-10-50	50,00

G ±0,25										L ±0,25
11,00	12,00	13,00	14,00	15,00	16,00	17,00	18,00	19,00		
										10,00
										12,00
										14,00
										16,00
-11-18	-12-18									18,00
-11-20	-12-20	-13-20	-14-20							20,00
-11-22	-12-22	-13-22	-14-22	-15-22	-16-22					22,00
-11-24	-12-24	-13-24	-14-24	-15-24	-16-24	-17-24	-18-24			24,00
-11-26	-12-26	-13-26	-14-26	-15-26	-16-26	-17-26	-18-26	-19-26		26,00
-11-28	-12-28	-13-28	-14-28	-15-28	-16-28	-17-28	-18-28	-19-28		28,00
-11-30	-12-30	-13-30	-14-30	-15-30	-16-30	-17-30	-18-30	-19-30		30,00
-11-32	-12-32	-13-32	-14-32	-15-32	-16-32	-17-32	-18-32	-19-32		32,00
-11-34	-12-34	-13-34	-14-34	-15-34	-16-34	-17-34	-18-34	-19-34		34,00
-11-36	-12-36	-13-36	-14-36	-15-36	-16-36	-17-36	-18-36	-19-36		36,00
-11-38	-12-38	-13-38	-14-38	-15-38	-16-38	-17-38	-18-38	-19-38		38,00
-11-40	-12-40	-13-40	-14-40	-15-40	-16-40	-17-40	-18-40	-19-40		40,00
-11-42	-12-42	-13-42	-14-42	-15-42	-16-42	-17-42	-18-42	-19-42		42,00
-11-44	-12-44	-13-44	-14-44	-15-44	-16-44	-17-44	-18-44	-19-44		44,00
-11-46	-12-46	-13-46	-14-46	-15-46	-16-46	-17-46	-18-46	-19-46		46,00
-11-48	-12-48	-13-48	-14-48	-15-48	-16-48	-17-48	-18-48	-19-48		48,00
-11-50	-12-50	-13-50	-14-50	-15-50	-16-50	-17-50	-18-50	-19-50		50,00

INTERIM DOCUMENT REVISION	
Rev.	DAF #
A1	94301
Date	
10/24/10	

PROJECT NUMBER: 92-218

APPROVED DATE	5 NOV 92
REV. LETTER AND DATE	A 1 NOV 98
ECN NUMBER	EON 09410

Fairchild AEROSPACE FASTENER DIVISION
ENGINEERING CENTER
 3000 WEST LOMITA BOULEVARD
 TORRANCE, CA 90505

SCREW, CAPTIVE
 HEX HEAD, CRES,
 M6 x 1 SIZE

CAGE CODE	29372
TRIDAIR PRODUCT	
CA2276-M6-(-)()	
SHEET	2 OF 2

SCANNED