

Voi-Shan · Tridair · Screwcorp

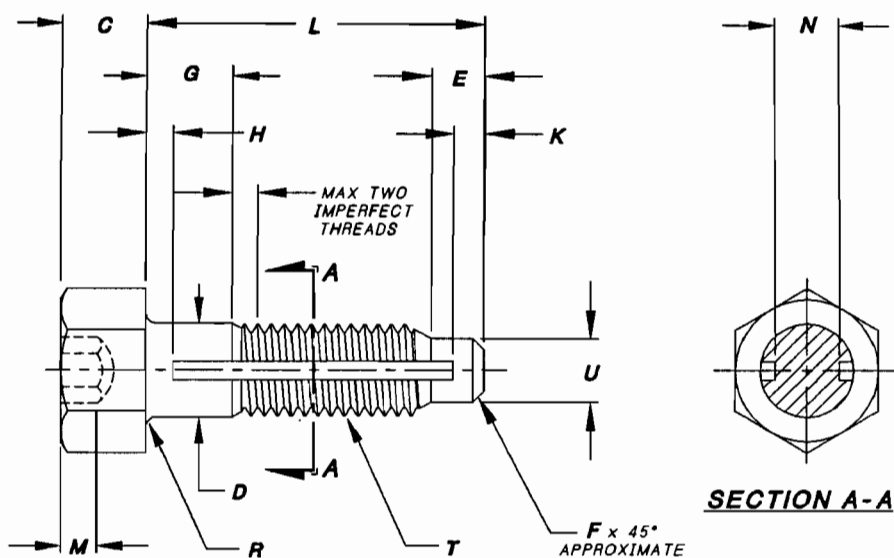
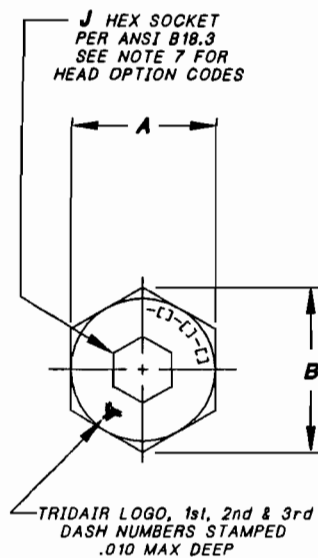


FIGURE 1 - HEX SOCKET RECESS

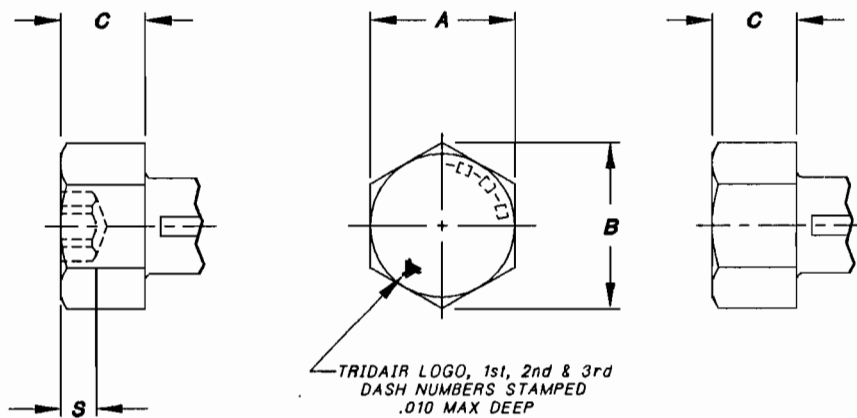
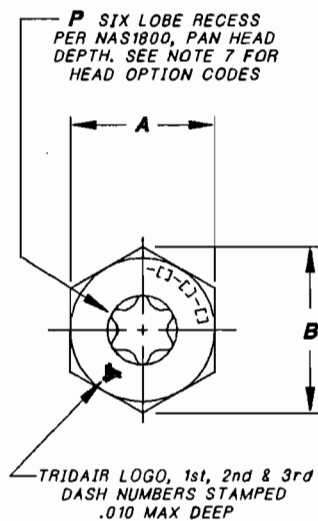


FIGURE 2 - TORX RECESS

FIGURE 3 - NO RECESS

TABLE 1

NORMAL THREAD SIZE	T THREAD PER MIL-S-8879	A HEX	B REF	C	D DIA	E MAX	F	H MAX	J	K	M MIN	N MIN
-4	.2500-2BUNJF-3A	.375 .367	.410	.250 .244	.2495 .2485	.100	.035	.050	.188	.040	.120	.162

TABLE 1 (CON'T)

NORMAL THREAD SIZE	T THREAD PER MIL-S-8879	P RECESS NUMBER	R RAD	S MIN	U MIN	ULTIMATE TENSILE STRENGTH MIN (CALCULATED)	ULTIMATE SHEAR STRENGTH MIN (CALCULATED)
-4	.2500-2BUNJF-3A	T30	.020 .010	.054	.202 .197	4,625 LBS	2,775 LBS

UNLESS OTHERWISE SPECIFIED:

TOLERANCE:  
DECIMALS:  
..XX ±.02  
.XXX ±.010  
ANGLE: ±2°

APPROVED DATE

13 SEP 01 *U.S.*

REV. LETTER AND DATE

~~10 SEP 01~~

DAF NUMBER

~~DAF 52775~~

INTERIM DOCUMENT REVISION

Rev.	Date	DAF #
1/R1	10/21/10	94301

**Fairchild** FAIRCHILD FASTENERS  
ENGINEERING CENTER  
3000 WEST LOMITA BOULEVARD  
TORRANCE, CA 90505

CAGE CODE 29372

TRIDAIR PRODUCT

SCREW, CAPTIVE, HEX HEAD,  
GRES, 160 KSI  
.2500 SIZE

CA22072-()-()-()

SHEET 1 OF 5

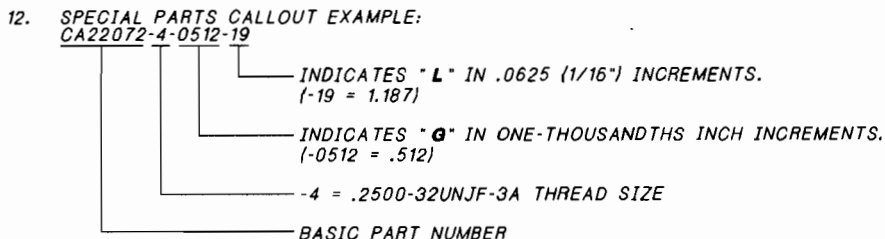
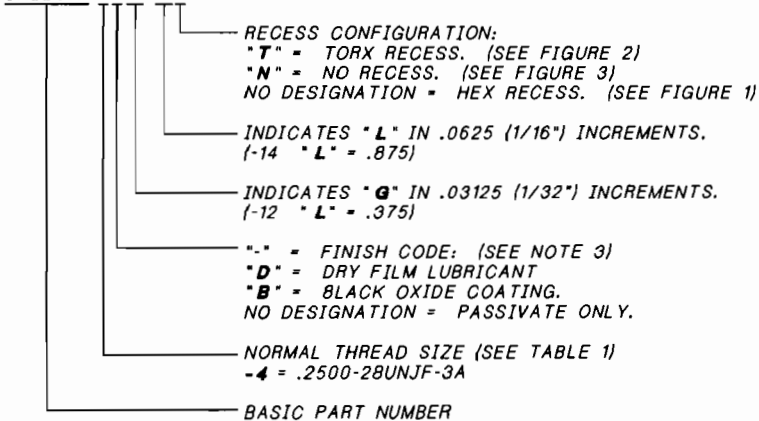
PROJECT NUMBER: 02-020

SCANNED

NOTES, UNLESS OTHERWISE SPECIFIED:

1. MATERIAL:
  - 1.1 A286 CRES PER AMS5731 OR AMS5737.
2. HEAT TREAT:
  - 2.1 160 KSI MINIMUM TENSILE.
3. FINISH:
  - 3.1 PASSIVATE PER AMS-QQ-P-35.
  - 3.2 OPTIONAL: DRY FILM LUBE PER AS5272, DESIGNATED BY LETTER "D" (DIMENSIONS APPLY BEFORE LUBE).
  - 3.3 OPTIONAL: BLACK OXIDE COATING PER MIL-DTL-13924, DESIGNATED BY LETTER "B".
4. THESE SCREWS ARE DESIGNED TO BE USED WITH CA21062-4R RETAINING RING TO CAPTIVATE TO PANEL.
5. PANEL PREPARATION PER FAIRCHILD'S CAL-STD-0260.
6. INSTALLATION PROCEDURE PER FAIRCHILD'S SALES DRAWING NUMBER CA21062-()()T10.

8. TOLERANCES, UNLESS OTHERWISE SPECIFIED: .XX .02, .XXX .010, ANGLES 2
9. MAGNETIC PERMEABILITY IS LESS THAN 2.0 (AIR = 1.0) FOR A FIELD STRENGTH OF H200 OERSTEDS. MAGNETIC PERMEABILITY INDICATOR PER ASTM A342.
10. LONGER GRIPS (IN 1/32" INCREMENTS) AND LONGER LENGTHS (IN 1/16" INCREMENTS) THAN ARE SHOWN IN TABLES 2 THRU 7 MAY BE ORDERED.
11. STANDARD PARTS CALLOUT EXAMPLES COVERING DASH NUMBERS SHOWN IN TABLES 2 THRU 7:  
CA22072-4D12-14T



PROJECT NUMBER: 02-020

UNLESS OTHERWISE SPECIFIED:	
TOLERANCE:	
DECIMALS:	
.XX	±.02
.XXX	±.010
ANGLE:	±2°
APPROVED DATE	13 SEP 01 W.S.
REV. LETTER AND DATE	
	<del>10 SEP 01</del>
DAF NUMBER	
	<del>DAF 52775</del>

INTERIM DOCUMENT REVISION		
Rev.	Date	DAF #
N/R1	10/21/10	94301

**Fairchild** FAIRCHILD FASTENERS  
 ENGINEERING CENTER  
 3000 WEST LOMITA BOULEVARD  
 TORRANCE, CA 90505

CAGE CODE **29372**  
 TRIDAIR PRODUCT

SCREW, CAPTIVE, HEX HEAD,  
 CRES, 160 KSI  
 .2500 SIZE

CA22072-()-()-()

SCANNED

TABLE 2

	G GRIP									L LENGTH
	.062	.094	.125	.156	.187	.218	.250	.281	.312	
.138-32 SIZE FIRST DASH NO. -06	-2-5									.312
	-2-7	-3-7	-4-7	-5-7	-6-7	-7-7	-8-7	-9-7	-10-7	.437
	-2-8	-3-8	-4-8	-5-8	-6-8	-7-8	-8-8	-9-8	-10-8	.500
	-2-9	-3-9	-4-9	-5-9	-6-9	-7-9	-8-9	-9-9	-10-9	.562
	-2-10	-3-10	-4-10	-5-10	-6-10	-7-10	-8-10	-9-10	-10-10	.625
	-2-11	-3-11	-4-11	-5-11	-6-11	-7-11	-8-11	-9-11	-10-11	.687
	-2-12	-3-12	-4-12	-5-12	-6-12	-7-12	-8-12	-9-12	-10-12	.750
	-2-13	-3-13	-4-13	-5-13	-6-13	-7-13	-8-13	-9-13	-10-13	.812
	-2-14	-3-14	-4-14	-5-14	-6-14	-7-14	-8-14	-9-14	-10-14	.875
	-2-15	-3-15	-4-15	-5-15	-6-15	-7-15	-8-15	-9-15	-10-15	.937
	-2-16	-3-16	-4-16	-5-16	-6-16	-7-16	-8-16	-9-16	-10-16	1.000
	-2-17	-3-17	-4-17	-5-17	-6-17	-7-17	-8-17	-9-17	-10-17	1.062
	-2-18	-3-18	-4-18	-5-18	-6-18	-7-18	-8-18	-9-18	-10-18	1.125
	-2-19	-3-19	-4-19	-5-19	-6-19	-7-19	-8-19	-9-19	-10-19	1.187
	-2-20	-3-20	-4-20	-5-20	-6-20	-7-20	-8-20	-9-20	-10-20	1.250
	-2-21	-3-21	-4-21	-5-21	-6-21	-7-21	-8-21	-9-21	-10-21	1.312
	-2-22	-3-22	-4-22	-5-22	-6-22	-7-22	-8-22	-9-22	-10-22	1.375
	-2-23	-3-23	-4-23	-5-23	-6-23	-7-23	-8-23	-9-23	-10-23	1.437
	-2-24	-3-24	-4-24	-5-24	-6-24	-7-24	-8-24	-9-24	-10-24	1.500
	-2-25	-3-25	-4-25	-5-25	-6-25	-7-25	-8-25	-9-25	-10-25	1.562
-2-26	-3-26	-4-26	-5-26	-6-26	-7-26	-8-26	-9-26	-10-26	1.625	
-2-27	-3-27	-4-27	-5-27	-6-27	-7-27	-8-27	-9-27	-10-27	1.687	
-2-28	-3-28	-4-28	-5-28	-6-28	-7-28	-8-28	-9-28	-10-28	1.750	

TABLE 3

	G GRIP									L LENGTH
	.062	.094	.125	.156	.187	.218	.250	.281	.312	
.164-32 SIZE FIRST DASH NO. -08	-2-7	-3-7	-4-7	-5-7	-6-7	-7-7	-8-7	-9-7	-10-7	.437
	-2-8	-3-8	-4-8	-5-8	-6-8	-7-8	-8-8	-9-8	-10-8	.500
	-2-9	-3-9	-4-9	-5-9	-6-9	-7-9	-8-9	-9-9	-10-9	.562
	-2-10	-3-10	-4-10	-5-10	-6-10	-7-10	-8-10	-9-10	-10-10	.625
	-2-11	-3-11	-4-11	-5-11	-6-11	-7-11	-8-11	-9-11	-10-11	.687
	-2-12	-3-12	-4-12	-5-12	-6-12	-7-12	-8-12	-9-12	-10-12	.750
	-2-13	-3-13	-4-13	-5-13	-6-13	-7-13	-8-13	-9-13	-10-13	.812
	-2-14	-3-14	-4-14	-5-14	-6-14	-7-14	-8-14	-9-14	-10-14	.875
	-2-15	-3-15	-4-15	-5-15	-6-15	-7-15	-8-15	-9-15	-10-15	.937
	-2-16	-3-16	-4-16	-5-16	-6-16	-7-16	-8-16	-9-16	-10-16	1.000
	-2-17	-3-17	-4-17	-5-17	-6-17	-7-17	-8-17	-9-17	-10-17	1.062
	-2-18	-3-18	-4-18	-5-18	-6-18	-7-18	-8-18	-9-18	-10-18	1.125
	-2-19	-3-19	-4-19	-5-19	-6-19	-7-19	-8-19	-9-19	-10-19	1.187
	-2-20	-3-20	-4-20	-5-20	-6-20	-7-20	-8-20	-9-20	-10-20	1.250
	-2-21	-3-21	-4-21	-5-21	-6-21	-7-21	-8-21	-9-21	-10-21	1.312
	-2-22	-3-22	-4-22	-5-22	-6-22	-7-22	-8-22	-9-22	-10-22	1.375
	-2-23	-3-23	-4-23	-5-23	-6-23	-7-23	-8-23	-9-23	-10-23	1.437
	-2-24	-3-24	-4-24	-5-24	-6-24	-7-24	-8-24	-9-24	-10-24	1.500
	-2-25	-3-25	-4-25	-5-25	-6-25	-7-25	-8-25	-9-25	-10-25	1.562
	-2-26	-3-26	-4-26	-5-26	-6-26	-7-26	-8-26	-9-26	-10-26	1.625
-2-27	-3-27	-4-27	-5-27	-6-27	-7-27	-8-27	-9-27	-10-27	1.687	
-2-28	-3-28	-4-28	-5-28	-6-28	-7-28	-8-28	-9-28	-10-28	1.750	

UNLESS OTHERWISE SPECIFIED:

TOLERANCE:  
DECIMALS:  
.XX ±.02  
.XXX ±.010  
ANGLE: ±2°

APPROVED DATE

13 SEP 01

REV. LETTER AND DATE

10 SEP 01

DAF NUMBER

DAF 52775

INTERIM DOCUMENT REVISION

Rev	Date	DAF #
N/R1	10/21/10	94301

**Fairchild** FAIRCHILD FASTENERS  
ENGINEERING CENTER  
3000 WEST LOMITA BOULEVARD  
TORRANCE, CA 90505

CAGE CODE 29372

TRIDAIR PRODUCT

SCREW, CAPTIVE, HEX HEAD,  
CRES, 160 KSI  
.2500 SIZE

CA22072-()-()-()

SHEET 3 OF 5

PROJECT NUMBER: 02-020

SCANNED

TABLE 4

	G GRIP									L LENGTH
	.062	.094	.125	.156	.187	.218	.250	.281	.312	
.190-32 SIZE FIRST DASH NO. -10	-2-7	-3-7	-4-7	-5-7	-6-7	-7-7	-8-7	-9-7		.437
	-2-8	-3-8	-4-8	-5-8	-6-8	-7-8	-8-8	-9-8	-10-8	.500
	-2-9	-3-9	-4-9	-5-9	-6-9	-7-9	-8-9	-9-9	-10-9	.562
	-2-10	-3-10	-4-10	-5-10	-6-10	-7-10	-8-10	-9-10	-10-10	.625
	-2-11	-3-11	-4-11	-5-11	-6-11	-7-11	-8-11	-9-11	-10-11	.687
	-2-12	-3-12	-4-12	-5-12	-6-12	-7-12	-8-12	-9-12	-10-12	.750
	-2-13	-3-13	-4-13	-5-13	-6-13	-7-13	-8-13	-9-13	-10-13	.812
	-2-14	-3-14	-4-14	-5-14	-6-14	-7-14	-8-14	-9-14	-10-14	.875
	-2-15	-3-15	-4-15	-5-15	-6-15	-7-15	-8-15	-9-15	-10-15	.937
	-2-16	-3-16	-4-16	-5-16	-6-16	-7-16	-8-16	-9-16	-10-16	1.000
	-2-17	-3-17	-4-17	-5-17	-6-17	-7-17	-8-17	-9-17	-10-17	1.062
	-2-18	-3-18	-4-18	-5-18	-6-18	-7-18	-8-18	-9-18	-10-18	1.125
	-2-19	-3-19	-4-19	-5-19	-6-19	-7-19	-8-19	-9-19	-10-19	1.187
	-2-20	-3-20	-4-20	-5-20	-6-20	-7-20	-8-20	-9-20	-10-20	1.250
	-2-21	-3-21	-4-21	-5-21	-6-21	-7-21	-8-21	-9-21	-10-21	1.312
	-2-22	-3-22	-4-22	-5-22	-6-22	-7-22	-8-22	-9-22	-10-22	1.375
	-2-23	-3-23	-4-23	-5-23	-6-23	-7-23	-8-23	-9-23	-10-23	1.437
	-2-24	-3-24	-4-24	-5-24	-6-24	-7-24	-8-24	-9-24	-10-24	1.500
	-2-25	-3-25	-4-25	-5-25	-6-25	-7-25	-8-25	-9-25	-10-25	1.562
	-2-26	-3-26	-4-26	-5-26	-6-26	-7-26	-8-26	-9-26	-10-26	1.625
-2-27	-3-27	-4-27	-5-27	-6-27	-7-27	-8-27	-9-27	-10-27	1.687	
-2-28	-3-28	-4-28	-5-28	-6-28	-7-28	-8-28	-9-28	-10-28	1.750	

TABLE 5

	G GRIP									L LENGTH
	.062	.094	.125	.156	.187	.218	.250	.281	.312	
.250-28 SIZE FIRST DASH NO. -4	-2-7	-3-7	-4-7	-5-7	-6-7	-7-7	-8-7	-9-7		.437
	-2-8	-3-8	-4-8	-5-8	-6-8	-7-8	-8-8	-9-8	-10-8	.500
	-2-9	-3-9	-4-9	-5-9	-6-9	-7-9	-8-9	-9-9	-10-9	.562
	-2-10	-3-10	-4-10	-5-10	-6-10	-7-10	-8-10	-9-10	-10-10	.625
	-2-11	-3-11	-4-11	-5-11	-6-11	-7-11	-8-11	-9-11	-10-11	.687
	-2-12	-3-12	-4-12	-5-12	-6-12	-7-12	-8-12	-9-12	-10-12	.750
	-2-13	-3-13	-4-13	-5-13	-6-13	-7-13	-8-13	-9-13	-10-13	.812
	-2-14	-3-14	-4-14	-5-14	-6-14	-7-14	-8-14	-9-14	-10-14	.875
	-2-15	-3-15	-4-15	-5-15	-6-15	-7-15	-8-15	-9-15	-10-15	.937
	-2-16	-3-16	-4-16	-5-16	-6-16	-7-16	-8-16	-9-16	-10-16	1.000
	-2-17	-3-17	-4-17	-5-17	-6-17	-7-17	-8-17	-9-17	-10-17	1.062
	-2-18	-3-18	-4-18	-5-18	-6-18	-7-18	-8-18	-9-18	-10-18	1.125
	-2-19	-3-19	-4-19	-5-19	-6-19	-7-19	-8-19	-9-19	-10-19	1.187
	-2-20	-3-20	-4-20	-5-20	-6-20	-7-20	-8-20	-9-20	-10-20	1.250
	-2-21	-3-21	-4-21	-5-21	-6-21	-7-21	-8-21	-9-21	-10-21	1.312
	-2-22	-3-22	-4-22	-5-22	-6-22	-7-22	-8-22	-9-22	-10-22	1.375
	-2-23	-3-23	-4-23	-5-23	-6-23	-7-23	-8-23	-9-23	-10-23	1.437
	-2-24	-3-24	-4-24	-5-24	-6-24	-7-24	-8-24	-9-24	-10-24	1.500
	-2-25	-3-25	-4-25	-5-25	-6-25	-7-25	-8-25	-9-25	-10-25	1.562
	-2-26	-3-26	-4-26	-5-26	-6-26	-7-26	-8-26	-9-26	-10-26	1.625
-2-27	-3-27	-4-27	-5-27	-6-27	-7-27	-8-27	-9-27	-10-27	1.687	
-2-28	-3-28	-4-28	-5-28	-6-28	-7-28	-8-28	-9-28	-10-28	1.750	

UNLESS OTHERWISE SPECIFIED:  
 TOLERANCE:  
 DECIMALS:  
 .XX ±.02  
 .XXX ±.010  
 ANGLE: ±2°

APPROVED DATE  
 13 SEP 01 *u.s.*

REV. LETTER AND DATE  
 10 SEP 01

DAF NUMBER  
 DAF 52775

**Fairchild** FAIRCHILD FASTENERS  
 ENGINEERING CENTER  
 3000 WEST LOMITA BOULEVARD  
 TORRANCE, CA 90505

SCREW, CAPTIVE, HEX HEAD,  
 CRES, 160 KSI  
 .2500 SIZE

INTERIM DOCUMENT REVISION		
Rev.	Date	DAF #
N/R1	10/21/10	94301

CAGE CODE 29372  
 TRIDAIR PRODUCT

CA22072-()-()-()

SCANNED

TABLE 6

	G GRIP									L LENGTH
	.062	.094	.125	.156	.187	.218	.250	.281	.312	
.3125-24 SIZE FIRST DASH NO. -5	-2-7	-3-7	-4-7	-5-7	-6-7	-7-7				.437
	-2-8	-3-8	-4-8	-5-8	-6-8	-7-8	-8-8	-9-8		.500
	-2-9	-3-9	-4-9	-5-9	-6-9	-7-9	-8-9	-9-9	-10-9	.562
	-2-10	-3-10	-4-10	-5-10	-6-10	-7-10	-8-10	-9-10	-10-10	.625
	-2-11	-3-11	-4-11	-5-11	-6-11	-7-11	-8-11	-9-11	-10-11	.687
	-2-12	-3-12	-4-12	-5-12	-6-12	-7-12	-8-12	-9-12	-10-12	.750
	-2-13	-3-13	-4-13	-5-13	-6-13	-7-13	-8-13	-9-13	-10-13	.812
	-2-14	-3-14	-4-14	-5-14	-6-14	-7-14	-8-14	-9-14	-10-14	.875
	-2-15	-3-15	-4-15	-5-15	-6-15	-7-15	-8-15	-9-15	-10-15	.937
	-2-16	-3-16	-4-16	-5-16	-6-16	-7-16	-8-16	-9-16	-10-16	1.000
	-2-17	-3-17	-4-17	-5-17	-6-17	-7-17	-8-17	-9-17	-10-17	1.062
	-2-18	-3-18	-4-18	-5-18	-6-18	-7-18	-8-18	-9-18	-10-18	1.125
	-2-19	-3-19	-4-19	-5-19	-6-19	-7-19	-8-19	-9-19	-10-19	1.187
	-2-20	-3-20	-4-20	-5-20	-6-20	-7-20	-8-20	-9-20	-10-20	1.250
	-2-21	-3-21	-4-21	-5-21	-6-21	-7-21	-8-21	-9-21	-10-21	1.312
	-2-22	-3-22	-4-22	-5-22	-6-22	-7-22	-8-22	-9-22	-10-22	1.375
	-2-23	-3-23	-4-23	-5-23	-6-23	-7-23	-8-23	-9-23	-10-23	1.437
	-2-24	-3-24	-4-24	-5-24	-6-24	-7-24	-8-24	-9-24	-10-24	1.500
	-2-25	-3-25	-4-25	-5-25	-6-25	-7-25	-8-25	-9-25	-10-25	1.562
	-2-26	-3-26	-4-26	-5-26	-6-26	-7-26	-8-26	-9-26	-10-26	1.625
	-2-27	-3-27	-4-27	-5-27	-6-27	-7-27	-8-27	-9-27	-10-27	1.687
	-2-28	-3-28	-4-28	-5-28	-6-28	-7-28	-8-28	-9-28	-10-28	1.750

TABLE 7

	G GRIP									L LENGTH
	.062	.094	.125	.156	.187	.218	.250	.281	.312	
.375-24 SIZE FIRST DASH NO. -6	-2-7	-3-7	-4-7	-5-7	-6-7	-7-7				.437
	-2-8	-3-8	-4-8	-5-8	-6-8	-7-8	-8-8	-9-8		.500
	-2-9	-3-9	-4-9	-5-9	-6-9	-7-9	-8-9	-9-9	-10-9	.562
	-2-10	-3-10	-4-10	-5-10	-6-10	-7-10	-8-10	-9-10	-10-10	.625
	-2-11	-3-11	-4-11	-5-11	-6-11	-7-11	-8-11	-9-11	-10-11	.687
	-2-12	-3-12	-4-12	-5-12	-6-12	-7-12	-8-12	-9-12	-10-12	.750
	-2-13	-3-13	-4-13	-5-13	-6-13	-7-13	-8-13	-9-13	-10-13	.812
	-2-14	-3-14	-4-14	-5-14	-6-14	-7-14	-8-14	-9-14	-10-14	.875
	-2-15	-3-15	-4-15	-5-15	-6-15	-7-15	-8-15	-9-15	-10-15	.937
	-2-16	-3-16	-4-16	-5-16	-6-16	-7-16	-8-16	-9-16	-10-16	1.000
	-2-17	-3-17	-4-17	-5-17	-6-17	-7-17	-8-17	-9-17	-10-17	1.062
	-2-18	-3-18	-4-18	-5-18	-6-18	-7-18	-8-18	-9-18	-10-18	1.125
	-2-19	-3-19	-4-19	-5-19	-6-19	-7-19	-8-19	-9-19	-10-19	1.187
	-2-20	-3-20	-4-20	-5-20	-6-20	-7-20	-8-20	-9-20	-10-20	1.250
	-2-21	-3-21	-4-21	-5-21	-6-21	-7-21	-8-21	-9-21	-10-21	1.312
	-2-22	-3-22	-4-22	-5-22	-6-22	-7-22	-8-22	-9-22	-10-22	1.375
	-2-23	-3-23	-4-23	-5-23	-6-23	-7-23	-8-23	-9-23	-10-23	1.437
	-2-24	-3-24	-4-24	-5-24	-6-24	-7-24	-8-24	-9-24	-10-24	1.500
	-2-25	-3-25	-4-25	-5-25	-6-25	-7-25	-8-25	-9-25	-10-25	1.562
	-2-26	-3-26	-4-26	-5-26	-6-26	-7-26	-8-26	-9-26	-10-26	1.625
	-2-27	-3-27	-4-27	-5-27	-6-27	-7-27	-8-27	-9-27	-10-27	1.687
	-2-28	-3-28	-4-28	-5-28	-6-28	-7-28	-8-28	-9-28	-10-28	1.750

UNLESS OTHERWISE SPECIFIED:  
 TOLERANCE:  
 DECIMALS:  
 .XX ±.02  
 .XXX ±.010  
 ANGLE: ±2°

APPROVED DATE  
 13 SEP 01 u.s.

REV. LETTER AND DATE  
 13 SEP 01

DAF NUMBER  
 DAF 52775

PROJECT NUMBER: 02-020

**Fairchild** FAIRCHILD FASTENERS  
 ENGINEERING CENTER  
 3000 WEST LOMITA BOULEVARD  
 TORRANCE, CA 90505

SCREW, CAPTIVE, HEX HEAD,  
 CRES, 160 KSI  
 .2500 SIZE

INTERIM DOCUMENT REVISION		
Rev.	Date	DAF #
N/R	10/21/10	94301

CAGE CODE 29372  
 TRIDAIR PRODUCT

CA22072-()-()-()

SCANNED