

MANUFACTURE OF THE PROPRIETARY PARTS SHOWN HERE WITHOUT WRITTEN CONSENT OF ARCONIC FASTENING SYSTEMS AND RINGS IS ABSOLUTELY PROHIBITED.

THIS DRAWING EMBODIES A CONFIDENTIAL, PROPRIETARY DESIGN & ALL DESIGN, MANUFACTURING PRODUCTION, USE & SALE RIGHTS REGARDING SAME ARE EXPRESSLY RESERVED.

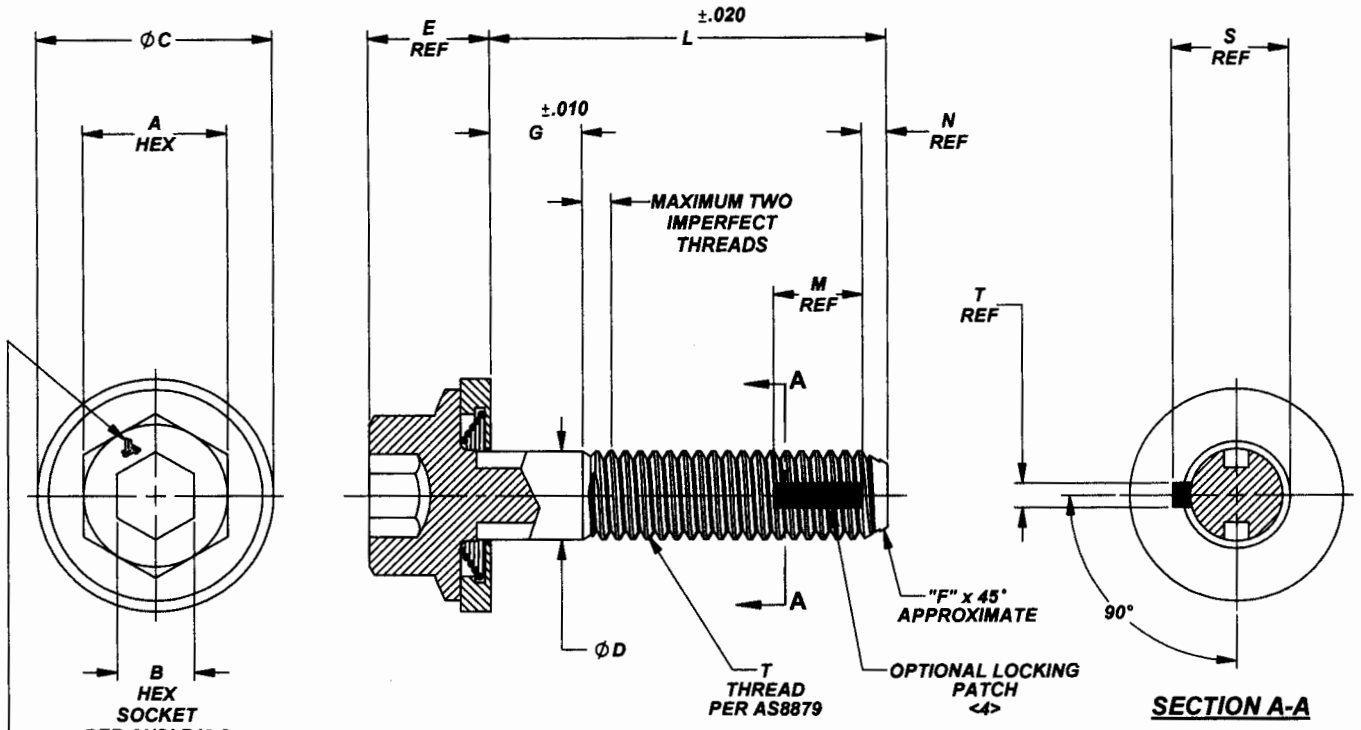


FIGURE 1 - SCREW ASSEMBLY

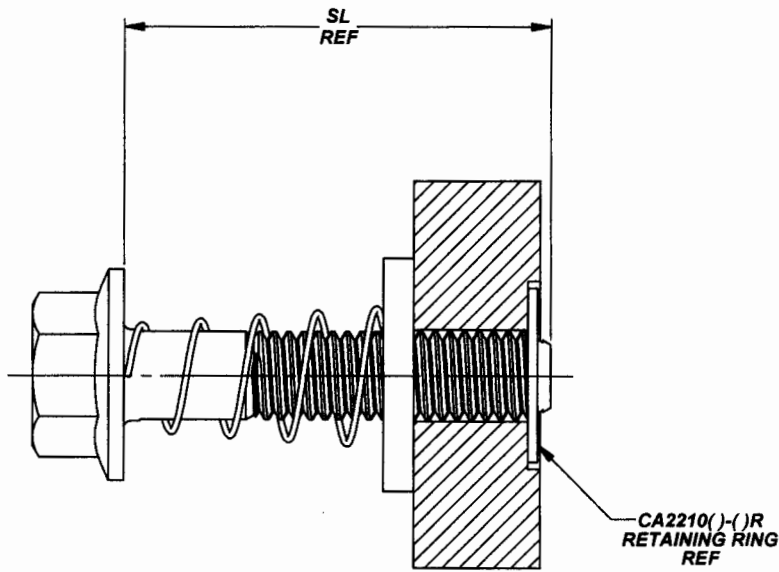


FIGURE 2 - INSTALLED AND RETRACTED

PROJECT NUMBER: 97-127A

APPROVED DATE 29 MAR 95
REV. LETTER AND DATE F 9 FEB 18
DAF NUMBER DAF 116507

CURRENT DESIGN ACTIVITY:



ARCONIC
Fastening Systems and Rings

TRIDAIR PRODUCTS
3000 W. LOMITA BLVD.
TORRANCE, CA. 90505

TITLE: **CAPTIVE SCREW ASSEMBLIES
SELF-RETRACTING, "CRIMPING" TYPE
HEX HEAD, HEX RECESS
CRES, 160 KSI**

UNLESS OTHERWISE SPECIFIED
DIMENSIONS ARE IN INCHES &
ASME Y14.5M TOLERANCES:

ANGLES = ±3°
DECIMALS XX = ±.02
XXX = ±.010

CURRENT DESIGN ACTIVITY:

CAGE CODE: 29372

SALES DRAWING NO.

CA22035-()-()-()

SHEET 1 OF 3

S-3754

MANUFACTURE OF THE PROPRIETARY PARTS SHOWN HERE WITHOUT WRITTEN CONSENT OF ARCONIC FASTENING SYSTEMS AND RINGS IS ABSOLUTELY PROHIBITED.

THIS DRAWING EMBODIES A CONFIDENTIAL, PROPRIETARY DESIGN & ALL DESIGN, MANUFACTURING PRODUCTION, USE & SALE RIGHTS REGARDING SAME ARE EXPRESSLY RESERVED.

TABLE 1

FIRST DASH NUMBER	T THREAD SIZE	A HEX	B HEX NOM.	ØC	ØD	E	F	M	N	S	T	ULTIMATE TENSILE STRENGTH MINIMUM (CALCULATED)	ULTIMATE SHEAR STRENGTH MINIMUM (CALCULATED)
-10	.1900-32UNJF-3A	.312 .305	.156	.437	.1895 .1890	.250	.030	.250 .187	.075 .045	.193 .183	.050	2,425 LBS.	1,450 LBS.
-4	.2500-28UNJF-3A	.375 .367	.188	.500	.2495 .2490	.310	.035	.350 .250	.090 .050	.253 .243	.055	4,625 LBS.	2,775 LBS.
-5	.3125-24UNJF-3A	.500 .489	.250	.625	.3120 .3115	.370	.040	.400 .225	.100 .060	.315 .305	.060	7,400 LBS.	4,425 LBS.

TABLE 2

.1900-32UNJF SIZE FIRST DASH NUMBER -10											L LENGTH	SL SCREW LENGTH
G GRIP												
.062	.094	.125	.156	.187	.218	.250	.281	.312				
-2-9	-3-9	-4-9	-5-9	-6-9	-7-9	-8-9	-9-9	-10-9		.562	.625	
-2-10	-3-10	-4-10	-5-10	-6-10	-7-10	-8-10	-9-10	-10-10		.625	.687	
-2-11	-3-11	-4-11	-5-11	-6-11	-7-11	-8-11	-9-11	-10-11		.687	.750	
-2-12	-3-12	-4-12	-5-12	-6-12	-7-12	-8-12	-9-12	-10-12		.750	.812	
-2-13	-3-13	-4-13	-5-13	-6-13	-7-13	-8-13	-9-13	-10-13		.812	.875	
-2-14	-3-14	-4-14	-5-14	-6-14	-7-14	-8-14	-9-14	-10-14		.875	.937	
-2-15	-3-15	-4-15	-5-15	-6-15	-7-15	-8-15	-9-15	-10-15		.937	1.000	
-2-16	-3-16	-4-16	-5-16	-6-16	-7-16	-8-16	-9-16	-10-16		1.000	1.062	
-2-17	-3-17	-4-17	-5-17	-6-17	-7-17	-8-17	-9-17	-10-17		1.062	1.125	
-2-18	-3-18	-4-18	-5-18	-6-18	-7-18	-8-18	-9-18	-10-18		1.125	1.187	

TABLE 3

.2500-28UNJF SIZE FIRST DASH NUMBER -4											L LENGTH	SL SCREW LENGTH
G GRIP												
.062	.094	.125	.156	.187	.218	.250	.281	.312				
-2-10	-3-10	-4-10	-5-10	-6-10	-7-10	-8-10	-9-10	-10-10		.625	.687	
-2-11	-3-11	-4-11	-5-11	-6-11	-7-11	-8-11	-9-11	-10-11		.687	.750	
-2-12	-3-12	-4-12	-5-12	-6-12	-7-12	-8-12	-9-12	-10-12		.750	.812	
-2-13	-3-13	-4-13	-5-13	-6-13	-7-13	-8-13	-9-13	-10-13		.812	.875	
-2-14	-3-14	-4-14	-5-14	-6-14	-7-14	-8-14	-9-14	-10-14		.875	.937	
-2-15	-3-15	-4-15	-5-15	-6-15	-7-15	-8-15	-9-15	-10-15		.937	1.000	
-2-16	-3-16	-4-16	-5-16	-6-16	-7-16	-8-16	-9-16	-10-16		1.000	1.062	
-2-17	-3-17	-4-17	-5-17	-6-17	-7-17	-8-17	-9-17	-10-17		1.062	1.125	
-2-18	-3-18	-4-18	-5-18	-6-18	-7-18	-8-18	-9-18	-10-18		1.125	1.187	

TABLE 4

.3125-24UNJF SIZE FIRST DASH NUMBER -5											L LENGTH	SL SCREW LENGTH
G GRIP												
.062	.094	.125	.156	.187	.218	.250	.281	.312				
-2-10	-3-10	-4-10	-5-10	-6-10	-7-10	-8-10	-9-10	-10-10		.625	.687	
-2-11	-3-11	-4-11	-5-11	-6-11	-7-11	-8-11	-9-11	-10-11		.687	.750	
-2-12	-3-12	-4-12	-5-12	-6-12	-7-12	-8-12	-9-12	-10-12		.750	.812	
-2-13	-3-13	-4-13	-5-13	-6-13	-7-13	-8-13	-9-13	-10-13		.812	.875	
-2-14	-3-14	-4-14	-5-14	-6-14	-7-14	-8-14	-9-14	-10-14		.875	.937	
-2-15	-3-15	-4-15	-5-15	-6-15	-7-15	-8-15	-9-15	-10-15		.937	1.000	
-2-16	-3-16	-4-16	-5-16	-6-16	-7-16	-8-16	-9-16	-10-16		1.000	1.062	
-2-17	-3-17	-4-17	-5-17	-6-17	-7-17	-8-17	-9-17	-10-17		1.062	1.125	
-2-18	-3-18	-4-18	-5-18	-6-18	-7-18	-8-18	-9-18	-10-18		1.125	1.187	

PROJECT NUMBER: 97-127A

APPROVED DATE
29 MAR 95

REV. LETTER AND DATE
F 9 FEB 18

DAF NUMBER
DAF 116507

CURRENT DESIGN ACTIVITY:



ARCONIC

Fastening Systems and Rings

TRIDAIR PRODUCTS
3000 W. LOMITA BLVD.
TORRANCE, CA. 90605

TITLE: CAPTIVE SCREW ASSEMBLIES
SELF-RETRACTING, "CRIMPING" TYPE
HEX HEAD, HEX RECESS
CRES, 160 KSI

UNLESS OTHERWISE SPECIFIED
DIMENSIONS ARE IN INCHES &
ASME Y14.5M TOLERANCES:

ANGLES
DECIMALS

= .3"
.XX = .02
.XXX = .010

CURRENT DESIGN ACTIVITY:

CAGE CODE: 29372

SALES DRAWING NO.
CA22035-()-()-()

SHEET 2 OF 3

S43754

THIS DRAWING EMBODIES A CONFIDENTIAL, PROPRIETARY DESIGN & ALL DESIGN, MANUFACTURING PRODUCTION, USE & SALE RIGHTS REGARDING SAME ARE EXPRESSLY RESERVED.

NOTES; UNLESS OTHERWISE SPECIFIED:

1. MATERIAL:

- 1.1 **SCREW:** A286 CRES PER AMS5731, AMSS5737.
- 1.2 **HOUSING:** 18-8 TYPE 300 SERIES CRES PER AMS5640, ASTM-A555, ASTM-A581.
- 1.3 **SPRING:** 302 CRES PER ASTM-A313.

2. HEAT TREAT:

- 2.1 **SCREW ONLY:** 180,000 PSI MINIMUM UTS.

3. FINISH:

- 3.1 **ASSEMBLY:** PASSIVATED PER AMS2700.

<4> OPTIONAL:

- 4.1 **TYPE "L" (LOCKING PATCH) SELF-LOCKING ELEMENT PER MIL-DTL-18240. SEE NOTE 9 FOR PART CALLOUT EXAMPLE.**

- 5. **SCREW ASSEMBLIES TO BE USED WITH CA2210()-()-R RETAINING RINGS.**

6. PANEL PREPARATION:

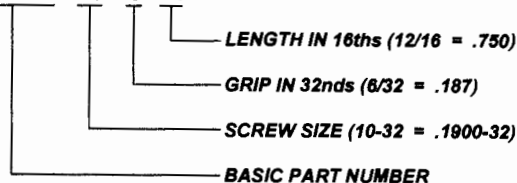
- 6.1 **REFER TO CAL-STD-0260 DRAWING. EXCEPT THRU HOLE DIAMETER SHOULD BE :**
 - .193 MINIMUM FOR -10
 - .253 MINIMUM FOR -4
 - .315 MINIMUM FOR -5

- 7. **INSTALLATION: REFER TO CA2210T()-() DRAWING.**

- 8. **LONGER LENGTHS (IN .0625 INCREMENTS) AND GRIPS (IN .03125 INCREMENTS) THAN ARE SHOWN IN TABLES 2, 3, AND 4 MAY BE ORDERED. CONSULT WITH ALCOA FASTENING SYSTEMS ENGINEERING FOR DESIGN LIMITATIONS.**

9. PART CALLOUT EXAMPLE:

9.1 CA22035 - 10 - 6 - 12



9.2 CA22035 - 10 L - 6 - 12



9.3 CA22035 - 10 - 6 - 12 ()

SUFFIX HERE DESIGNATES THE FOLLOWING:

- R - SCREW ASSEMBLY WITH A PASSIVATED 17-7PH CA2210-10R RETAINING RING
 - RC - SCREW ASSEMBLY WITH A CADMIUM PLATED 17-7PH CA2210C-10R RETAINING RING
 - RA - SCREW ASSEMBLY WITH A PASSIVATED A286 CA2210A-10R RETAINING RING
 - RAC - SCREW ASSEMBLY WITH A CADMIUM PLATED A286 CA2210AC-10R RETAINING RING
- PACKAGED TOGETHER AS A KIT IN EQUAL QUANTITIES IN A COMMON CONTAINER

PROJECT NUMBER: 97-127A

APPROVED DATE 29 MAR 95
REV. LETTER AND DATE F 9 FEB 18
DAF NUMBER DAF 116507

CURRENT DESIGN ACTIVITY:



ARCONIC
Fastening Systems and Rings

TRIDAIR PRODUCTS
3000 W. LOMITA BLVD.
TORRANCE, CA. 90805

TITLE: CAPTIVE SCREW ASSEMBLIES
SELF-RETRACTING, "CRIMPING" TYPE
HEX HEAD, HEX RECESS
CRES, 160 KSI

UNLESS OTHERWISE SPECIFIED
DIMENSIONS ARE IN INCHES &
ASME Y14.5M TOLERANCES:

ANGLES DECIMALS .XX = ±.02 .XXX = ±.010

CURRENT DESIGN ACTIVITY:

CAGE CODE: 29372

SALES DRAWING NO.
CA22035-()-()-()

SHEET 3 OF 3

S43754