

Voi-Shan • Tridair • Screwcorp

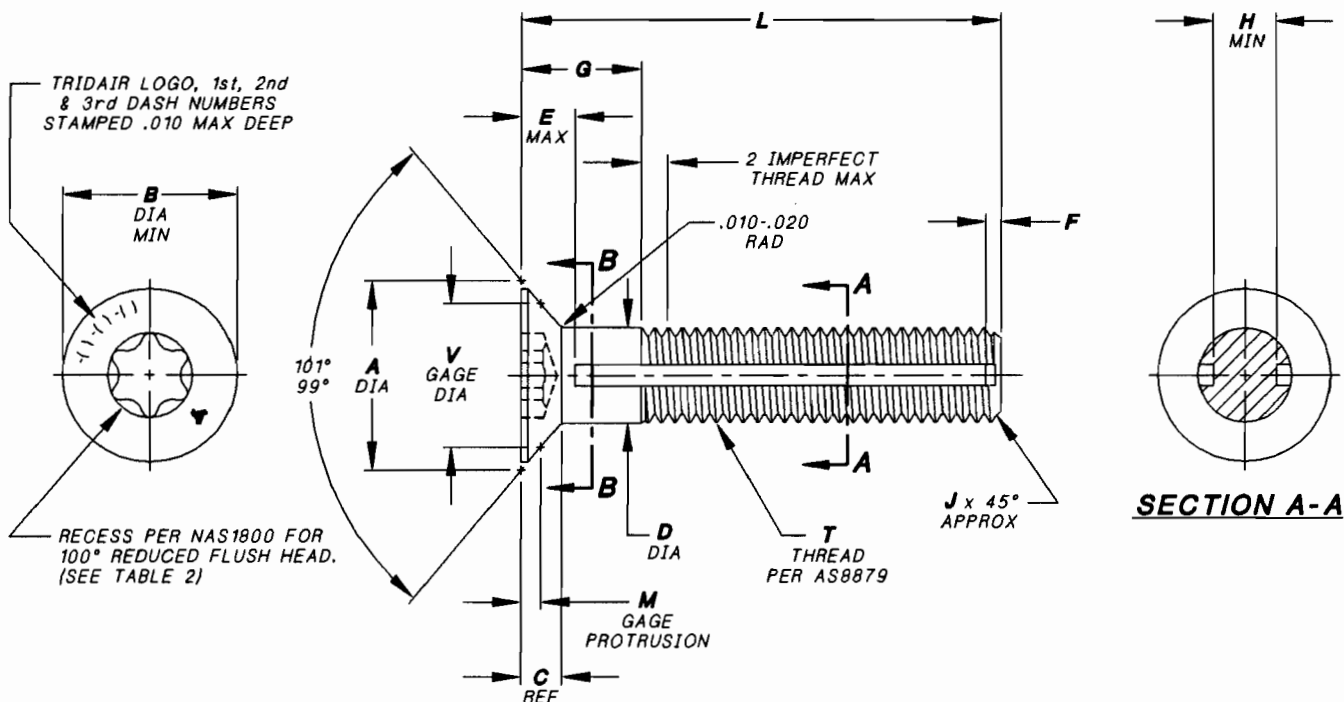


TABLE 1

NOMINAL THREAD SIZE	T THREAD PER AS8879	A DIA <12>	B DIA MIN	C REF <12>	D DIA	E MAX	F	J	H MIN	M GAGE PROT.	V GAGE DIA
-3	.1900-32UNJF-3A	.303 .294	.280	.049	.1895 .1885	.100	.040	.030	.108	.0252 .0206	.2441 .2439
-4	.2500-28UNJF-3A	.398 .389	.357	.063	.2495 .2485	.140	.040	.035	.162	.0285 .0237	.3314 .3312
-5	.3125-24UNJF-3A	.477 .468	.448	.070	.3120 .3115	.165	.050	.040	.205	.0444 .0392	.3731 .3729
-6	.3750-24UNJF-3A	.565 .556	.531	.081	.3745 .3740	.195	.050	.040	.268	.0503 .0447	.4475 .4473

TABLE 2

NOMINAL THREAD SIZE	RECOMMENDED SEATING TORQUE, INCH-LBS	ULTIMATE TENSILE STRENGTH MIN (CALCULATED)	ULTIMATE SINGLE SHEAR STRENGTH MIN ACROSS A-A (CALCULATED)	ULTIMATE SINGLE SHEAR STRENGTH MIN ACROSS B-B (CALCULATED) <11>	NAS1800 RECESS		
					RECESS NO.	DEPTH	TORQUE IN-LBS MIN
-3	36 40	1,700 LBS	1,450 LBS	1,950 LBS	T20	.045 .034	TBD *
-4	60 70	3,700 LBS	2,775 LBS	3,580 LBS	T20	.055 .044	TBD *
-5	120 130	5,000 LBS	4,425 LBS	5,650 LBS	T30	.060 .049	TBD *
-6	180 200	7,200 LBS	7,300 LBS	8,310 LBS	T30	.065 .054	TBD *

* TO BE DETERMINED

UNLESS OTHERWISE SPECIFIED:

TOLERANCE:
DECIMALS:
.XX ±.02
.XXX ±.010
ANGLE: ±2°

INTERIM DOCUMENT REVISION

Rev.	Date	DAF #
E1	10/21/10	94 301

SCANNED

PROJECT NUMBERS: 95-119 & 95-171

APPROVED DATE	27 MAR 95 <i>US</i>
REV. LETTER AND DATE	E 10 APR 00
DAF NUMBER	DAF 47625 <i>CA</i>

Fairchild FAIRCHILD FASTENERS
ENGINEERING CENTER
3000 WEST LOMITA BOULEVARD
TORRANCE, CA 90505

CAPTIVE SCREW
100° REDUCED FLUSH HEAD
6 LOBE RECESS,
A286 CRES, 180 KSI

CAGE CODE **29372**
TRIDAIR PRODUCT

CA22033-()-()-()

SHEET 1 OF 3

Voi-Shan • Tridair • Screwcorp

TABLE 3

	G GRIP						L LENGTH
	.125	.156	.187	.218	.250	.281	
.1800-32 SIZE FIRST DASH NUMBER -3	-4-7	-5-7	-6-7	-7-7	-8-7		.437
	-4-8	-5-8	-6-8	-7-8	-8-8	-9-8	.500
	-4-9	-5-9	-6-9	-7-9	-8-9	-9-9	.562
	-4-10	-5-10	-6-10	-7-10	-8-10	-9-10	.625
	-4-11	-5-11	-6-11	-7-11	-8-11	-9-11	.687
	-4-12	-5-12	-6-12	-7-12	-8-12	-9-12	.750
	-4-13	-5-13	-6-13	-7-13	-8-13	-9-13	.812
	-4-14	-5-14	-6-14	-7-14	-8-14	-9-14	.875
	-4-15	-5-15	-6-15	-7-15	-8-15	-9-15	.937
	-4-16	-5-16	-6-16	-7-16	-8-16	-9-16	1.000
	-4-17	-5-17	-6-17	-7-17	-8-17	-9-17	1.062
	-4-18	-5-18	-6-18	-7-18	-8-18	-9-18	1.125
	-4-19	-5-19	-6-19	-7-19	-8-19	-9-19	1.187
	-4-20	-5-20	-6-20	-7-20	-8-20	-9-20	1.250
	-4-21	-5-21	-6-21	-7-21	-8-21	-9-21	1.312
	-4-22	-5-22	-6-22	-7-22	-8-22	-9-22	1.375
	-4-23	-5-23	-6-23	-7-23	-8-23	-9-23	1.437
	-4-24	-5-24	-6-24	-7-24	-8-24	-9-24	1.500
	-4-25	-5-25	-6-25	-7-25	-8-25	-9-25	1.562
	-4-26	-5-26	-6-26	-7-26	-8-26	-9-26	1.625
-4-27	-5-27	-6-27	-7-27	-8-27	-9-27	1.687	
-4-28	-5-28	-6-28	-7-28	-8-28	-9-28	1.750	

TABLE 4

	G GRIP						L LENGTH
	.156	.187	.218	.250	.281	.312	
.2600-28 SIZE FIRST DASH NUMBER -4	-5-7	-6-7	-7-7	-8-7			.437
	-5-8	-6-8	-7-8	-8-8	-9-8		.500
	-5-9	-6-9	-7-9	-8-9	-9-9	-10-9	.562
	-5-10	-6-10	-7-10	-8-10	-9-10	-10-10	.625
	-5-11	-6-11	-7-11	-8-11	-9-11	-10-11	.687
	-5-12	-6-12	-7-12	-8-12	-9-12	-10-12	.750
	-5-13	-6-13	-7-13	-8-13	-9-13	-10-13	.812
	-5-14	-6-14	-7-14	-8-14	-9-14	-10-14	.875
	-5-15	-6-15	-7-15	-8-15	-9-15	-10-15	.937
	-5-16	-6-16	-7-16	-8-16	-9-16	-10-16	1.000
	-5-17	-6-17	-7-17	-8-17	-9-17	-10-17	1.062
	-5-18	-6-18	-7-18	-8-18	-9-18	-10-18	1.125
	-5-19	-6-19	-7-19	-8-19	-9-19	-10-19	1.187
	-5-20	-6-20	-7-20	-8-20	-9-20	-10-20	1.250
	-5-21	-6-21	-7-21	-8-21	-9-21	-10-21	1.312
	-5-22	-6-22	-7-22	-8-22	-9-22	-10-22	1.375
	-5-23	-6-23	-7-23	-8-23	-9-23	-10-23	1.437
	-5-24	-6-24	-7-24	-8-24	-9-24	-10-24	1.500
	-5-25	-6-25	-7-25	-8-25	-9-25	-10-25	1.562
	-5-26	-6-26	-7-26	-8-26	-9-26	-10-26	1.625
-5-27	-6-27	-7-27	-8-27	-9-27	-10-27	1.687	
-5-28	-6-28	-7-28	-8-28	-9-28	-10-28	1.750	

INTERIM DOCUMENT REVISION	
Rev.	DAF #
E1	94301
Date	
10/21/10	

SCANNED

PROJECT NUMBERS: 95-119 & 95-171

APPROVED DATE 27 MAR 95 <i>U.S.</i>	Fairchild FAIRCHILD FASTENERS ENGINEERING CENTER 3000 WEST LOMITA BOULEVARD TORRANCE, CA 90505	CAGE CODE 29372 TRIDAIR PRODUCT
REV. LETTER AND DATE E 10 APR 00		CAPTIVE SCREW 100° REDUCED FLUSH HEAD 6 LOBE RECESS, A288 CRES, 180 KSI
DAF NUMBER DAF 47625		

TABLE 5

	G GRIP					L LENGTH
	.187	.218	.250	.281	.312	
-6-7	-7-7				.437	
-6-8	-7-8	-8-8	-9-8		.500	
-6-9	-7-9	-8-9	-9-9	-10-9	.562	
-6-10	-7-10	-8-10	-9-10	-10-10	.625	
-6-11	-7-11	-8-11	-9-11	-10-11	.687	
-6-12	-7-12	-8-12	-9-12	-10-12	.750	
-6-13	-7-13	-8-13	-9-13	-10-13	.812	
-6-14	-7-14	-8-14	-9-14	-10-14	.875	
-6-15	-7-15	-8-15	-9-15	-10-15	.937	
-6-16	-7-16	-8-16	-9-16	-10-16	1.000	
-6-17	-7-17	-8-17	-9-17	-10-17	1.062	
-6-18	-7-18	-8-18	-9-18	-10-18	1.125	
-6-19	-7-19	-8-19	-9-19	-10-19	1.187	
-6-20	-7-20	-8-20	-9-20	-10-20	1.250	
-6-21	-7-21	-8-21	-9-21	-10-21	1.312	
-6-22	-7-22	-8-22	-9-22	-10-22	1.375	
-6-23	-7-23	-8-23	-9-23	-10-23	1.437	
-6-24	-7-24	-8-24	-9-24	-10-24	1.500	
-6-25	-7-25	-8-25	-9-25	-10-25	1.562	
-6-26	-7-26	-8-26	-9-26	-10-26	1.625	
-6-27	-7-27	-8-27	-9-27	-10-27	1.687	
-6-28	-7-28	-8-28	-9-28	-10-28	1.750	

TABLE 6

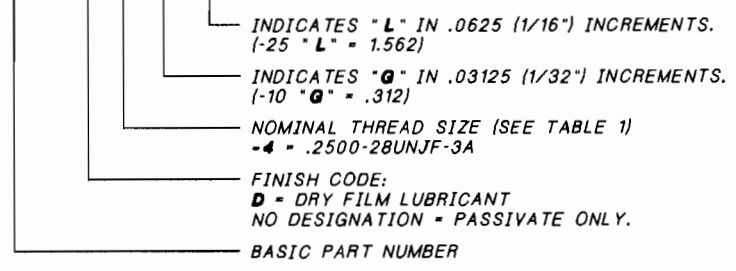
	G GRIP				L LENGTH
	.218	.250	.281	.312	
-7-7				.437	
-7-8	-8-8	-9-8		.500	
-7-9	-8-9	-9-9	-10-9	.562	
-7-10	-8-10	-9-10	-10-10	.625	
-7-11	-8-11	-9-11	-10-11	.687	
-7-12	-8-12	-9-12	-10-12	.750	
-7-13	-8-13	-9-13	-10-13	.812	
-7-14	-8-14	-9-14	-10-14	.875	
-7-15	-8-15	-9-15	-10-15	.937	
-7-16	-8-16	-9-16	-10-16	1.000	
-7-17	-8-17	-9-17	-10-17	1.062	
-7-18	-8-18	-9-18	-10-18	1.125	
-7-19	-8-19	-9-19	-10-19	1.187	
-7-20	-8-20	-9-20	-10-20	1.250	
-7-21	-8-21	-9-21	-10-21	1.312	
-7-22	-8-22	-9-22	-10-22	1.375	
-7-23	-8-23	-9-23	-10-23	1.437	
-7-24	-8-24	-9-24	-10-24	1.500	
-7-25	-8-25	-9-25	-10-25	1.562	
-7-26	-8-26	-9-26	-10-26	1.625	
-7-27	-8-27	-9-27	-10-27	1.687	
-7-28	-8-28	-9-28	-10-28	1.750	

NOTES, UNLESS OTHERWISE SPECIFIED:

1. MATERIAL:
 - 1.1 A286 CRES PER AMS5731 OR AMS5737.
2. HEAT TREAT:
 - 2.1 160 KSI MINIMUM TENSILE.
3. FINISH:
 - 3.1 PASSIVATE PER AMS-QQ-P-35.
 - 3.2 DRY FILM LUBRICANT PER AS5272, TYPE I, DESIGNATED BY LETTER "D".
4. THESE SCREWS ARE DESIGNED TO BE USED WITH CA2210-() IR RETAINING RING TO CAPTIVATE TO PANEL.
5. PANEL PREPARATION PER FAIRCHILD'S CAL-STD-0260.
6. INSTALLATION PROCEDURE PER FAIRCHILD'S SALES DRAWING NUMBER CA2210T-().

8. MAGNETIC PERMEABILITY IS LESS THAN 2.0 (AIR = 1.0) FOR A FIELD STRENGTH OF H200 OERSTEDS. MAGNETIC PERMEABILITY INDICATOR PER ASTM A342.
9. LONGER GRIPS (IN 1/32" INCREMENTS) AND LONGER LENGTHS (IN 1/16" INCREMENTS) THAN ARE SHOWN IN TABLES 3 THRU 6 MAY BE ORDERED.
10. PART CALLOUT EXAMPLE:

CA22033D-4-10-25



INDICATES "L" IN .0625 (1/16") INCREMENTS.
 (-25 "L" = 1.562)
 INDICATES "G" IN .03125 (1/32") INCREMENTS.
 (-10 "G" = .312)
 NOMINAL THREAD SIZE (SEE TABLE 1)
 -4 = .2500-28UNJF-3A
 FINISH CODE:
 D = DRY FILM LUBRICANT
 NO DESIGNATION = PASSIVATE ONLY.
 BASIC PART NUMBER

INTERIM DOCUMENT REVISION		
Rev.	Date	DAF #
E1	10/21/10	94301

SCANNED

- <11> APPLIES TO PARTS GRIP LENGTHS ("G") OF 2-TIMES "D" DIAMETER AND LONGER.
- <12> "A" DIMENSION IS APPLICABLE AND COMPATIBLE WITH GAGE PROTRUSION LIMITS. "C" IS INCLUDED FOR ENGINEERING REFERENCE ONLY AND IS NOT TO BE USED FOR INSPECTION. PROTRUSION LIMITS MAY BE USED TO VERIFY BASIC HEAD GEOMETRY, HOWEVER, COMPARATOR READINGS OR SIMILAR METHOD SHALL BE USED TO VERIFY "A" LIMITS IN CASE OF CONFLICTS.

PROJECT NUMBERS: 95-119 & 95-171

APPROVED DATE 27 MAR 95 <i>U.S.</i>	FAIRCHILD FASTENERS ENGINEERING CENTER 3000 WEST LOMITA BOULEVARD TORRANCE, CA 90505	CAGE CODE 29372 TRIDAIR PRODUCT
REV. LETTER AND DATE E 13 APR 00		CAPTIVE SCREW 100° REDUCED FLUSH HEAD 6 LOBE RECESS, A286 CRES, 160 KSI
DAF NUMBER DAF 47929 <i>GA</i>		SHEET 3 OF 3