

Voi-Shan · Tridair · Screwcorp

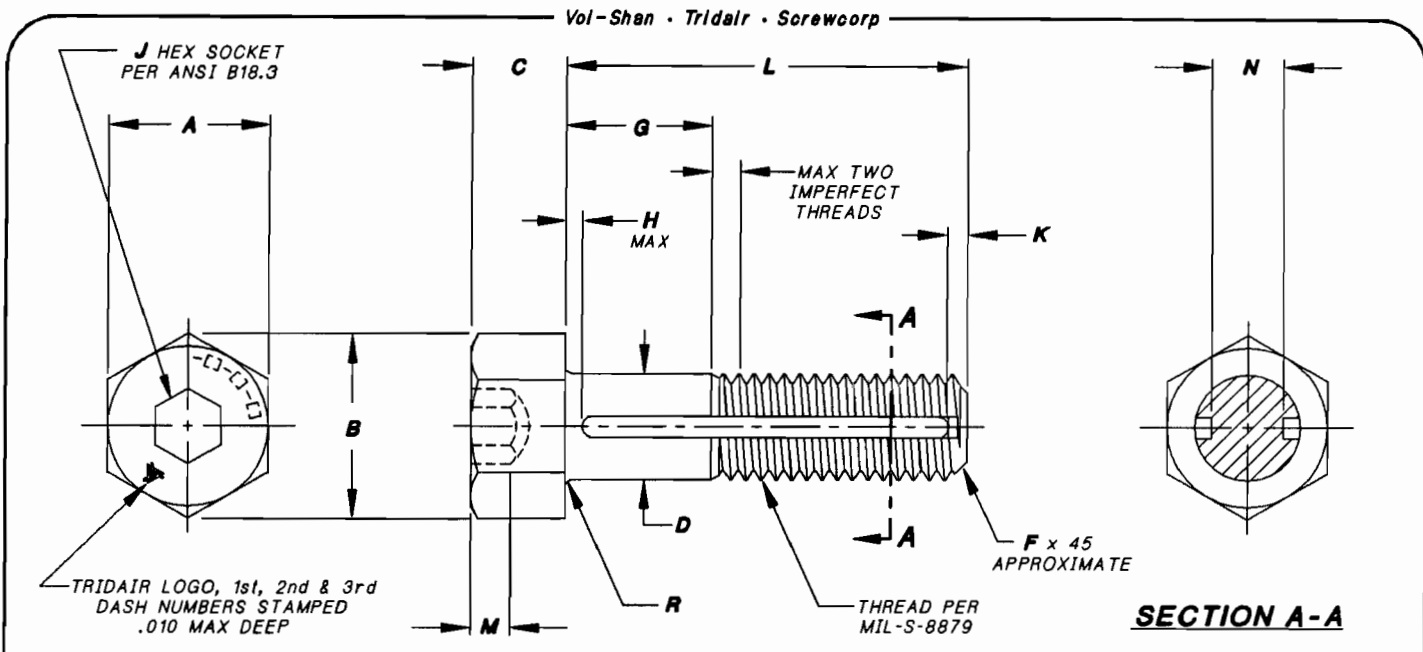


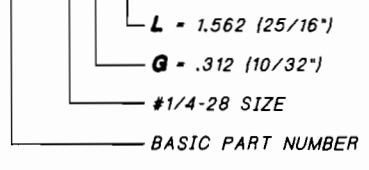
TABLE 1

FIRST DASH NUMBER	THREAD SIZE	A HEX	B REF	C	D DIA	F	H MAX	J	K	M MIN	N MIN	R RAD	ULTIMATE TENSILE STRENGTH MIN (CALCULATED)
-10	.1900-32UNJF-3A	.312 .305	.348	.190 .185	.1895 .1885	.030	.050	.156	.040	.090	.108	.020 .010	2,425 LBS
-4	.2500-28UNJF-3A	.375 .367	.410	.250 .244	.2495 .2485	.035	.050	.188	.040	.120	.162	.020 .010	4,625 LBS
-5	.3125-24UNJF-3A	.500 .489	.545	.312 .306	.3120 .3115	.040	.065	.250	.050	.151	.205	.020 .010	7,400 LBS
-6	.3750-24UNJF-3A	.562 .551	.614	.375 .368	.3745 .3740	.040	.065	.312	.050	.182	.268	.025 .015	11,300 LBS

NOTES, UNLESS OTHERWISE SPECIFIED:

- MATERIAL: TITANIUM, TI-6Al-4V PER MIL-T-9047.
- HEAT TREAT: PER MIL-H-81200, SOLUTION TREATED AND AGED TO ACHIEVE 160,000 PSI MINIMUM TENSILE STRENGTH.
- FINISH: NONE.
- SCREW TO BE USED WITH CA2210-()R RETAINING RING TO CAPTIVATE TO PANEL.
- PANEL PREPARATION: REFER TO CAL-STD-0260 DRAWING.
- INSTALLATION: REFER TO CA2210T-() DRAWING.

7. PART CALLOUT EXAMPLES:
CA22027-4-10-25



- TOLERANCES, UNLESS OTHERWISE SPECIFIED: .XX ±.02, .XXX ±.010, ANGLES ± 2°.
- LONGER GRIPS (IN 1/32" INCREMENTS) AND LONGER LENGTHS (IN 1/16" INCREMENTS) THAN ARE SHOWN IN TABLES 2 THRU 5 MAY BE ORDERED.

INTERIM DOCUMENT REVISION	
Rev.	DAF #
Date	
01	94301
10/21/10	

PROJECT NUMBER: 95-047

CURRENT DESIGN ACTIVITY CAGE CODE 29372, FAIRCHILD FASTENERS, 3000 W. LOMITA BLVD., TORRANCE, CALIFORNIA 90505

APPROVED DATE 8 NOV 94	Fairchild AEROSPACE FASTENER DIVISION ENGINEERING CENTER 3000 WEST LOMITA BOULEVARD TORRANCE, CA 90505	CAGE CODE 92215 TRIDAIR PRODUCT
REV. LETTER AND DATE D 25 FEB 99 U.S.		SCREW, CAPTIVE, HEX HEAD, TI-6Al-4V, 160 KSI
DAF NUMBER DAF 40938 CA		

SCANNED

Vol-Shan • Tridair • Screwcorp

TABLE 2

.190-32 SIZE FIRST DASH NO.-10	G GRIP									L
	.062	.094	.125	.156	.187	.218	.250	.281	.312	LENGTH
-2-7	-3-7	-4-7	-5-7	-6-7	-7-7	-8-7	-9-7			.437
-2-8	-3-8	-4-8	-5-8	-6-8	-7-8	-8-8	-9-8	-10-8		.500
-2-9	-3-9	-4-9	-5-9	-6-9	-7-9	-8-9	-9-9	-10-9		.562
-2-10	-3-10	-4-10	-5-10	-6-10	-7-10	-8-10	-9-10	-10-10		.625
-2-11	-3-11	-4-11	-5-11	-6-11	-7-11	-8-11	-9-11	-10-11		.687
-2-12	-3-12	-4-12	-5-12	-6-12	-7-12	-8-12	-9-12	-10-12		.750
-2-13	-3-13	-4-13	-5-13	-6-13	-7-13	-8-13	-9-13	-10-13		.812
-2-14	-3-14	-4-14	-5-14	-6-14	-7-14	-8-14	-9-14	-10-14		.875
-2-15	-3-15	-4-15	-5-15	-6-15	-7-15	-8-15	-9-15	-10-15		.937
-2-16	-3-16	-4-16	-5-16	-6-16	-7-16	-8-16	-9-16	-10-16		1.000
-2-17	-3-17	-4-17	-5-17	-6-17	-7-17	-8-17	-9-17	-10-17		1.062
-2-18	-3-18	-4-18	-5-18	-6-18	-7-18	-8-18	-9-18	-10-18		1.125
-2-19	-3-19	-4-19	-5-19	-6-19	-7-19	-8-19	-9-19	-10-19		1.187
-2-20	-3-20	-4-20	-5-20	-6-20	-7-20	-8-20	-9-20	-10-20		1.250
-2-21	-3-21	-4-21	-5-21	-6-21	-7-21	-8-21	-9-21	-10-21		1.312
-2-22	-3-22	-4-22	-5-22	-6-22	-7-22	-8-22	-9-22	-10-22		1.375
-2-23	-3-23	-4-23	-5-23	-6-23	-7-23	-8-23	-9-23	-10-23		1.437
-2-24	-3-24	-4-24	-5-24	-6-24	-7-24	-8-24	-9-24	-10-24		1.500
-2-25	-3-25	-4-25	-5-25	-6-25	-7-25	-8-25	-9-25	-10-25		1.562
-2-26	-3-26	-4-26	-5-26	-6-26	-7-26	-8-26	-9-26	-10-26		1.625
-2-27	-3-27	-4-27	-5-27	-6-27	-7-27	-8-27	-9-27	-10-27		1.687
-2-28	-3-28	-4-28	-5-28	-6-28	-7-28	-8-28	-9-28	-10-28		1.750

TABLE 3

.250-28 SIZE FIRST DASH NO.-4	G GRIP									L
	.062	.094	.125	.156	.187	.218	.250	.281	.312	LENGTH
-2-7	-3-7	-4-7	-5-7	-6-7	-7-7	-8-7	-9-7			.437
-2-8	-3-8	-4-8	-5-8	-6-8	-7-8	-8-8	-9-8	-10-8		.500
-2-9	-3-9	-4-9	-5-9	-6-9	-7-9	-8-9	-9-9	-10-9		.562
-2-10	-3-10	-4-10	-5-10	-6-10	-7-10	-8-10	-9-10	-10-10		.625
-2-11	-3-11	-4-11	-5-11	-6-11	-7-11	-8-11	-9-11	-10-11		.687
-2-12	-3-12	-4-12	-5-12	-6-12	-7-12	-8-12	-9-12	-10-12		.750
-2-13	-3-13	-4-13	-5-13	-6-13	-7-13	-8-13	-9-13	-10-13		.812
-2-14	-3-14	-4-14	-5-14	-6-14	-7-14	-8-14	-9-14	-10-14		.875
-2-15	-3-15	-4-15	-5-15	-6-15	-7-15	-8-15	-9-15	-10-15		.937
-2-16	-3-16	-4-16	-5-16	-6-16	-7-16	-8-16	-9-16	-10-16		1.000
-2-17	-3-17	-4-17	-5-17	-6-17	-7-17	-8-17	-9-17	-10-17		1.062
-2-18	-3-18	-4-18	-5-18	-6-18	-7-18	-8-18	-9-18	-10-18		1.125
-2-19	-3-19	-4-19	-5-19	-6-19	-7-19	-8-19	-9-19	-10-19		1.187
-2-20	-3-20	-4-20	-5-20	-6-20	-7-20	-8-20	-9-20	-10-20		1.250
-2-21	-3-21	-4-21	-5-21	-6-21	-7-21	-8-21	-9-21	-10-21		1.312
-2-22	-3-22	-4-22	-5-22	-6-22	-7-22	-8-22	-9-22	-10-22		1.375
-2-23	-3-23	-4-23	-5-23	-6-23	-7-23	-8-23	-9-23	-10-23		1.437
-2-24	-3-24	-4-24	-5-24	-6-24	-7-24	-8-24	-9-24	-10-24		1.500
-2-25	-3-25	-4-25	-5-25	-6-25	-7-25	-8-25	-9-25	-10-25		1.562
-2-26	-3-26	-4-26	-5-26	-6-26	-7-26	-8-26	-9-26	-10-26		1.625
-2-27	-3-27	-4-27	-5-27	-6-27	-7-27	-8-27	-9-27	-10-27		1.687
-2-28	-3-28	-4-28	-5-28	-6-28	-7-28	-8-28	-9-28	-10-28		1.750

INTERIM DOCUMENT REVISION	
Rev.	Date
01	10/21/10
DAF #	94301

PROJECT NUMBER: 95-047
513690

CURRENT DESIGN ACTIVITY CAGE CODE 29372, FAIRCHILD FASTENERS, 3000 W. LOMITA BLVD., TORRANCE, CALIFORNIA 90505

APPROVED DATE 8 NOV 94	 AEROSPACE FASTENER DIVISION ENGINEERING CENTER 3000 WEST LOMITA BOULEVARD TORRANCE, CA 90505	CAGE CODE 92215 TRIDAIR PRODUCT
REV. LETTER AND DATE D 23 FEB 00 (1.5)		SCREW, CAPTIVE, HEX HEAD, TI-6AL-4V, 160 KSI
DAF NUMBER DAF 40900 CA		SHEET 2 OF 3

REVIEWED

Vol-Shan · Tridair · Sorawoorp

TABLE 4

	G GRIP									L
	.062	.094	.125	.156	.187	.218	.250	.281	.312	LENGTH
.3125-24 SIZE FIRST DASH NO.-5	-2-7	-3-7	-4-7	-5-7	-6-7	-7-7				.437
	-2-8	-3-8	-4-8	-5-8	-6-8	-7-8	-8-8	-9-8		.500
	-2-9	-3-9	-4-9	-5-9	-6-9	-7-9	-8-9	-9-9	-10-9	.562
	-2-10	-3-10	-4-10	-5-10	-6-10	-7-10	-8-10	-9-10	-10-10	.625
	-2-11	-3-11	-4-11	-5-11	-6-11	-7-11	-8-11	-9-11	-10-11	.687
	-2-12	-3-12	-4-12	-5-12	-6-12	-7-12	-8-12	-9-12	-10-12	.750
	-2-13	-3-13	-4-13	-5-13	-6-13	-7-13	-8-13	-9-13	-10-13	.812
	-2-14	-3-14	-4-14	-5-14	-6-14	-7-14	-8-14	-9-14	-10-14	.875
	-2-15	-3-15	-4-15	-5-15	-6-15	-7-15	-8-15	-9-15	-10-15	.937
	-2-16	-3-16	-4-16	-5-16	-6-16	-7-16	-8-16	-9-16	-10-16	1.000
	-2-17	-3-17	-4-17	-5-17	-6-17	-7-17	-8-17	-9-17	-10-17	1.062
	-2-18	-3-18	-4-18	-5-18	-6-18	-7-18	-8-18	-9-18	-10-18	1.125
	-2-19	-3-19	-4-19	-5-19	-6-19	-7-19	-8-19	-9-19	-10-19	1.187
	-2-20	-3-20	-4-20	-5-20	-6-20	-7-20	-8-20	-9-20	-10-20	1.250
	-2-21	-3-21	-4-21	-5-21	-6-21	-7-21	-8-21	-9-21	-10-21	1.312
	-2-22	-3-22	-4-22	-5-22	-6-22	-7-22	-8-22	-9-22	-10-22	1.375
	-2-23	-3-23	-4-23	-5-23	-6-23	-7-23	-8-23	-9-23	-10-23	1.437
	-2-24	-3-24	-4-24	-5-24	-6-24	-7-24	-8-24	-9-24	-10-24	1.500
	-2-25	-3-25	-4-25	-5-25	-6-25	-7-25	-8-25	-9-25	-10-25	1.562
	-2-26	-3-26	-4-26	-5-26	-6-26	-7-26	-8-26	-9-26	-10-26	1.625
-2-27	-3-27	-4-27	-5-27	-6-27	-7-27	-8-27	-9-27	-10-27	1.687	
-2-28	-3-28	-4-28	-5-28	-6-28	-7-28	-8-28	-9-28	-10-28	1.750	

TABLE 5

	G GRIP									L
	.062	.094	.125	.156	.187	.218	.250	.281	.312	LENGTH
.375-24 SIZE FIRST DASH NO.-6	-2-7	-3-7	-4-7	-5-7	-6-7	-7-7				.437
	-2-8	-3-8	-4-8	-5-8	-6-8	-7-8	-8-8	-9-8		.500
	-2-9	-3-9	-4-9	-5-9	-6-9	-7-9	-8-9	-9-9	-10-9	.562
	-2-10	-3-10	-4-10	-5-10	-6-10	-7-10	-8-10	-9-10	-10-10	.625
	-2-11	-3-11	-4-11	-5-11	-6-11	-7-11	-8-11	-9-11	-10-11	.687
	-2-12	-3-12	-4-12	-5-12	-6-12	-7-12	-8-12	-9-12	-10-12	.750
	-2-13	-3-13	-4-13	-5-13	-6-13	-7-13	-8-13	-9-13	-10-13	.812
	-2-14	-3-14	-4-14	-5-14	-6-14	-7-14	-8-14	-9-14	-10-14	.875
	-2-15	-3-15	-4-15	-5-15	-6-15	-7-15	-8-15	-9-15	-10-15	.937
	-2-16	-3-16	-4-16	-5-16	-6-16	-7-16	-8-16	-9-16	-10-16	1.000
	-2-17	-3-17	-4-17	-5-17	-6-17	-7-17	-8-17	-9-17	-10-17	1.062
	-2-18	-3-18	-4-18	-5-18	-6-18	-7-18	-8-18	-9-18	-10-18	1.125
	-2-19	-3-19	-4-19	-5-19	-6-19	-7-19	-8-19	-9-19	-10-19	1.187
	-2-20	-3-20	-4-20	-5-20	-6-20	-7-20	-8-20	-9-20	-10-20	1.250
	-2-21	-3-21	-4-21	-5-21	-6-21	-7-21	-8-21	-9-21	-10-21	1.312
	-2-22	-3-22	-4-22	-5-22	-6-22	-7-22	-8-22	-9-22	-10-22	1.375
	-2-23	-3-23	-4-23	-5-23	-6-23	-7-23	-8-23	-9-23	-10-23	1.437
	-2-24	-3-24	-4-24	-5-24	-6-24	-7-24	-8-24	-9-24	-10-24	1.500
	-2-25	-3-25	-4-25	-5-25	-6-25	-7-25	-8-25	-9-25	-10-25	1.562
	-2-26	-3-26	-4-26	-5-26	-6-26	-7-26	-8-26	-9-26	-10-26	1.625
-2-27	-3-27	-4-27	-5-27	-6-27	-7-27	-8-27	-9-27	-10-27	1.687	
-2-28	-3-28	-4-28	-5-28	-6-28	-7-28	-8-28	-9-28	-10-28	1.750	

INTERIM DOCUMENT REVISION	
Rev.	DAF #
D1	94301
Date	10/21/10

SCANNED

PROJECT NUMBER: 95-047
CA22027

CURRENT DESIGN ACTIVITY CAGE CODE 29372, FAIRCHILD FASTENERS, 3000 W. LOMITA BLVD., TORRANCE, CALIFORNIA 90505

APPROVED DATE 8 NOV 94	 AEROSPACE FASTENER DIVISION ENGINEERING CENTER 3000 WEST LOMITA BOULEVARD TORRANCE, CA 90505	CAGE CODE 92215 TRIDAIR PRODUCT
REV. LETTER AND DATE D 25 FEB 00 U.S.		SCREW, CAPTIVE, HEX HEAD, TI-6AL-4V, 180 KSI
DAF NUMBER DAF 40900		