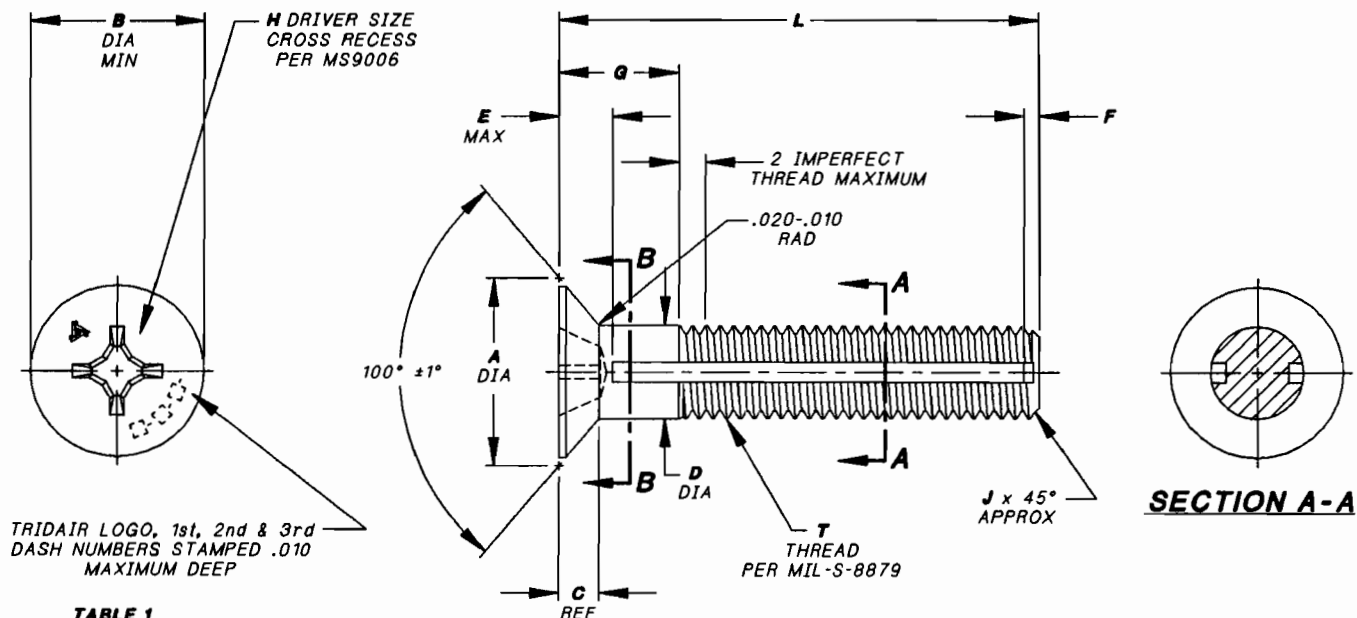


Voi-Shan • Tridair • Screwcorp



TRIDAIR LOGO, 1st, 2nd & 3rd DASH NUMBERS STAMPED .010 MAXIMUM DEEP

TABLE 1

FIRST DASH NUMBER	T THREAD SIZE	A DIA	B DIA MIN	C REF	D DIA	E MAX	F	J	H SIZE
-06	.1380-32UNJC-3A	.279 .267	.231	.057	.1375 .1365	.100	.040	.030	#2
-08	.1640-32UNJC-3A	.332 .319	.270	.068	.1635 .1625	.100	.040	.030	#2
-10	.1900-32UNJF-3A	.385 .371	.322	.080	.1895 .1885	.100	.040	.030	#2
-4	.2500-28UNJF-3A	.507 .491	.442	.106	.2495 .2485	.140	.040	.035	#3
-5	.3125-24UNJF-3A	.635 .617	.568	.133	.3120 .3110	.165	.050	.040	#4
-6	.3750-24UNJF-3A	.762 .742	.694	.160	.3745 .3735	.195	.050	.040	#4

TABLE 2

FIRST DASH NUMBER	RECOMMENDED SEATING TORQUE, INCH-LBS	ULTIMATE TENSILE STRENGTH MIN (CALCULATED)	ULTIMATE SHEAR STRENGTH MIN ACROSS A-A (CALCULATED)	ULTIMATE SHEAR STRENGTH MIN ACROSS B-B (CALCULATED)
-06	12 TO 18	1,060 LBS	750 LBS	970 LBS
-08	22 TO 33	1,650 LBS	990 LBS	1,400 LBS
-10	37 TO 57	2,425 LBS	1,450 LBS	1,950 LBS
-4	92 TO 140	4,625 LBS	2,775 LBS	3,580 LBS
-5	185 TO 285	7,400 LBS	4,425 LBS	5,650 LBS
-6	330 TO 500	11,300 LBS	7,300 LBS	8,310 LBS

INTERIM DOCUMENT REVISION	
Rev.	DAF #
N/A	94301
Date	
10/21/10	

PROJECT NUMBER: 95-023

APPROVED DATE

6 OCT 94

REV. LETTER AND DATE

~~6 OCT 94~~

ECN NUMBER

~~ECN 30009~~

**Fairchild** AEROSPACE FASTENER DIVISION  
**ENGINEERING CENTER**  
 3010 WEST LOMITA BOULEVARD  
 TORRANCE, CA 90505

CAGE CODE **29372**  
 TRIDAIR PRODUCT

**SCREW, CAPTIVE, 100° HEAD, MS9006 RECESS, CRES, 160 KSI**

**CA22026-()-()-()**

SHEET 1 OF 4

SCANNED

Voi-Shan • Tridair • Scrawcorp

TABLE 3

	G GRIP						L LENGTH
	.125	.156	.187	.218	.250	.281	
-4-7	-5-7	-6-7	-7-7	-8-7			.437
-4-8	-5-8	-6-8	-7-8	-8-8	-9-8		.500
-4-9	-5-9	-6-9	-7-9	-8-9	-9-9	-10-9	.562
-4-10	-5-10	-6-10	-7-10	-8-10	-9-10	-10-10	.625
-4-11	-5-11	-6-11	-7-11	-8-11	-9-11	-10-11	.687
-4-12	-5-12	-6-12	-7-12	-8-12	-9-12	-10-12	.750
-4-13	-5-13	-6-13	-7-13	-8-13	-9-13	-10-13	.812
-4-14	-5-14	-6-14	-7-14	-8-14	-9-14	-10-14	.875
-4-15	-5-15	-6-15	-7-15	-8-15	-9-15	-10-15	.937
-4-16	-5-16	-6-16	-7-16	-8-16	-9-16	-10-16	1.000
-4-17	-5-17	-6-17	-7-17	-8-17	-9-17	-10-17	1.062
-4-18	-5-18	-6-18	-7-18	-8-18	-9-18	-10-18	1.125
-4-19	-5-19	-6-19	-7-19	-8-19	-9-19	-10-19	1.187
-4-20	-5-20	-6-20	-7-20	-8-20	-9-20	-10-20	1.250
-4-21	-5-21	-6-21	-7-21	-8-21	-9-21	-10-21	1.312
-4-22	-5-22	-6-22	-7-22	-8-22	-9-22	-10-22	1.375
-4-23	-5-23	-6-23	-7-23	-8-23	-9-23	-10-23	1.437
-4-24	-5-24	-6-24	-7-24	-8-24	-9-24	-10-24	1.500
-4-25	-5-25	-6-25	-7-25	-8-25	-9-25	-10-25	1.562
-4-26	-5-26	-6-26	-7-26	-8-26	-9-26	-10-26	1.625
-4-27	-5-27	-6-27	-7-27	-8-27	-9-27	-10-27	1.687
-4-28	-5-28	-6-28	-7-28	-8-28	-9-28	-10-28	1.750

TABLE 4

	G GRIP						L LENGTH
	.125	.156	.187	.218	.250	.281	
-4-7	-5-7	-6-7	-7-7	-8-7			.437
-4-8	-5-8	-6-8	-7-8	-8-8	-9-8		.500
-4-9	-5-9	-6-9	-7-9	-8-9	-9-9	-10-9	.562
-4-10	-5-10	-6-10	-7-10	-8-10	-9-10	-10-10	.625
-4-11	-5-11	-6-11	-7-11	-8-11	-9-11	-10-11	.687
-4-12	-5-12	-6-12	-7-12	-8-12	-9-12	-10-12	.750
-4-13	-5-13	-6-13	-7-13	-8-13	-9-13	-10-13	.812
-4-14	-5-14	-6-14	-7-14	-8-14	-9-14	-10-14	.875
-4-15	-5-15	-6-15	-7-15	-8-15	-9-15	-10-15	.937
-4-16	-5-16	-6-16	-7-16	-8-16	-9-16	-10-16	1.000
-4-17	-5-17	-6-17	-7-17	-8-17	-9-17	-10-17	1.062
-4-18	-5-18	-6-18	-8-18	-8-18	-9-18	-10-18	1.125
-4-19	-5-19	-6-19	-7-19	-8-19	-9-19	-10-19	1.187
-4-20	-5-20	-6-20	-7-20	-8-20	-9-20	-10-20	1.250
-4-21	-5-21	-6-21	-7-21	-8-21	-9-21	-10-21	1.312
-4-22	-5-22	-6-22	-7-22	-8-22	-9-22	-10-22	1.375
-4-23	-5-23	-6-23	-7-23	-8-23	-9-23	-10-23	1.437
-4-24	-5-24	-6-24	-7-24	-8-24	-9-24	-10-24	1.500
-4-25	-5-25	-6-25	-7-25	-8-25	-9-25	-10-25	1.562
-4-26	-5-26	-6-26	-7-26	-8-26	-9-26	-10-26	1.625
-4-27	-5-27	-6-27	-7-27	-8-27	-9-27	-10-27	1.687
-4-28	-5-28	-6-28	-7-28	-8-28	-9-28	-10-28	1.750

INTERIM DOCUMENT REVISION	
Rev.	DAF #
N/A	94301
Date	10/21/00

PROJECT NUMBER: 95-023

APPROVED DATE
6 OCT 94
REV. LETTER AND DATE
0 OCT 94
ECN NUMBER
ECN 30039

**Fairchild** AEROSPACE FASTENER DIVISION  
 ENGINEERING CENTER  
 3010 WEST LOMITA BOULEVARD  
 TORRANCE, CA 90505

CAGE CODE **29372**  
 TRIDAIR PRODUCT

SCREW, CAPTIVE, 100° HEAD,  
 MS9006 RECESS, CRES, 160 KSI

CA22026-()-()-()

SHEET 2 OF 4

Voi-Shan • Tridair • Screwcorp

TABLE 5

	G GRIP						L LENGTH
	.125	.156	.187	.218	.250	.281	
.1900-32 SIZE FIRST DASH NUMBER -10	-4-7	-5-7	-6-7	-7-7	-8-7		.437
	-4-8	-5-8	-6-8	-7-8	-8-8	-9-8	.500
	-4-9	-5-9	-6-9	-7-9	-8-9	-9-9	.562
	-4-10	-5-10	-6-10	-7-10	-8-10	-9-10	.625
	-4-11	-5-11	-6-11	-7-11	-8-11	-9-11	.687
	-4-12	-5-12	-6-12	-7-12	-8-12	-9-12	.750
	-4-13	-5-13	-6-13	-7-13	-8-13	-9-13	.812
	-4-14	-5-14	-6-14	-7-14	-8-14	-9-14	.875
	-4-15	-5-15	-6-15	-7-15	-8-15	-9-15	.937
	-4-16	-5-16	-6-16	-7-16	-8-16	-9-16	1.000
	-4-17	-5-17	-6-17	-7-17	-8-17	-9-17	1.062
	-4-18	-5-18	-6-18	-7-18	-8-18	-9-18	1.125
	-4-19	-5-19	-6-19	-7-19	-8-19	-9-19	1.187
	-4-20	-5-20	-6-20	-7-20	-8-20	-9-20	1.250
	-4-21	-5-21	-6-21	-7-21	-8-21	-9-21	1.312
	-4-22	-5-22	-6-22	-7-22	-8-22	-9-22	1.375
	-4-23	-5-23	-6-23	-7-23	-8-23	-9-23	1.437
	-4-24	-5-24	-6-24	-7-24	-8-24	-9-24	1.500
	-4-25	-5-25	-6-25	-7-25	-8-25	-9-25	1.562
	-4-26	-5-26	-6-26	-7-26	-8-26	-9-26	1.625
	-4-27	-5-27	-6-27	-7-27	-8-27	-9-27	1.687
	-4-28	-5-28	-6-28	-7-28	-8-28	-9-28	1.750

TABLE 6

	G GRIP					L LENGTH
	.156	.187	.218	.250	.281	
.2500-28 SIZE FIRST DASH NUMBER -4	-5-7	-6-7	-7-7	-8-7		.437
	-5-8	-6-8	-7-8	-8-8	-9-8	.500
	-5-9	-6-9	-7-9	-8-9	-9-9	.562
	-5-10	-6-10	-7-10	-8-10	-9-10	.625
	-5-11	-6-11	-7-11	-8-11	-9-11	.687
	-5-12	-6-12	-7-12	-8-12	-9-12	.750
	-5-13	-6-13	-7-13	-8-13	-9-13	.812
	-5-14	-6-14	-7-14	-8-14	-9-14	.875
	-5-15	-6-15	-7-15	-8-15	-9-15	.937
	-5-16	-6-16	-7-16	-8-16	-9-16	1.000
	-5-17	-6-17	-7-17	-8-17	-9-17	1.062
	-5-18	-6-18	-7-18	-8-18	-9-18	1.125
	-5-19	-6-19	-7-19	-8-19	-9-19	1.187
	-5-20	-6-20	-7-20	-8-20	-9-20	1.250
	-5-21	-6-21	-7-21	-8-21	-9-21	1.312
	-5-22	-6-22	-7-22	-8-22	-9-22	1.375
	-5-23	-6-23	-7-23	-8-23	-9-23	1.437
	-5-24	-6-24	-7-24	-8-24	-9-24	1.500
	-5-25	-6-25	-7-25	-8-25	-9-25	1.562
	-5-26	-6-26	-7-26	-8-26	-9-26	1.625
	-5-27	-6-27	-7-27	-8-27	-9-27	1.687
	-5-28	-6-28	-7-28	-8-28	-9-28	1.750

INTERIM DOCUMENT REVISION	
Rev.	DAF #
N/A	94301
Date	10/21/10

PROJECT NUMBER: 95-023  
G43660

APPROVED DATE
6 OCT 94
REV. LETTER AND DATE
<del>6 00T 94</del>
ECN NUMBER
<del>ECN 00009</del>

**Fairchild** AEROSPACE FASTENER DIVISION  
**ENGINEERING CENTER**  
 3010 WEST LOMITA BOULEVARD  
 TORRANCE, CA 90505

CAGE CODE **29372**  
 TRIDAIR PRODUCT

**SCREW, CAPTIVE, 100° HEAD,  
 MS9006 RECESS, CRES, 160 KSI**

**CA22026-()-()-()**

SHEET 3 OF 4

Voi-Shan • Tridair • Screwcorp

TABLE 7

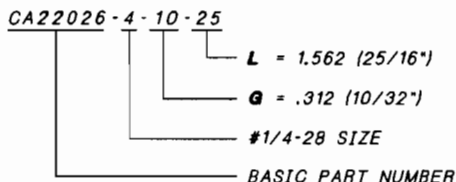
	G GRIP					L LENGTH
	.187	.218	.250	.281	.312	
-6-7	-7-7					.437
-6-8	-7-8	-8-8	-9-8			.500
-6-9	-7-9	-8-9	-9-9	-10-9		.562
-6-10	-7-10	-8-10	-9-10	-10-10		.625
-6-11	-7-11	-8-11	-9-11	-10-11		.687
-6-12	-7-12	-8-12	-9-12	-10-12		.750
-6-13	-7-13	-8-13	-9-13	-10-13		.812
-6-14	-7-14	-8-14	-9-14	-10-14		.875
-6-15	-7-15	-8-15	-9-15	-10-15		.937
-6-16	-7-16	-8-16	-9-16	-10-16		1.000
-6-17	-7-17	-8-17	-9-17	-10-17		1.062
-6-18	-7-18	-8-18	-9-18	-10-18		1.125
-6-19	-7-19	-8-19	-9-19	-10-19		1.187
-6-20	-7-20	-8-20	-9-20	-10-20		1.250
-6-21	-7-21	-8-21	-9-21	-10-21		1.312
-6-22	-7-22	-8-22	-9-22	-10-22		1.375
-6-23	-7-23	-8-23	-9-23	-10-23		1.437
-6-24	-7-24	-8-24	-9-24	-10-24		1.500
-6-25	-7-25	-8-25	-9-25	-10-25		1.562
-6-26	-7-26	-8-26	-9-26	-10-26		1.625
-6-27	-7-27	-8-27	-9-27	-10-27		1.687
-6-28	-7-28	-8-28	-9-28	-10-28		1.750

TABLE 8

	G GRIP				L LENGTH
	.218	.250	.281	.312	
-7-7					.437
-7-8	-8-8	-9-8			.500
-7-9	-8-9	-9-9	-10-9		.562
-7-10	-8-10	-9-10	-10-10		.625
-7-11	-8-11	-9-11	-10-11		.687
-7-12	-8-12	-9-12	-10-12		.750
-7-13	-8-13	-9-13	-10-13		.812
-7-14	-8-14	-9-14	-10-14		.875
-7-15	-8-15	-9-15	-10-15		.937
-7-16	-8-16	-9-16	-10-16		1.000
-7-17	-8-17	-9-17	-10-17		1.062
-7-18	-8-18	-9-18	-10-18		1.125
-7-19	-8-19	-9-19	-10-19		1.187
-7-20	-8-20	-9-20	-10-20		1.250
-7-21	-8-21	-9-21	-10-21		1.312
-7-22	-8-22	-9-22	-10-22		1.375
-7-23	-8-23	-9-23	-10-23		1.437
-7-24	-8-24	-9-24	-10-24		1.500
-7-25	-8-25	-9-25	-10-25		1.562
-7-26	-8-26	-9-26	-10-26		1.625
-7-27	-8-27	-9-27	-10-27		1.687
-7-28	-8-28	-9-28	-10-28		1.750

NOTES:

- MATERIAL: A286 CRES PER AMS 5731, AMS 5737.
- HEAT TREAT: PER AMS 5737, AGE ONLY, TO ACHIEVE 160,000 PSI MINIMUM TENSILE.
- FINISH: PASSIVATE PER QQ-P-35.
- SCREW TO BE USED WITH CA2210-( ) R RETAINING RING TO CAPTIVATE TO PANEL.
- PANEL PREPARATION: REFER TO CAL-STD-0260 DRAWING.
- INSTALLATION: REFER TO CA2210T-( ) DRAWING.
- PART CALLOUT EXAMPLE:



- TOLERANCES, UNLESS OTHERWISE SPECIFIED: .XX ±.02, .XXX ±.010, ANGLES ±2°.
- MAGNETIC PERMEABILITY IS LESS THAN 2.0 (AIR=1.0) FOR A FIELD STRENGTH OF H200 OERSTEDS. MAGNETIC PERMEABILITY INDICATOR PER MIL-I-17214.
- LONGER GRIPS (IN 1/32" INCREMENTS) AND LONGER LENGTHS (IN 1/16" INCREMENTS) THAN ARE SHOWN IN TABLES 3 THRU 8 MAY BE ORDERED.

INTERIM DOCUMENT REVISION		
Rev.	Date	DAF #
N/A1	10/21/10	94301

PROJECT NUMBER: 95-023

APPROVED DATE 6 OCT 94	<b>Fairchild AEROSPACE FASTENER DIVISION</b> ENGINEERING CENTER 3010 WEST LOMITA BOULEVARD TORRANCE, CA 90505	CAGE CODE <b>29372</b> TRIDAIR PRODUCT
REV. LETTER AND DATE <del>6 OCT 94</del>		<b>SCREW, CAPTIVE, 100° HEAD, MS9006 RECESS, CRES, 160 KSI</b>
ECN NUMBER <del>ECN 30009</del>		