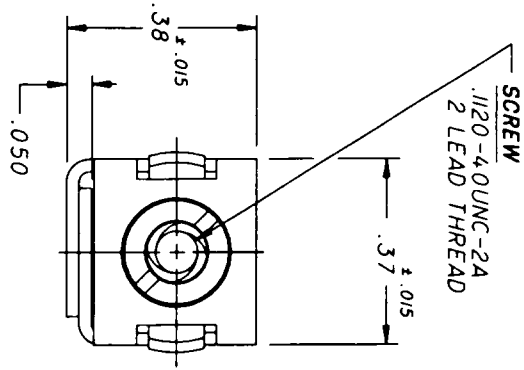
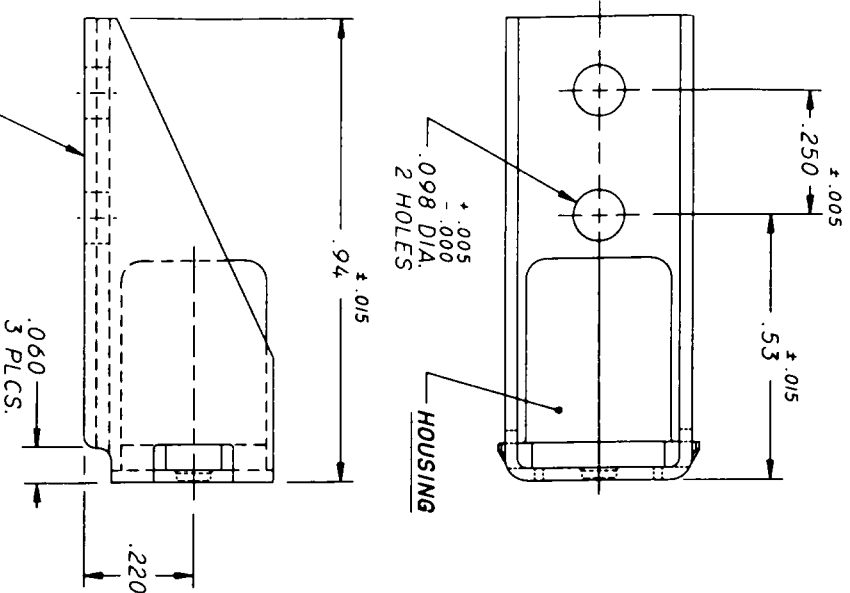


DATE	REV	CHANGE
11/18/76	F	ECO 17806 J.S.



DRAWING PROVIDES FORM, FIT AND FUNCTION DATA. DO NOT ATTEMPT TO MANUFACTURE PRODUCT USING THIS DRAWING.

PATENT(S):
CA2014

SPEC. CHK'D J.S.

NOTES, UNLESS OTHERWISE SPECIFIED:

1. MATERIAL:

- 1.1 CAGE: 300 SERIES CRES PER MIL-S-5059.
- 1.2 HOUSING: 300 SERIES CRES PER ASTM-A-581/582/320, AMS 5640/5738.
- 1.3 SCREW: A286 CRES PER AMS 5731/AMS 5737.

2. HEAT TREAT:

- 2.1 SCREW: 140 K.S.I. MINIMUM PER MIL-H-6875.

3. FINISH:

- 3.1 SCREW: DRY FILM LUBRICANT (ELECTROFILM #2006 OR EQUIV.).
- 3.2 HOUSING & CAGE: PASSIVATE PER QQ-P-35.

4. RECEPTACLE HAS .04 DIAMETRICAL FLOAT.

5. CONSULT TRIDAIR'S ENGINEERING DEPARTMENT FOR AVAILABILITY OF OPTIONAL MATERIALS, FINISHES AND SIZES.

UNLESS OTHERWISE SPECIFIED

FINISH	HEAT TREAT	SCALE
△3	△2	
WEIGHT APPROX. .0106 LBS./EA.		
TOLERANCES: DECIMALS: .010 ANGLES: .25		
UNLESS OTHERWISE SPECIFIED		
SURFACE FINISH: 125 MICROINCHES		

MATERIAL OR NAME		SPECIFICATION	
DRN BY	J.W.T.	7/1/81	
APP'D	M.S.C.		
APP'D	R.L.W.		
RECEPTACLE ASSEMBLY RIGHT ANGLE MOUNTED		CA2014	
TRIDAIR Fosterlensers		FSC: 29312 SH: 1 OF 1	