

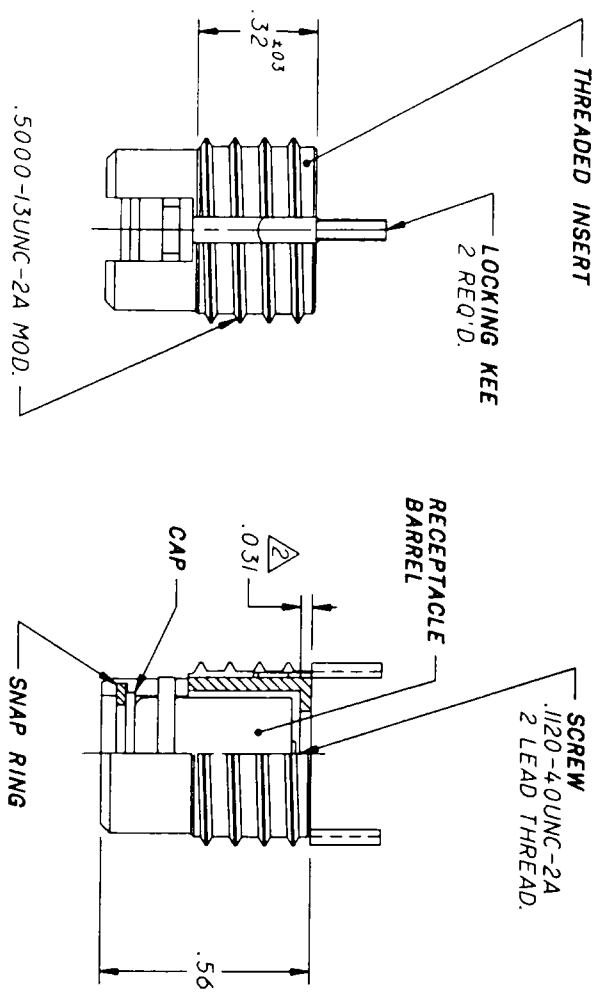
DATE	REV	CHANGE	DRAWING PROVIDES FORM, FIT AND FUNCTION DATA. DO NOT ATTEMPT TO MANUFACTURE PRODUCT USING THIS DRAWING.
4/13/88	N/C	ECO 20008 RELEASE	

DATE: 4/13/88  
 REV: N/C  
 CHANGE: ECO 20008 RELEASE

SPEC. CHK'D.

PATENTS:

**CA20040**

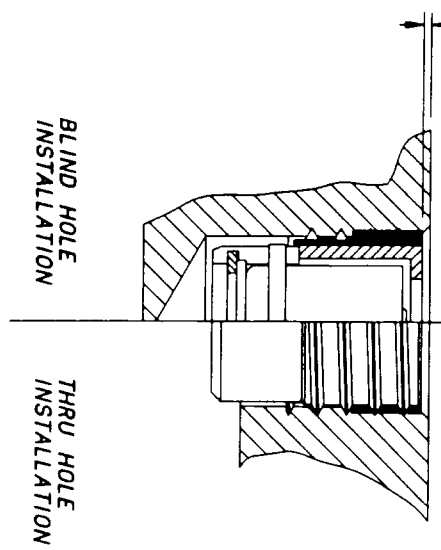


NOTES: UNLESS OTHERWISE SPECIFIED:

- FINISH:
- 1.1 SCREW: DRY FILM LUBED PER MIL-L-8937.
  2. IMPORTANT: ADD .031 TO TOTAL OF PANEL(S) THICKNESS BEING ASSEMBLED WHEN SELECTING STUD NUT GRIP DASH NO.
  - 2.1 TO BE USED WITH CA2000 SERIES STUD NUTS.
  3. FLOAT: RECEPTACLE BARREL FLOATS .035 (TOTAL) WITHIN THREADED INSERT.
  4. CONSULT TRIDAIR'S ENGINEERING DEPARTMENT FOR AVAILABILITY OF OPTIONAL MATERIALS, FINISHES AND SIZES.

- INSTALLATION INSTRUCTIONS:
1. PANEL PREPARATION:
  - 1.1 TAP DRILL .452-.458 DIA. HOLE X .600 MIN. DEPTH.
  - 1.2 .510-.520 DIA. X 82°-100° C'SINK.
  - 1.3 TAP .5000-13UNC-2B X .38 MIN. DEPTH.

INSTALL INSERT .010-.030 BELOW SURFACE AND DRIVE LOCKING KEYS DOWN USING CA18062-T10 INSTALLATION TOOL.



FINISH		UNLESS OTHERWISE SPECIFIED		88-058	
PASSIVATE PER 00-P-35		HEAT TREAT		SCREW ONLY: 140 KSI MIN. PER MIL-H-6875	
WEIGHT		SCALE		SURFACE FINISH: 125 MICROINCHES	
TOLERANCES: DECIMALS ANGLES		MILLIMETERS		SURFACE FINISH: 125 MICROINCHES	
XX 1 .02		.050		.025	
XXX 1 .00		.025		.015	

SNAP RING -PH15-7M0	AMS 5520
CAP -301 CRES	MIL-S-5059
SCREW -A286 CRES	AMS 5731/AMS 5737
RECEPTACLE BARREL-300 SERIES CRES	AMS 5640
THREADED INSERT-300 SERIES CRES	AMS 5640
MATERIAL OR NAME	
RECEPTACLE -LIVESERT-	
DRN BY	3/3/88
APPD	
APPD	
TRIDAIR fasteners	
RECORD: 4-14-88 2000 W. CORTELL ROAD CHANDEL, CA 94508	
FSC: 29312	5HT-1 OF 1
CA20040	