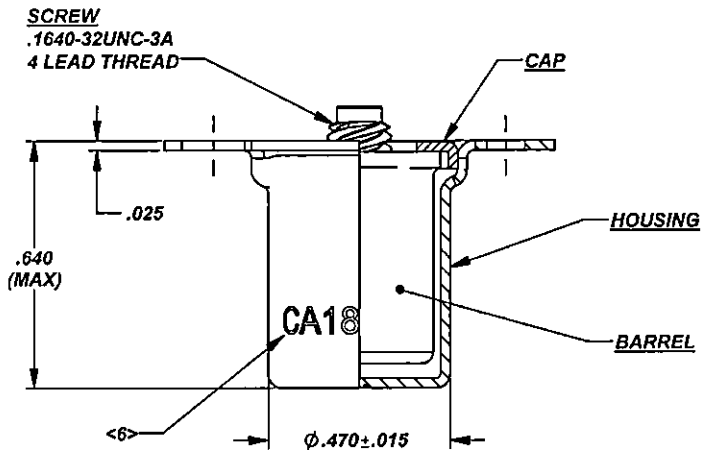
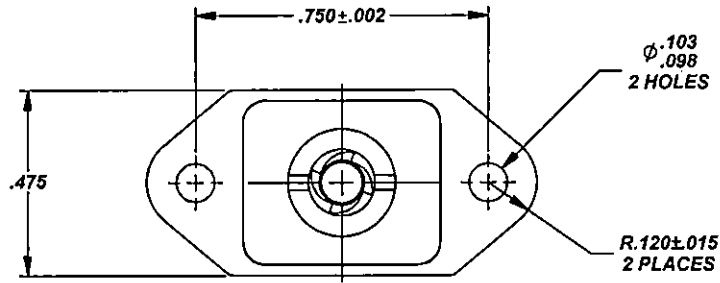




MANUFACTURE OF THE PROPRIETARY PARTS SHOWN HERE WITHOUT WRITTEN CONSENT OF HOWMET FASTENING SYSTEMS IS ABSOLUTELY PROHIBITED.

THIS DRAWING EMBODIES A CONFIDENTIAL, PROPRIETARY DESIGN & ALL DESIGN, MANUFACTURING PRODUCTION, USE & SALE RIGHTS REGARDING SAME ARE EXPRESSLY RESERVED.



**NOTES; UNLESS OTHERWISE SPECIFIED:**

1. MATERIAL:
  - 1.1 BARREL: 300 SERIES CRES PER ASTM-A-581/ASTM-A-582/AMS5640.
  - 1.2 CAP: 300 SERIES CRES PER MIL-S-5059.
  - 1.3 HOUSING: 300 SERIES CRES PER AMS-QQ-S-763/MIL-S-5059.
  - 1.4 SCREW: A286 CRES PER AMS5731-AMS5737.
2. HEAT TREAT:
  - 2.1 SCREW: 140 KSI MINIMUM PER MIL-H-6875.
3. FINISH: PASSIVATED PER AMS-QQ-P-35.
4. RECEPTACLE FLOAT: .015 RADIALLY FROM CENTER.
5. USE WITH ANY CA1800 OR CA18000 SERIES 4 LEAD STUD NUT.
- <6> CA18193 PART NUMBER IDENTIFIED IN AREA SHOWN.
7. WEIGHT: .012 LBS/EA (APPROXIMATE).

ORIGINAL DESIGN ACTIVITY: CAGE CODE 29372, TRIDAIR PRODUCTS

APPROVED DATE <b>16 OCT 74</b>	CURRENT DESIGN ACTIVITY: <b>Howmet Fastening Systems (HFS)</b> TORRANCE OPERATIONS	TITLE: <b>RECEPTACLE ASSEMBLY ENCAPSULATED</b>	CURRENT DESIGN ACTIVITY: CAGE CODE: 29372 SALES DRAWING NO.
REV. LETTER AND DATE <b>D 02 FEB 23</b>	TRIDAIR PRODUCTS 3000 W. LOMITA BLVD. TORRANCE, CA. 90505	UNLESS OTHERWISE SPECIFIED DIMENSIONS ARE IN INCHES & ASME Y14.5M TOLERANCES: ANGLES DECIMALS .XX = ±.02 .XXX = ±.010	<b>CA18193</b>  SHEET 1 OF 1

S45614