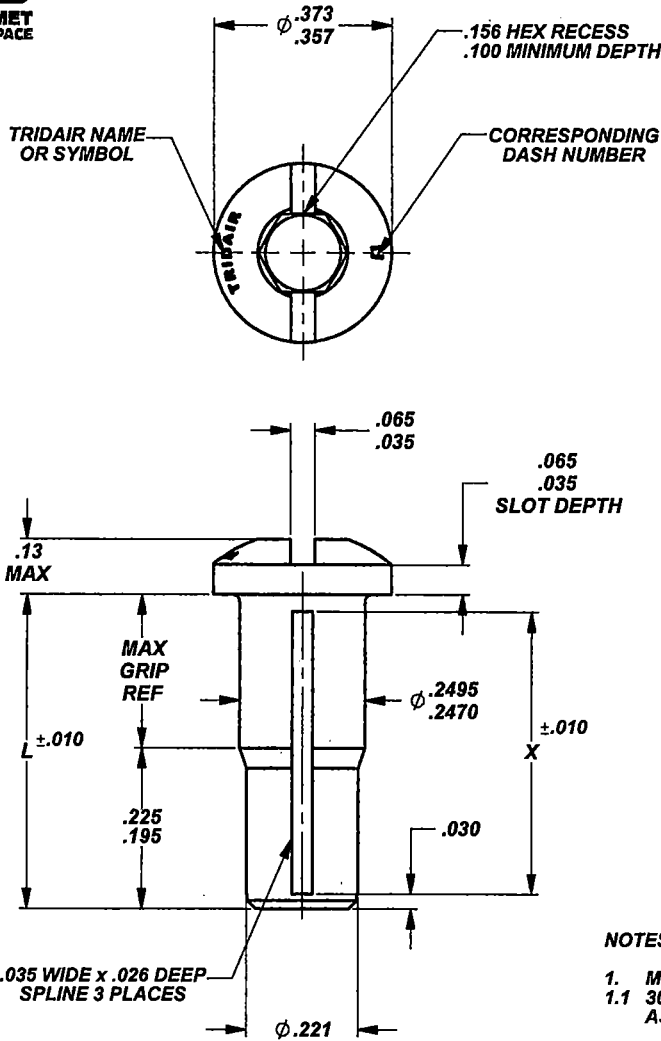




MANUFACTURE OF THE PROPRIETARY PARTS SHOWN HERE WITHOUT WRITTEN CONSENT OF HOWMET FASTENING SYSTEMS IS ABSOLUTELY PROHIBITED.

THIS DRAWING EMBODIES A CONFIDENTIAL, PROPRIETARY DESIGN & ALL DESIGN, MANUFACTURING PRODUCTION, USE & SALE RIGHTS REGARDING SAME ARE EXPRESSLY RESERVED.



**TABLE 1**

DASH NUMBER	L	X	GRIP RANGE		WEIGHT LBS/100 APPROX
			MIN	MAX	
-0	.360	.295	.093	.150	.44
-1	.430	.365	.151	.220	.51
-2	.500	.435	.221	.290	.56
-3	.570	.505	.291	.360	.61
-4	.640	.575	.361	.430	.66
-5	.710	.645	.431	.500	.72
-6	.780	.715	.501	.570	.77
-7	.850	.785	.571	.640	.82
-8	.920	.855	.641	.710	.87
-9	.990	.925	.711	.780	.93
-10	1.060	.995	.781	.850	1.46

**NOTES; UNLESS OTHERWISE SPECIFIED:**

1. MATERIAL:
  - 1.1 300 SERIES CORROSION RESISTANT STEEL PER AMS5640/AMS5738, ASTM-A-581/582/320 AND/OR AMS-QQ-S-763.
2. FINISH:
  - 2.1 CA18161-()HS = PASSIVATED PER AMS2700.
  - 2.2 CA18161-()BHS = BLACK OXIDE PER MIL-DTL-13924, CLASS 2 OR 4. (SUFFIX THE LETTER "B" AFTER DASH NUMBER)
  - 2.3 CA18161-()CHS = CADMIUM PLATE PER AMS-QQ-P-416, TYPE II, CLASS 2 OR AMS2400. (SUFFIX THE LETTER "C" AFTER DASH NUMBER)
3. USAGE:
  - 3.1 THIS STUD NUT IS DESIGNED FOR USE WITH A CA1810 OR CA18157 RECEPTACLE AND A CA18132 RETAINING RING.
4. MECHANICAL PROPERTIES:
  - 4.1 ULTIMATE TENSILE STRENGTH: 1,650 LBS. MINIMUM.
  - 4.2 ULTIMATE SINGLE SHEAR STRENGTH: 1,620 LBS. MINIMUM.
5. THE MECHANICAL PROPERTIES SHOWN ARE CALCULATED VALUES. MECHANICAL PROPERTIES TESTING MAY NOT BE PERFORMED ON EACH PRODUCTION LOT.
6. DO NOT USE UNASSIGNED DASH NUMBERS. CONSULT WITH HOWMET FASTENING SYSTEMS FOR AVAILABILITY OF OPTIONAL MATERIALS, FINISHES AND SIZES.

ORIGINAL DESIGN ACTIVITY: CAGE CODE 29372, TRIDAIR PRODUCTS

APPROVED DATE <b>20 JUL 72</b>	CURRENT DESIGN ACTIVITY: <b>Howmet Fastening Systems (HFS)</b> TORRANCE OPERATIONS	TITLE: <b>STUD BOLT</b>	CURRENT DESIGN ACTIVITY: CAGE CODE: 29372
REV. LETTER DATE <b>S 20 MAY 20</b>			SALES DRAWING NO.
DAF NUMBER <b>119344</b>	TRIDAIR PRODUCTS 3000 W. LOMITA BLVD. TORRANCE, CA. 90505	UNLESS OTHERWISE SPECIFIED DIMENSIONS ARE IN INCHES & ASME Y14.5M TOLERANCES:	<b>CA18161-()HS</b>  SHEET 1 OF 1