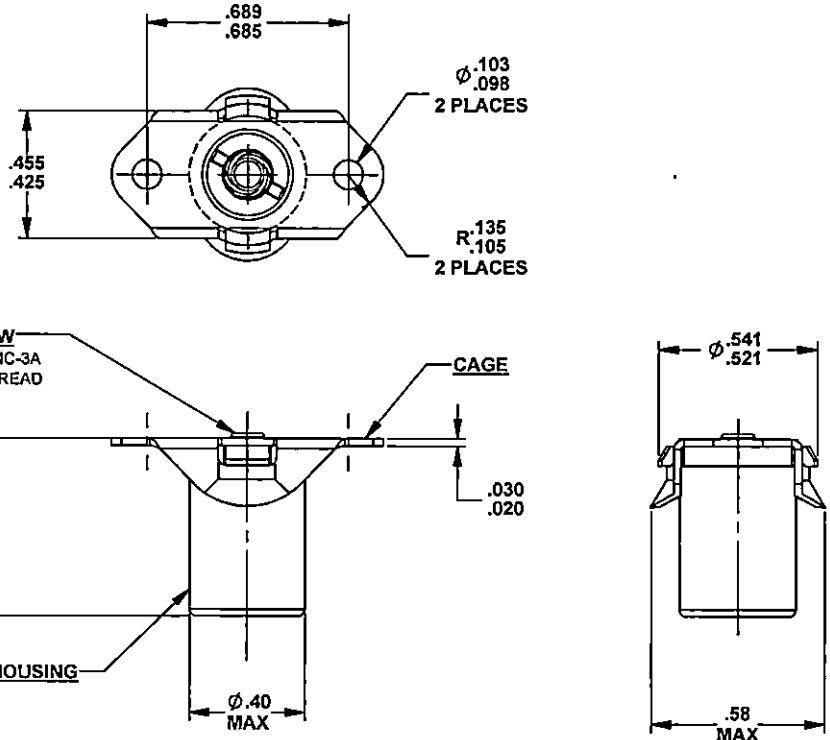




MANUFACTURE OF THE PROPRIETARY PARTS SHOWN HERE WITHOUT WRITTEN CONSENT OF HOWMET FASTENING SYSTEMS IS ABSOLUTELY PROHIBITED.

THIS DRAWING EMBODIES A CONFIDENTIAL, PROPRIETARY DESIGN & ALL DESIGN, MANUFACTURING PRODUCTION, USE & SALE RIGHTS REGARDING SAME ARE EXPRESSLY RESERVED.



NOTES; UNLESS OTHERWISE SPECIFIED:

1. MATERIAL:
 - 1.1 HOUSING: 7075-T73 ALUMINUM ALLOY PER AMS-QQ-A-225/9.
 - 1.2 SCREW: 8740 ALLOY STEEL PER AMS6322 OR AMS-S-6049.
 - 1.3 CAGE: 17-7PH CRES PER AMS5528 OR AMS5529.
2. FINISH:
 - 2.1 HOUSING: BLUE ANODIZE PER MIL-A-6625 TYPE II, CLASS 2.
 - 2.2 SCREW: CADMIUM PLATE PER AMS-QQ-P-416, TYPE II, CLASS 2.
 - 2.3 CAGE: PASSIVATE PER AMS-QQ-P-35 OR CADMIUM PLATED PER AMS-QQ-P-416, TYPE II, CLASS 2.
3. HEAT TREAT:
 - 3.1 SCREW: 160-180 KSI PER AMS-H-6875.
 - 3.2 CAGE: CONDITION TH1050 (180 KSI MINIMUM) HRC 40-46 PER AMS-H-6875.
4. FLOAT: .025 RADIALLY FROM CENTER.
5. PART NUMBER CALLOUT:
 - 5.1 CA18157 DENOTES ASSEMBLY WITH PASSIVATED CAGE.
 - 5.2 CA18157C DENOTES ASSEMBLY WITH CADMIUM PLATED CAGE.
6. COMPONENTS MAY BE ORDERED SEPARATELY BY PART NUMBER:
 - 6.1 CAGE PART NUMBER: CA18157-1 (PASSIVATED) OR CA18157-1C (CADMIUM PLATED).
 - 6.2 HOUSING ASSEMBLY PART NUMBER: CA18158
7. MECHANICAL PROPERTIES:
 - 7.1 PUSH-OUT: 400 LBS. MINIMUM ULTIMATE.
 - 7.2 TORQUE-OUT: 70 IN-LBS. MINIMUM ULTIMATE.
 - 7.3 ULTIMATE TENSILE STRENGTH: 1,900 LBS. MINIMUM
8. USE CA18157-T10 TOOL TO REMOVE RECEPTACLE FROM CAGE.
9. TO BE USED WITH CA1800 OR CA18000 SERIES STUD NUTS.
10. CONSULT HOWMET FASTENING SYSTEM'S ENGINEERING DEPARTMENT FOR AVAILABILITY OF OPTIONAL MATERIALS, FINISHES, AND SIZES.

ORIGINAL DESIGN ACTIVITY: CAGE CODE 29372, TRIDAIR PRODUCTS

APPROVED DATE 29 JAN 72	CURRENT DESIGN ACTIVITY: Howmet Fastening Systems (HFS)	TITLE: ASSEMBLY FLOATING RECEPTACLE	CURRENT DESIGN ACTIVITY: CAGE CODE: 29372
	REV. LETTER DATE N 21 JUL 22		TORRANCE OPERATIONS
DAF NUMBER 121662	TRIDAIR PRODUCTS 3000 W. LOMITA BLVD. TORRANCE, CA. 90505	UNLESS OTHERWISE SPECIFIED DIMENSIONS ARE IN INCHES & ASME Y14.5M TOLERANCES:	CA18157()
S41103		ANGLES DECIMALS XX = ±.01 XXX = ±.010	SHEET 1 OF 1