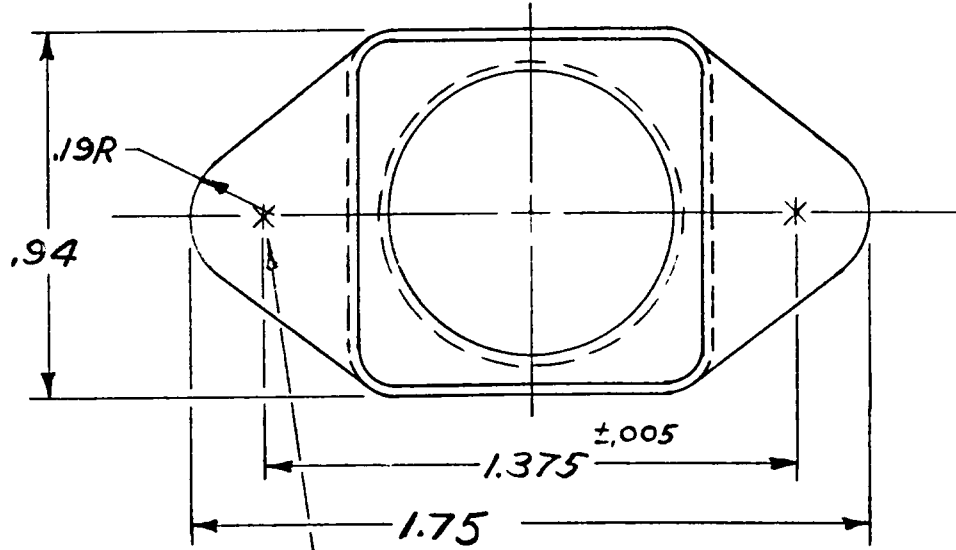


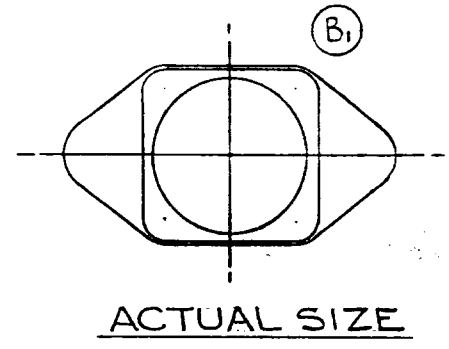
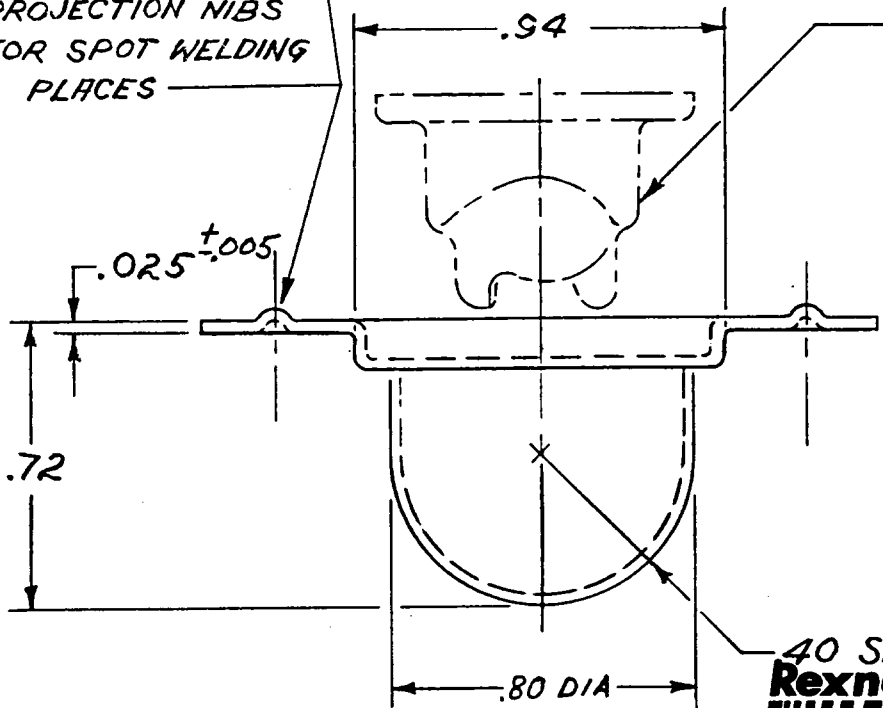
REV. B  
DRAWING NO. 707W

REV.	CHANGE	BY	DATE
A	REDRAWN & REDESIGNED	BROSS	6-5-53
B	ADDED 1.375"	E.A.J.	1-4-55
OK	TO TITLE	JKK	
OK	B <sub>1</sub> ADDED ACTUAL SIZE VIEW	E.A.J.	1-4-55



PROJECTION NIBS FOR SPOT WELDING 2 PLACES

BRONZE RECEPTACLE INSERT, NO. 701, TO BE INSTALLED BEFORE SPOT WELDING (REF)



40 SPHER R  
**Rexnord**

We've changed our corporate name to Rexnord Inc.

THIS DOCUMENT IS PROTECTED BY COMMON LAW COPYRIGHT. IS RECEIVED IN CONFIDENCE AND SHALL NOT BE REPRODUCED, USED OR DISSEMINATED IN WHOLE OR IN PART WITHOUT WRITTEN PERMISSION OF CAMLOC FASTENER CORP.

CAMLOC FASTENER CORPORATION  
PARAMUS, NEW JERSEY

FINISH <b>FLASH CAD PLATE</b>	SCALE <b>2=1</b>	WEIGHT <b>1.75/100</b>	TITLE <b>CAGE - 1.375" (B) SEALED RECEPTACLE, SPOT WELD TYPE</b>
HEAT TREATMENT	DR. <b>ROSOISH</b>	<b>1-11-51</b>	MODEL OR SERIES <b>4002</b>
MATERIAL <b>LOW CARBON STEEL</b>	CHK. <b>NEWCOMER</b>	<b>4-16-51</b>	DRAWING NO. <b>707W</b>
TOLERANCES UNLESS OTHERWISE SPECIFIED: <b>DEC. ±.02 ANG. ± 1°</b>	ENGR. APP. <b>R SW</b>	<b>4-16-51</b>	REV. <b>B</b>
	SALES APP.		