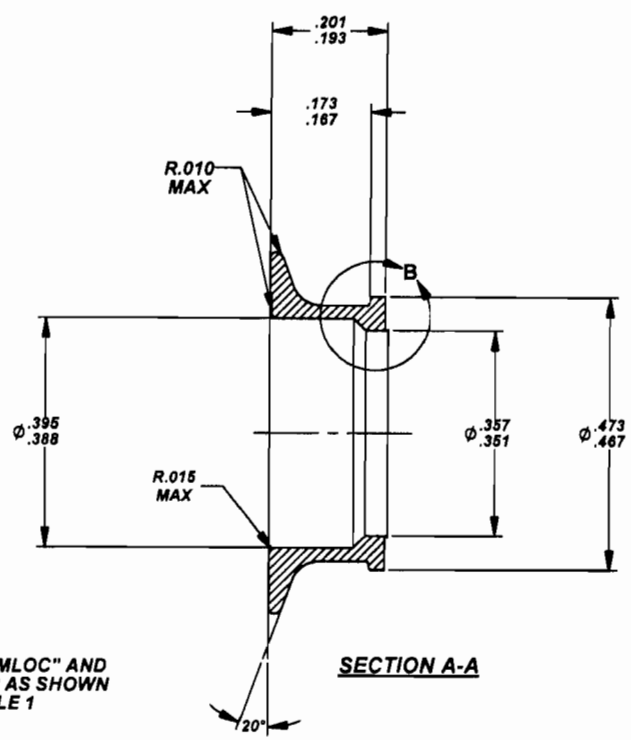
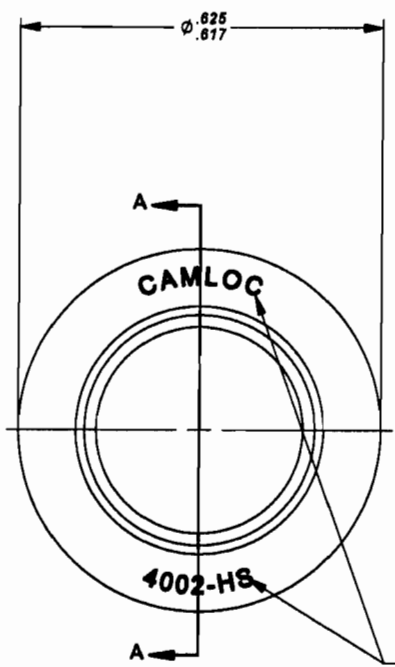


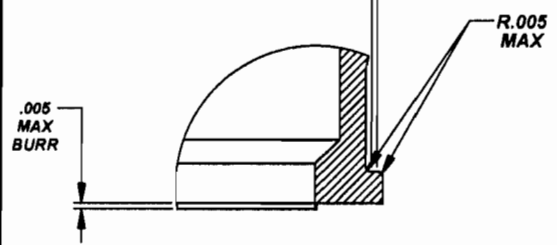
MANUFACTURE OF THE PROPRIETARY PARTS SHOWN HERE WITHOUT WRITTEN CONSENT OF ALCOA FASTENING SYSTEMS IS ABSOLUTELY PROHIBITED.  
  
 THIS DRAWING EMBODIES A CONFIDENTIAL, PROPRIETARY DESIGN & ALL DESIGN, MANUFACTURING PRODUCTION, USE & SALE RIGHTS REGARDING SAME ARE EXPRESSLY RESERVED.



STAMPED "CAMLOC" AND PART NUMBER AS SHOWN IN TABLE 1

**SECTION A-A**

.005 MINIMUM FLAT NORMAL TO AXIS OF GROMMET WITHIN ±2°



**DETAIL - B**

**TABLE 1**

PART NUMBER	MATERIAL	FINISH	WEIGHT LBS/100
4002-H	CARBON STEEL PER ASTM A108	CADMIUM PLATE PER AMS-QQ-P-416, CLASS 2, TYPE II	.33
4002-H-1		ZINC PLATE PER ASTM B633, CLASS 5, TYPE II (CLEAR CHROMATE)	
4002-H-2		ZINC PLATE PER ASTM B633, CLASS 5, TYPE II (YELLOW CHROMATE)	
<2> 4002-HS	300 SERIES CRES PER ASTM A582	PASSIVATE PER AMS2700, TYPE 2	.34

**NOTES; UNLESS OTHERWISE SPECIFIED:**

- FOR INSTALLATION PROCEDURE, SEE CAMLOC CATALOG, 4002 SERIES.
- <2> COBENIUM SNAP RING CATALOG NUMBER 40G26 AND 4002 CRES STUD ASSEMBLIES ARE AVAILABLE FOR USE WITH THIS GROMMET.
- ALL EDGES BROKEN .005 MAXIMUM AND ALL FINS AND BURRS REMOVED EXCEPT WHERE OTHERWISE NOTED.

APPROVED DATE <b>24 SEP 91</b>	CURRENT DESIGN ACTIVITY: <b>Alcoa Fastening Systems &amp; Rings</b> 	TITLE: <h3 style="text-align: center;">GROMMET, FLUSH LARGE GRIP</h3>	CURRENT DESIGN ACTIVITY: <b>CAGE CODE: 29372</b>
REV. LETTER AND DATE <b>P 16 NOV 15</b>	TRIDAIR PRODUCTS 300 W. LOMITA BLVD. TORRANCE, CA. 90505	UNLESS OTHERWISE SPECIFIED DIMENSIONS ARE IN INCHES & ASME Y14.5M TOLERANCES:	<b>SALES DRAWING NO.</b>  <h2 style="text-align: center;">4002-H</h2>
DAF NUMBER <b>DAF 112939</b>		ANGLES = ±3° DECIMALS .XX = ±.02 .XXX = ±.010	<b>SHEET 1 OF 1</b>

S44107