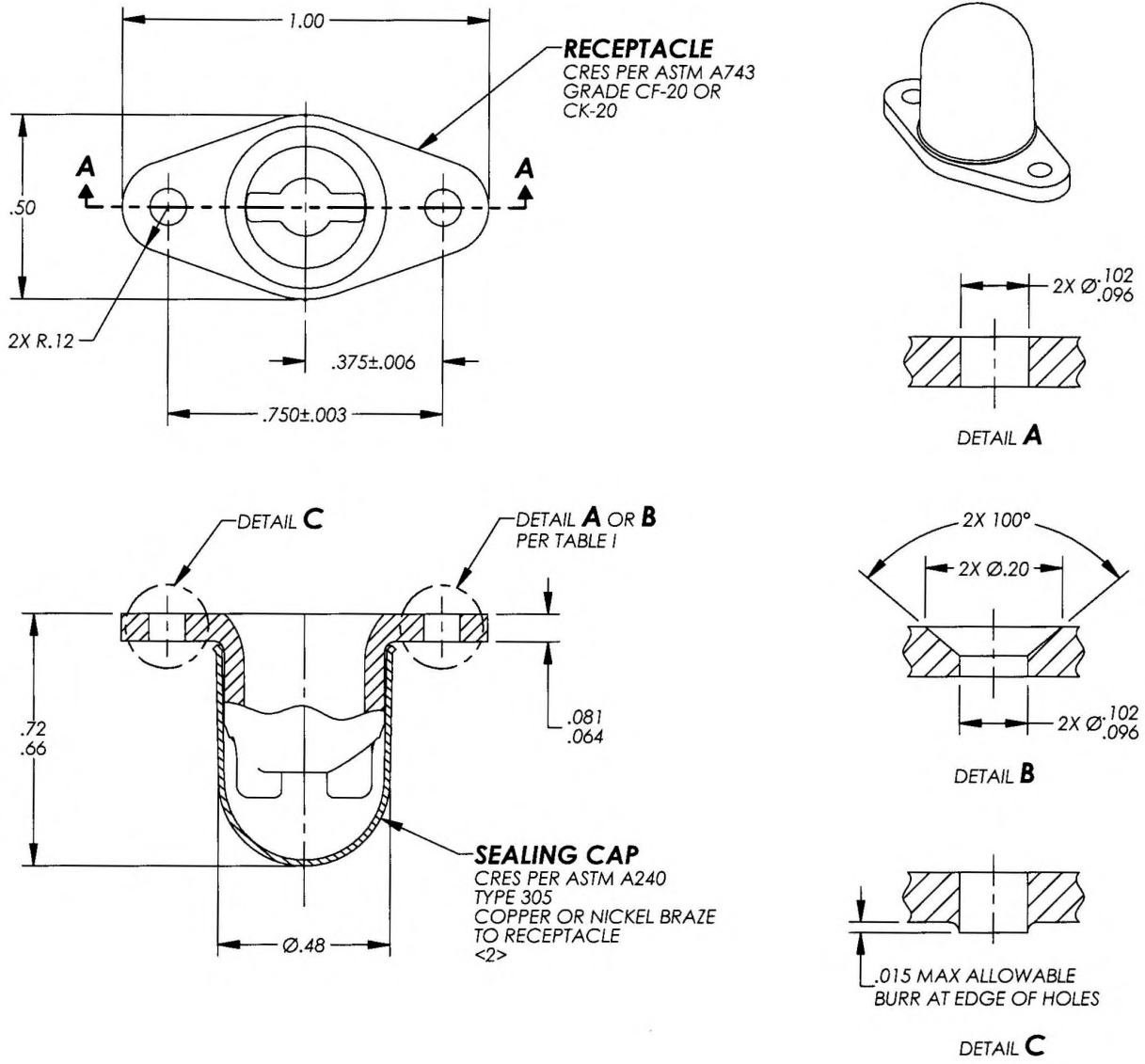



MANUFACTURE OF THE PROPRIETARY PARTS SHOWN HERE WITHOUT WRITTEN CONSENT IS ABSOLUTELY PROHIBITED

THIS DRAWING EMBODIES A CONFIDENTIAL, PROPRIETARY DESIGN & ALL DESIGN, MANUFACTURING PRODUCTION, USE & SALE RIGHTS REGARDING SAME ARE EXPRESSLY RESERVED.



NOTES: UNLESS OTHERWISE SPECIFIED

- FOR INSTALLATION DATA, SHEET PREPARATION & WHERE A PRESSURE SEAL IS REQUIRED, SEE CAMLOC INSTALLATION DWG NO. 26F11.
- <2> FOR 26R18-1-2AA; SEALING CAP IS ADHESIVE BONDED TO RECEPTACLE.

APPROVED DATE 5 MAY 1981	 ARCONIC Arconic Fastening Systems CAMLOC PRODUCTS 3012 W. LOMITA BLVD. TORRANCE, CA 90505-5103	TITLE: RECEPTACLE - RIGID ENCAPSULATED CRES	CURRENT DESIGN ACTIVITY: 71286	
REV. LETTER AND DATE D 29 FEB 2012		UNLESS OTHERWISE SPECIFIED DIMENSIONS ARE IN INCHES & ASME Y14.5M TOLERANCES:	ANGLES = ± 1° FRACTIONS = ± 1/32 DECIMALS .XX = ± .02 .XXX = ± .010	SALES DRAWING NO.
DAF NUMBER 98685				26R18 SHEET 1 OF 1