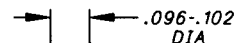
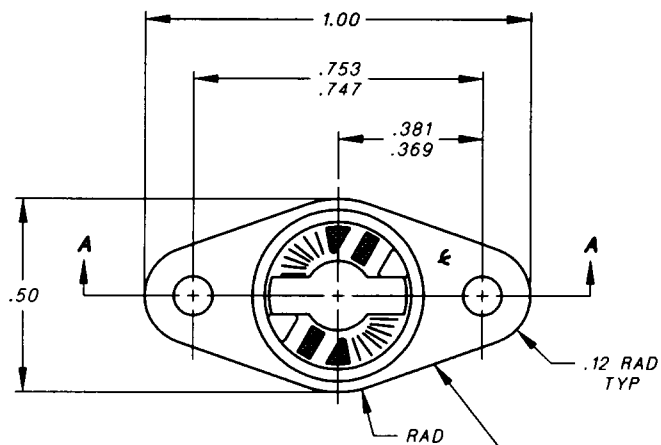
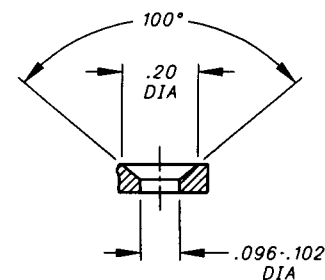


Vol-Shan • Tridair • Sorewoorp • Camloc • RAM

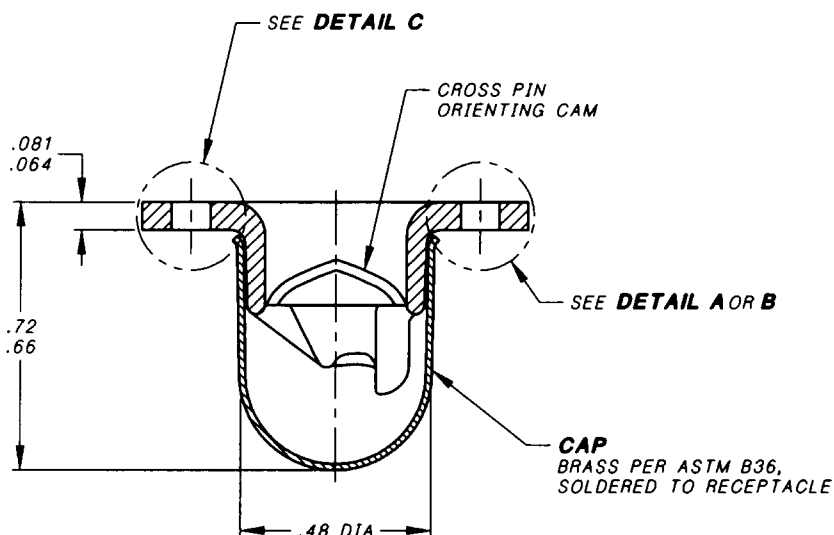


DETAIL A



DETAIL B

RECEPTACLE
SILICON BRONZE PER
ASTM B176,
ALLOY ZS 144A.



PART NUMBER	MOUNTING HOLES	FINISH	INTERNAL CROSSPIN ORIENTING CAM	WEIGHT LBS/100
26R16-1	DETAIL A	CADMIUM PLATE PER QQ-P-416, CLASS 2, TYPE II	AS SHOWN	1.63
26R16-1A	DETAIL A	ZINC PLATE PER ASTM B633, CLASS B, TYPE II WITH YELLOW CHROMATE	AS SHOWN	1.63
26R16-2	DETAIL B	CADMIUM PLATE PER QQ-P-416, CLASS 2, TYPE II	AS SHOWN	1.58
26R16-3	DETAIL A		NONE	1.63

NOTES: UNLESS OTHERWISE SPECIFIED.

- FOR INSTALLATION DATA, SHEET PREPARATION & WHERE A PRESSURE SEAL IS REQUIRED, SEE CAMLOC DRAWING NO. 26F11.
- MAXIMUM RECOMMENDED OPERATING TEMPERATURE FOR THIS PART IS 300°.
- INSIDE SURFACE OF ATTACHED BRASS CAP MAY NOT CONTAIN SPEC. PLATING BECAUSE OF CURRENT MASKING IN ELECTRO PLATING PROCESS CAUSED BY RESTRICTED RECEPTACLE END OPENING TO INTERNAL CAP SURFACE. INTERNAL CAP SURFACE MAY ALSO CONTAIN RESIDUE FROM TRAPPED RINSE WATER WHEN DRYING AFTER PLATING RINSE BECAUSE OF THE RESTRICTION.

UNLESS OTHERWISE SPECIFIED DIMENSIONS ARE IN INCHES & PER ANSI Y14.5M-82 TOLERANCES:
 ANGLES = ±1°
 FRACTIONS = ±1/32
 DECIMALS .XX = ±.02
 .XXX = ±.010

APPROVED DATE	26 MAR 98
REV. LETTER AND DATE	L 02 NOV 98
DAF NUMBER	DAF 42072

Fairchild AEROSPACE FASTENER DIVISION
3012 WEST LOMITA BOULEVARD
TORRANCE, CA 90505

CAGE CODE **71286**
CAMLOC PRODUCT

RECEPTACLE RIGID, ENCAPSULATED

26R16

001ds26944