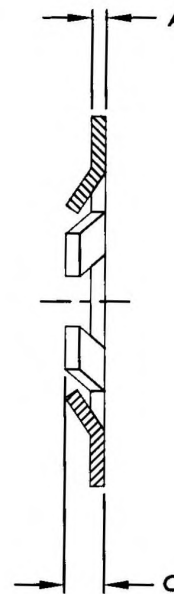
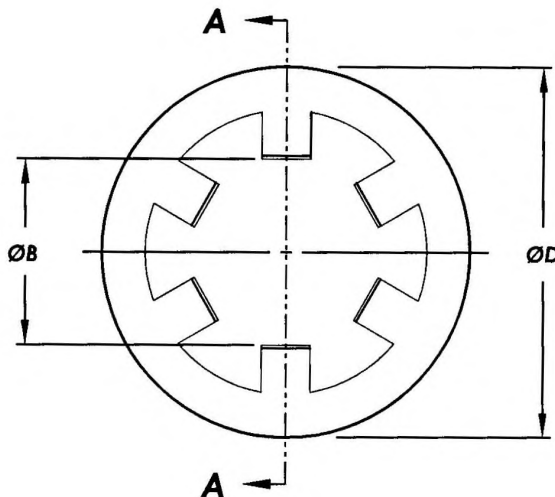


MANUFACTURE OF THE PROPRIETARY PARTS SHOWN HERE WITHOUT WRITTEN CONSENT IS ABSOLUTELY PROHIBITED



SECTION A-A

PART NO. CALLOUT:
2600 - LW ()


SUFFIX	A	ØB	C	ØD	MATERIAL	HEAT TREAT	FINISH
NONE							CADMIUM PLATE PER AMS-QQ-P-416 TYPE II, CLASS 2
M							CADMIUM PLATE PER AMS-C-81562, TYPE II, CLASS 2
-2							NICKEL PLATE PER AMS-QQ-N-290, CLASS 1, GRADE F
-3	.018 .012	.236 .228	.06 .02	.460	1074, 1075, OR 1095 CARBON STEEL PER ASTM A682 OR ASTM A684	HRC 42-51 PER AMS 2759	CADMIUM PLATE PER AMS-QQ-P-416 TYPE II, CLASS 2, DYED BLACK
-4							CADMIUM PLATE PER AMS-QQ-P-416 CLASS 2, CLEAR CHROMATE
-5							CADMIUM PLATE PER AMS-QQ-P-416 TYPE II, CLASS 1, GREEN CHROMATE
-6							ZINC PLATE PER ASTM B633, TYPE II, CLASS 8, YELLOW CHROMATE
-7	.013 .007	.232 .224	.024	.465 MAX	STAINLESS STEEL	HRC 42-50	PASSIVATE PER AMS2700
-8							BLACK CHROMIUM PER MIL-DTL-14538

THIS DRAWING EMPLOYS A CONFIDENTIAL, PROPRIETARY DESIGN & ALL DESIGN, MANUFACTURING PRODUCTION, USE & SALE RIGHTS REGARDING SAME ARE EXPRESSLY RESERVED.

NOTES: UNLESS OTHERWISE SPECIFIED

- INSTALLATION PROCEDURE PER CAMLOC CATALOG SECTION RETAINING RINGS.
- LOCK WASHER WILL RESIST A MINIMUM OF 100 LBS PUSHOUT FORCE AFTER INSTALLATION.

INTERIM DOCUMENT REVISION		
Rev.	Date	DAF#
NL	10/8/2018	117431

APPROVED DATE 11 SEP 97	 ARCONIC Arconic Fastening Systems CAMLOC PRODUCTS 3012 WEST. LOMITA BLVD. TORRANCE, CA 90505-5103	TITLE: WASHER LOCK RETAINING, STUD	CURRENT DESIGN ACTIVITY: CAGE CODE: 71286
REV LETTER AND DATE N 24 JAN 2013		UNLESS OTHERWISE SPECIFIED DIMENSIONS ARE IN INCHES & ASME Y14.5M TOLERANCES:	SALES DRAWING NO. 2600-LW
DAF NUMBER 103235		ANGLES = ± 1° FRACTIONS = ± 1/32 DECIMALS .XX = ± .02 .XXX = ± .010	SHEET 1 OF 1