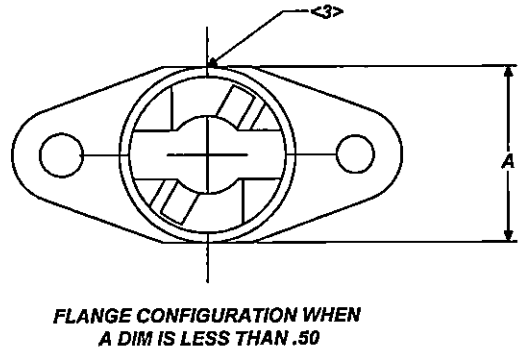
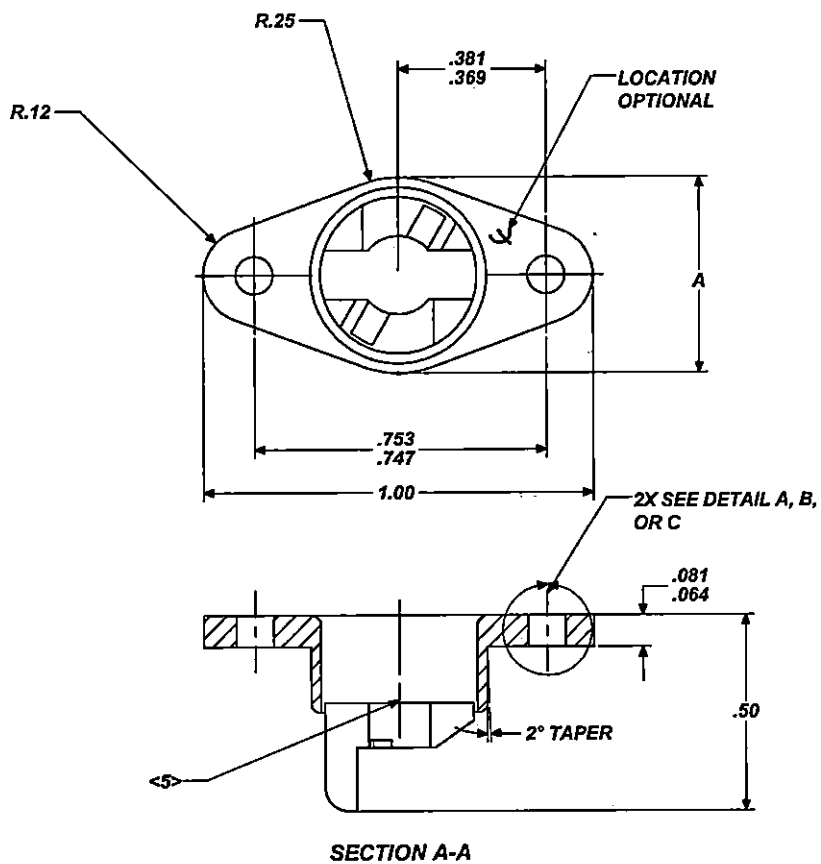
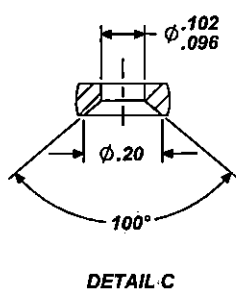
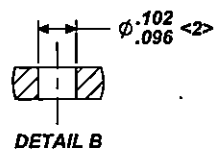
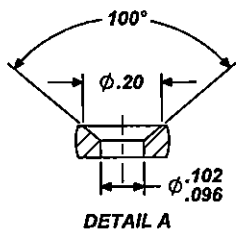




MANUFACTURE OF THE PROPRIETARY PARTS SHOWN HERE WITHOUT WRITTEN CONSENT OF HOWMET FASTENING SYSTEMS IS ABSOLUTELY PROHIBITED.

THIS DRAWING EMBODIES A CONFIDENTIAL PROPRIETARY DESIGN & ALL DESIGN, MANUFACTURING PRODUCTION, USE & SALE RIGHTS REGARDING SAME ARE EXPRESSLY RESERVED.



NOTES: UNLESS OTHER SPECIFIED

1. IT IS RECOMMENDED THAT 2S TYPE ALUMINUM RIVETS BE USED FOR INSTALLING RECEPTACLES & EXCESSIVE PRESSURE IN FORMING RIVET HEADS BE AVOIDED.
- <2> 212-12E-1 HOLES ARE .128-.134 DIAMETER.
- <3> DUE TO PART GEOMETRY, RECEPTACLE WALL MAY BE BROKEN OR SHOW VOIDS IN THIS AREA ON EITHER SIDE.
4. SEE DRAWINGS 212-12B & 212-12B-R FOR SIDE MOUNTIED RECEPTACLES.
- <5> SLIGHT SURFACE IMPERFECTIONS (BLISTER & POROSITY) AND LIGHT SPOTTING OR DISCOLORATION DUE TO DIE CASTING PROCESS IS ACCEPTABLE; SURFACE IMPERFECTIONS MAY INCLUDE TOOL MARKS
6. VISUAL INSPECTION PER AMS2175, TABLE 4, GRADE B

ORIGINAL DESIGN ACTIVITY: CAGE CODE 71286, CAMLOC PRODUCTS

APPROVED DATE 05 JUNE 98	CURRENT DESIGN ACTIVITY: Howmet Fastening Systems (HFS)	TITLE: RECEPTACLE	CURRENT DESIGN ACTIVITY: CAGE CODE: 71286
REV. LETTER AND DATE AS 11 NOV 2021	TORRANCE OPERATIONS		SALES DRAWING NO.
DAF NUMBER 121051	CAMLOC PRODUCTS 3014 W. LOMITA BLVD. TORRANCE, CA. 90505	UNLESS OTHERWISE SPECIFIED DIMENSIONS ARE IN INCHES & ASME Y14.5M TOLERANCES:	212-()
		ANGLES = ±1° DECIMALS .XX = ±.02 .XXX = ±.010	SHEET 1 OF 2

212-()



PART NO CALLOUT

212- ()

MANUFACTURE OF THE PROPRIETARY PARTS SHOWN HERE WITHOUT WRITTEN CONSENT OF HOWMET FASTENING SYSTEMS IS ABSOLUTELY PROHIBITED.

THIS DRAWING EMBODIES A CONFIDENTIAL, PROPRIETARY DESIGN & ALL DESIGN, MANUFACTURING PRODUCTION, USE & SALE RIGHTS REGARDING SAME ARE EXPRESSLY RESERVED.

PART NUMBER 212- ()		MATERIAL	FINISH	SUPPLEMENTARY COLOR (REF)	A	
DETAIL B	DETAIL A					
12	12D	SILICON BRONZE PER ASTM B176, ALLOY ZS 144A (REF: DOEHLER BRASS #4)	CADMIUM PLATE PER AMS-QQ-P-416, CLASS 2, TYPE II	YELLOW		
12A	12AD	ALUMINUM ALLOY PER ASTM B85, TYPE 360 OR 364 OR 383	ANODIZE PER AMS-A-8625 TYPE II	NONE	.50	
12A-H	12D-H		HARD COAT .001 THICK			
12E	12ED		ZINC ALLOY AG40A PER ASTM B86	ZINC PLATE PER ASTM B633, TYPE II CLASS 5		BLUE
12EN	12END					
12E-I	-	SILICON BRONZE PER ASTM B176, ALLOY ZS 144A (REF: DOEHLER BRASS #4)	NONE	NONE	.50	
<2>	-					
12F	-					
12N	12ND			CADMIUM PLATE PER AMS-QQ-P-416, CLASS 2, TYPE II	YELLOW	.451 .443
12NF	-			NONE		
12NG	-			COPPER PLATE PER AMS2418 CLASS 3 FOLLOWED BY TIN PLATE PER ASTM B545, .0003 MINIMUM THICK	NONE	.431 .423
12XNG	-			NONE		
12XNF	-			CADMIUM PLATE PER AMS-QQ-P-416, CLASS 2, TYPE II	YELLOW	
12XN	-					
12NS	12NSD		CRES PER ASTM A743, GRADE CF-20 OR CK-20 OR AMS5358	PASSIVATE PER AMS 2700	NONE	.451 .443
12S	12SD					
20	60	SILICON BRONZE PER ASTM B176, ALLOY ZS 144A (REF: DOEHLER BRASS #4)	CADMIUM PLATE PER AMS-QQ-P-416, CLASS 2, TYPE II	CADMIUM BRIGHT (CLEAR)	.50 .451 .443	
21	61					
22	62					
23	63				OLIVE DRAB	.50 .451 .443
24	64			CADMIUM PLATE PER AMS-QQ-P-416, CLASS 2, TYPE II	BLACK	.50
25	65			ZINC PLATE PER ASTM B633, TYPE II, CLASS 5	YELLOW	
26	66				OLIVE DRAB	
27	67			ZINC PLATE PER ASTM B633, TYPE I, CLASS 5	NONE	
28	68			ZINC CHROMATE PRIMER MIL-P-8585, TYPE I, APPLIED PER MIL-P-6808A	YELLOWISH GREEN	
29	69			NICKEL PLATE PER AMS-QQ-N-290, CLASS 1, GRADE F, SEMI-BRIGHT		
-	69FD			NONE		
30	70			CHROMATE PLATE PER AMS 2460 CLASS 1, TYPE I, PRIMARY COAT OF NICKEL & COPPER PER AMS-QQ-N-290 CLASS 1, GRADE G1	NONE	
31	71			TIN PLATE .0001 MIN THICK PER ASTM B545		
32	72		CRES PER ASTM A743, GRADE CF-20 OR CK-20 OR AMS5358	PASSIVATE PER AMS 2700		
33	73		ALUMINUM ALLOY PER ASTM B85, TYPE 360 OR 364	NONE	NONE	
34	74	SILICON BRONZE PER ASTM B176, ALLOY ZS 144A (REF: DOEHLER BRASS #4)	NICKEL PLATE PER AMS 2403	NONE		
-	75		ZINC PLATE PER ASTM B633, TYPE II, CLASS 5	GREEN	.451 .443	
37	77	CRES PER ASTM A743 GRADE CF-20 OR CK-20 OR AMS5358	ALUMINUM COATED PER SIGAL PROCESS ALUMINUM 2000	NONE	.50	
36	SEE DETAIL C			CADMIUM PLATE PER AM-QQ-P-416, CLASS 2 TYPE II	YELLOW	

ORIGINAL DESIGN ACTIVITY: CAGE CODE 71286, CAMLOC PRODUCTS

APPROVED DATE 05 JUNE 98	CURRENT DESIGN ACTIVITY: Howmet Fastening Systems (HFS)	TITLE: RECEPTACLE	CURRENT DESIGN ACTIVITY: CAGE CODE: 71286
REV. LETTER AND DATE AS 11 NOV 2021	TORRANCE OPERATIONS		SALES DRAWING NO.
DAF NUMBER 121051	CAMLOC PRODUCTS 3014 W. LOMITA BLVD. TORRANCE, CA. 90505	UNLESS OTHERWISE SPECIFIED DIMENSIONS ARE IN INCHES & ASME Y14.5M TOLERANCES:	212- ()
		ANGLES DECIMALS XX ±.1" XXX ±.02 ±.010	SHEET 2 OF 2

212- ()