

PLUG

SLEEVE

TABLE I

SIZE	THREAD PER MIL-S-8879	A DIA. HOLE	B BODY DIA.	C HEAD DIA.	D° HEAD ANGLE	E C'BORE DIA.	F FLANGE DIA.
440	.1120-40 UNJC-3B	.116	.216	.375	13°	.164	.167
632	.1380-32 UNJC-3B	.144	.278	.500	13°	.224	.227
832	.1640-32 UNJC-3B	.169	.278	.500	13°	.224	.227
1032	.1900-32 UNJF-3B	.194	.309	.625	13°	.256	.259
428	.2500-28 UNJF-3B	.257	.372	.750	14°	.313	.316
524	.3125-24 UNJF-3B	.318	.466	.875	14°	.375	.378

NOTES: (UNLESS OTHERWISE SPECIFIED)

1. HEAD THICKNESS: = .033 ON 524 SIZE.
2. SLEEVE AND PLUG FORM A TELESCOPIC PRESS FIT.
3. HEAD STYLES MAY BE COMBINED BETWEEN PLUGS AND SLEEVES WITHIN THE SAME SIZE.
4. AVAILABLE IN LONGER LENGTHS USING FACTORY INSTALLED SLEEVE EXTENSIONS.
5. CONSULT TRIDAIR ENGINEERING DEPARTMENT FOR AVAILABILITY OF OPTIONAL MATERIALS, FINISHES AND SIZES.
6. PART NUMBER CALLOUT EXAMPLE:  
 S 1 0 3 F 4 2 8 - 0 8  
 P 1 0 3 D 2 5 - 0  
 P 1 0 3 D 2 5 - 0  
 LENGTH DASH NUMBER (SEE SHEET 2)  
 SIZE: SEE TABLE 1  
 HEAD STYLE: D = FLUSH HEAD  
                   F = NON-FLUSH HEAD  
 TYPE: THREADED  
 MATERIAL: 0 = 2024-T4 OR T351 ALUMINUM ALLOY PER QQ-A-225/6, ANODIZE PER MIL-A-8625.  
                   6 = CRES STEEL PER ASTM-A-581/ASTM-A-582, AMS5640, PASSIVATE PER QQ-P-35,  
                   9 = CARBON STEEL PER ASTM-A-108/FED-STD-66, CADMIUM PLATE PER QQ-P-416,  
                                   TYPE II, CLASS 2.  
 SERIES 100: GROMMET TYPE PANEL INSERT  
 PART TYPE: P = PLUG  
                   S = SLEEVE

DRAWING PROVIDES FORM, FIT AND FUNCTION DATA. DO NOT ATTEMPT TO MANUFACTURE PRODUCT USING THIS DRAWING.

(WAS DRAWING NUMBER 2024)

<b>Deiron</b> Inserts DRAWN BY: T.C.    DATE: 2-2-78 MFG. ENGRG: R.P.    DATE: APPROVED BY: R.W.    DATE: PROJECT NUMBER: 77,289		TITLE: <h3 style="text-align: center;">INSERT GROMMET TYPE THREADED</h3> UNLESS OTHERWISE SPECIFIED: TOLERANCES: DECIMALS: .XX ± .02    MILLIMETERS ± 0.50 .XXX ± .010                       ± 0.25 ANGLES: ± 2°    SURFACE FINISH: 125 MICROINCHES		<b>Tridair</b> <small>a Remond Company</small> 3000 W. Lomita Blvd. Torrance, CA 90505 213/530-2220 <h3 style="text-align: center;">103 SERIES</h3> FSC: 29372    SHEET 1 OF 3	
--	--	--	--	--	--

REVISION A ECO 14002 2-11-85 J.S.

# LENGTH TABULATION

## 440,632,832&1032 SIZES

PLUG DASH NO.		-X	-0	-01	-1	-11	-2	-21	-3	-31
			.085	.100	.116	.131	.147	.162	.179	.194
-03										
-04										
-06										
-08	.415		.500	.515	.531	.546	.562	.577	.594	.609
-10	.540		.625	.640	.656	.671	.687	.702	.719	.734
-12	.665		.750	.765	.781	.796	.812	.827	.844	.859
-14	.790		.875	.890	.906	.921	.937	.952	.969	.984
-16	.915		1.000	1.015	1.031	1.046	1.062	1.077	1.094	1.109
-18	1.040		1.125	1.140	1.156	1.171	1.187	1.202	1.219	1.234

## 428 SIZE

PLUG DASH NO.		-X	-0	-01	-1	-11	-2	-21	-3	-31
			.120	.135	.151	.167	.183	.198	.214	.230
-03										
-04										
-06										
-08	.380		.500	.515	.531	.547	.563	.578	.594	.610
-10	.505		.625	.640	.656	.672	.688	.703	.719	.735
-12	.630		.750	.765	.781	.797	.813	.828	.844	.860
-14	.755		.875	.890	.906	.922	.938	.953	.969	.985
-16	.880		1.000	1.015	1.031	1.047	1.063	1.078	1.094	1.110
-18	1.005		1.125	1.140	1.156	1.172	1.188	1.203	1.219	1.235

## 524 SIZE

PLUG DASH NO.		-X	-0	-01	-1	-11	-2	-21	-3	-31
			.190	.206	.221	.237	.252	.268	.283	.299
-06										
-08										
-10	.435		.625	.640	.656	.672	.687	.703	.718	.734
-12	.560		.750	.766	.781	.797	.812	.828	.843	.859
-14	.685		.875	.891	.906	.922	.937	.953	.968	.984
-16	.810		1.000	1.016	1.031	1.047	1.062	1.078	1.093	1.109
-18	.935		1.125	1.141	1.156	1.172	1.187	1.203	1.218	1.234

**EXAMPLES:**

- 1.) REQUIREMENTS; 1032 THREAD SIZE, CRES STEEL, FLUSH HD. FOR A .500 OVERALL PANEL. SELECT FROM TABLE  
 -0 PLUG= P163D10-0  
 -08 SLEEVE= S163D1032-08.
- 2.) REQUIREMENTS; 428 THREAD SIZE, AL. ALLOY NON-FLUSH HEAD FOR A .625 OVERALL PANEL. SELECT FROM TABLE  
 -0 PLUG= P103F25-0  
 -10 SLEEVE= S103F428-10.

**4/5 PANEL THICKNES**

SELECT SLEEVE AND PLUG DASH NUMBERS BY DETERMINING THE THICKNESS CLOSEST TO BUT NOT GREATER THAN PANEL TO BE USED.

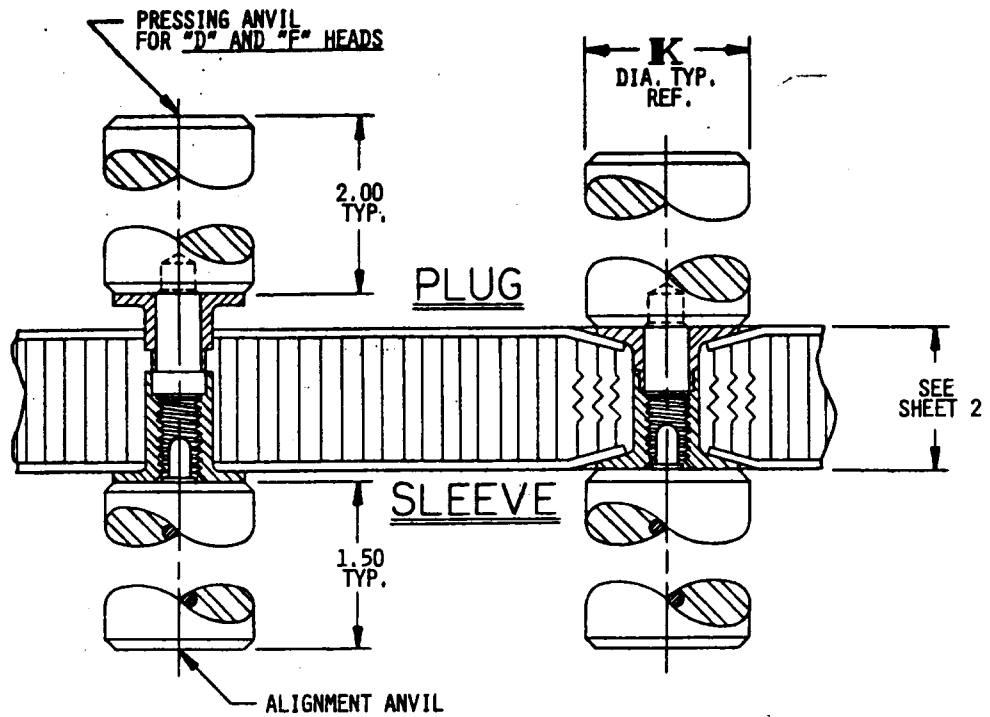
INDICATES NOT AVAILABLE

DRAWING PROVIDES FORM, FIT AND FUNCTION DATA. DO NOT ATTEMPT TO MANUFACTURE PRODUCT USING THIS DRAWING.

DRAWN BY: <b>T. CORONA</b>	DATE <b>2-2-78</b>	TITLE: <b>INSERT GROMMET TYPE THREADED</b>	<b>TRIDAIR INDUSTRIES</b> <small>Society Fasteners / a Reynolds Company</small> <b>Delron</b> inserts <small>3000 W. LOMITA BLVD., TORRANCE, CALIFORNIA 90505 (213) 530-2220</small>
MEG. ENGRG: <i>[Signature]</i>	DATE <b>2-7-78</b>	UNLESS OTHERWISE SPECIFIED: TOLERANCES: DECIMALS: .XX ± .02 .XXX ± .010 ANGLES: ± 2°	
APPROVED BY: <i>[Signature]</i>	DATE <b>2-7-78</b>	MILLIMETERS ± 0.50 SURFACE FINISH 125 MICROINCHES	<b>103 SERIES</b> FSC: 29372     SHEET 2 OF 3
APPROVED BY: <i>[Signature]</i>	DATE <b>2-7-78</b>		
PROJECT NUMBER <b>77-289</b>			

REVISION  
N/C ECO 5196. 2-2-78  
T.C.F.

# INSTALLATION



SIZE	INSTALLATION HOLE DIA.	FOR "D" AND "F" HEAD STYLES			K DIA. TYP. REF.
		TOOL KIT NO.	ANVIL TYPE		
			PRESSING	ALIGNING	
440	.228 (1)	1617-0	1617-0-1	1617-0-2	.37
632	.290 (L)	1617-1	1613-1	1617-1-2	.50
832	.290 (L)	1617-2	1614-2-1	1617-2-2	.56
1032	.323 (P)	1617-3	1614-3-1	1617-3-2	.62
428	.390 (25/64)	1617-4	1614-4-1	1617-4-2	.75
524	.484 (31/64)	1617-5	1614-5-1	1617-5-2	.87

### INSTALLATION NOTES:

1. INSTALLATION PRESSURE IS A VARIABLE DEPENDING UPON TYPE OF PANEL BEING USED.
2. ANVILS ARE LOW CARBON STEEL WITH A COMMERCIAL CORROSION INHIBITING COATING.

DRAWING PROVIDES FORM, FIT AND FUNCTION DATA. DO NOT ATTEMPT TO MANUFACTURE PRODUCT USING THIS DRAWING.

<b>Delron</b> <small>Inserts</small>		TITLE: <b>INSERT GROMMET TYPE THREADED</b>		<b>Tridair</b> <small>a Reznord Company 3000 W. Lomita Blvd. Torrance, CA 90505 213/530-2220</small>	
DRAWN BY: T. C.	DATE 2-2-78	UNLESS OTHERWISE SPECIFIED: TOLERANCES: DECIMALS: .XX ± .02 XXX ± .010 ANGLES:       ± 2°		SURFACE FINISH 125 MICROINCHES	
MFG. ENGRG: R. P.	DATE			<b>103 SERIES</b>	
APPROVED BY: R. W.	DATE			<b>FSC: 29372</b> SHEET 3 OF 3	
PROJECT NUMBER 77-289					

REVISION A