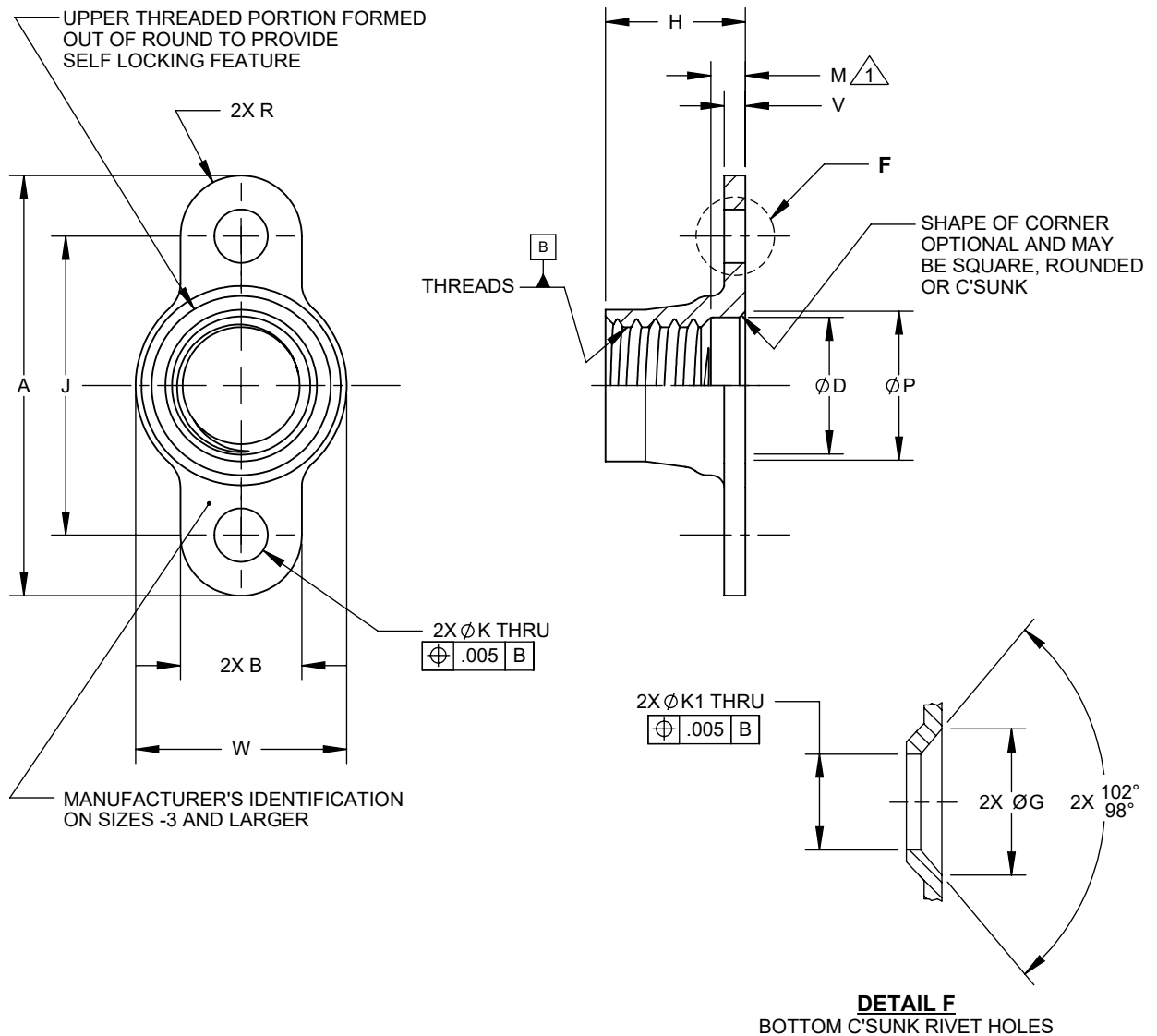


MANUFACTURE OF THE PROPRIETARY PARTS SHOWN HERE WITHOUT WRITTEN
CONSENT OF HOWMET FASTENING SYSTEMS IS ABSOLUTELY PROHIBITED.THIS DRAWING EMBODIES HOWMET FASTENING SYSTEMS CONFIDENTIAL, PROPRIETARY DESIGN & ALL DESIGN,
MANUFACTURING PRODUCTION, USE & SALE RIGHTS REGARDING SAME ARE EXPRESSLY RESERVED.

HFS PART NO.	THREADS PER AS8879	A MAX	B	Ø D MIN	Ø G ±.010	H MAX	J ±.002	Ø K +.005 -.000	Ø K +.015 -.000	M MIN	Ø P MAX	R MIN	V MAX	W
MK1000-	04	.1120-40UNJC-3B	.630	.260 .178	.116	.143	.406				.166	.089	.040	.260 .140
	06	.1380-32UNJC-3B	.661	.142		.171	.437			----	.206			.265 .195
	08	.1640-32UNJC-3B	.692	.168	.200	.250	.468	.098	.098		.248		.047	.297 .230
	3	.1900-32UNJF-3B	.724	.260 .210	.194		.500				.274	.100		.328 .298
	4	.2500-28UNJF-3B	.786	.254		.281	.562			.062	.344		.055	.414 .380
	5	.3125-24UNJF-3B	1.006	.290 .250	.317	.328	.718	.130	.130		.417	.125	.065	.505 .475
	6	.3750-24UNJF-3B	1.116	.379	.203	.344	.828				.505		.075	.614 .580

THIRD ANGLE
PROJECTIONEAR EXPORT CONTROLLED TECHNICAL DATA: DISTRIBUTION LIMITED TO U.S. PERSONS OR THOSE NON-U.S. PERSONS
COVERED BY AN APPROPRIATE EXPORT LICENSE OR ALLOWED FOR BY THE APPROPRIATE REGULATIONS, ECCN: EAR99.

APPROVED DATE

01MAR2018

CURRENT DESIGN ACTIVITY:

Howmet Fastening Systems
800 S State College Boulevard
Fullerton, California, 92831<http://www.hfs.howmet.com>

TITLE:

NUT - ANCHOR, 2 LUG,
FIXED, SELF LOCKING
MINIATUREUNLESS OTHERWISE SPECIFIED, DIMENSIONS ARE
IN INCHES & TO ASME Y14.5-2018 TOLERANCES:
DECIMALS = ±.015; ANGLES = ±2°

CAGE CODE: 15653

SALES DRAWING No.

MK1000-()

SHEET 1 OF 2

FILED AS:

s_MK1000-()

MANUFACTURE OF THE PROPRIETARY PARTS SHOWN HERE WITHOUT WRITTEN
CONSENT OF HOWMET FASTENING SYSTEMS IS ABSOLUTELY PROHIBITED.THIS DRAWING EMBODIES HOWMET FASTENING SYSTEMS CONFIDENTIAL, PROPRIETARY DESIGN & ALL DESIGN,
MANUFACTURING PRODUCTION, USE & SALE RIGHTS REGARDING SAME ARE EXPRESSLY RESERVED.


MATERIAL: C1050 CARBON STEEL PER AMS5085 (UNS G10500).

HEAT TREAT: Rc 49 MAX.

FINISH: MK1000-(*):
CADMIUM PLATE PER AMS-QQ-P-416 TYTPE II, CLASS 2, PLUS
SOLID FILM LUBE PER AS5272 TYPE I.MK1000-(*):CW:
CADMIUM PLATE PER AMS-QQ-P-416 TYPE II, CLASS 2, PLUS
POLYETHYLENE GLYCOL 8000.

PERFORMANCE: NASM25027.

VARIATIONS: ADD BC FOR BOTTOM C'SUNK RIVET HOLES.
EXAMPLE: MK1000-4BC OR MK1000-4BCCW.

- NOTES:  1. COUNTERBORE/COUNTERSINK:
FOR SIZES -.06 AND SMALLER: COUNTERSINK WITHIN THE LIMITS OF ØD AND ØP.
FOR SIZES -.08 AND LARGER: COUNTERBORE ØD BY .062 MIN THREAD RELIEF.
2. UNLESS OTHERWISE SPECIFIED:
A) DIMENSIONS APPLY AFTER FINISH, BUT BEFORE LUBRICATION.
B) SURFACE TEXTURE TO BE 125 MICROINCHES, PER ASME B46.1.
C) REMOVE ALL BURRS AND SHARP EDGES.

THIRD ANGLE
PROJECTION EAR EXPORT CONTROLLED TECHNICAL DATA: DISTRIBUTION LIMITED TO U.S. PERSONS OR THOSE NON-U.S. PERSONS
COVERED BY AN APPROPRIATE EXPORT LICENSE OR ALLOWED FOR BY THE APPROPRIATE REGULATIONS, ECCN: EAR99.

APPROVED DATE

01MAR2018

REV. LETTER AND DATE:

B 06APR2020

CUSTOMER:

CURRENT DESIGN ACTIVITY:

Howmet Fastening Systems
800 S State College Boulevard
Fullerton, California, 92831<http://www.hfs.howmet.com>

TITLE:

NUT - ANCHOR, 2 LUG,
FIXED, SELF LOCKING
MINIATUREUNLESS OTHERWISE SPECIFIED, DIMENSIONS ARE
IN INCHES & TO ASME Y14.5-2018 TOLERANCES:
DECIMALS = ±.015; ANGLES = ±2°

CAGE CODE: 15653

SALES DRAWING No.

MK1000-()

SHEET 2 OF 2

FILED AS:

s_MK1000-()