

MANUFACTURE OF THE PROPRIETARY PARTS SHOWN HERE WITHOUT WRITTEN CONSENT IS ABSOLUTELY PROHIBITED

THIS DRAWING EMBODIES A CONFIDENTIAL, PROPRIETARY DESIGN & ALL DESIGN, MANUFACTURING PRODUCTION, USE & SALE RIGHTS REGARDING SAME ARE EXPRESSLY RESERVED.

PROJECT NUMBER: 13PNL079
S45362

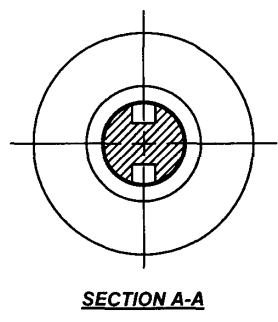
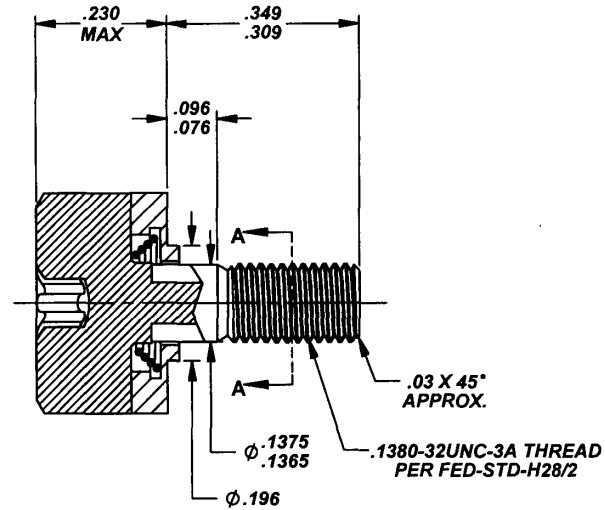
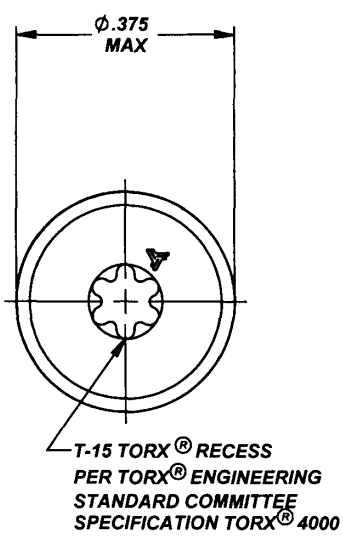


FIGURE 1 - INSTALLED ASSEMBLY

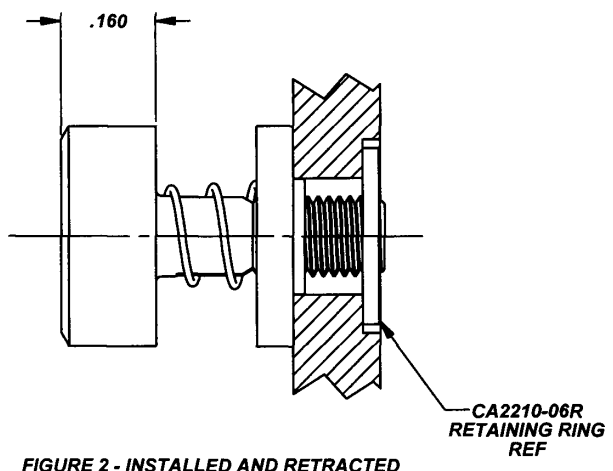


FIGURE 2 - INSTALLED AND RETRACTED

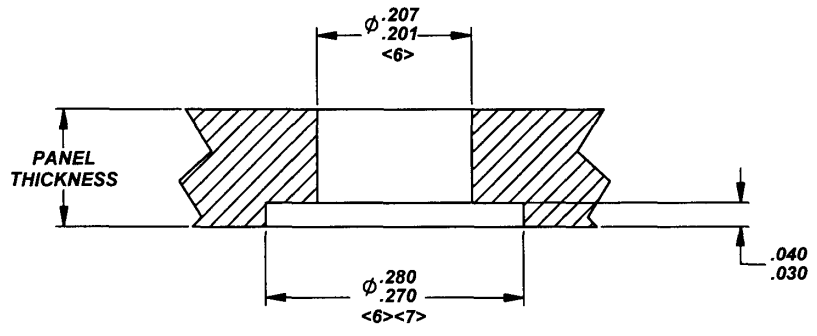


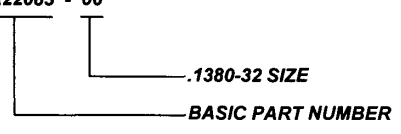
FIGURE 3 - PANEL PREPERATION

INTERIM DOCUMENT REVISION		
Rev.	Date	DAF#
NEW1	10/8/2018	117431

APPROVED DATE 3 OCT 13	CURRENT DESIGN ACTIVITY: ARCONIC Arconic Fastening Systems	TITLE: CAPTIVE SCREW ASSEMBLY SELF-RETRACTING "CRIMPING" TYPE, .1380-32 SIZE	CURRENT DESIGN ACTIVITY: CAGE CODE: 29372
REV. LETTER AND DATE NEW 3 OCT 13	TRIDAIR PRODUCTS 300 W. LOMITA BLVD. TORRANCE, CA. 90505	UNLESS OTHERWISE SPECIFIED DIMENSIONS ARE IN INCHES & ASME Y14.5M TOLERANCES:	SALES DRAWING NO. CA22083-06
DAF NUMBER DAF 105712		ANGLES = ±3° DECIMALS .XX = ±.02 .XXX = ±.010	SHEET 1 OF 2

NOTES; UNLESS OTHERWISE SPECIFIED:

1. MATERIAL:
 - 1.1 SCREW: A286 CRES PER AMS5731, AMS5732.
 - 1.2 HOUSING: 300 SERIES CRES PER AMS5640, ASTM-A555, ASTM-A581.
 - 1.3 SPRING: 302 CRES PER ASTM-A313.
2. HEAT TREAT:
 - 2.1 PER AMS2759 TO MEET MECHANICAL PROPERTIES.
3. FINISH:
 - 3.1 ALL COMPONENTS PASSIVATED PER AMS2700.
4. RECOMMENDED SEATING TORQUE 16 IN-LBS.
5. THIS SCREW ASSEMBLY IS DESIGNED TO BE USED WITH CA2210-06R RETAINING RING TO CAPTIVATE TO PANEL.
- <6> WHEN SCREW FLOAT IS REQUIRED (FOR PROTRUDING HEAD SCREWS). THE THRU HOLE AND THE RETINING RING DIAMETERS MAY BE INCREASED TO ACCOMODATE SIDE-TO-SIDE MOVEMENT OF THE SCREW. CARE SHOULD BE TAKEN SO THAT THE INCREASED HOLE DIAMETERS DO NOT ALLOW EITHER THE SCREW HEAD OR THE RETAINING RING TO FALL INTO OR THRU THE THRU DIAMETER HOLE.
- <7> THE RETAINING RING CAVITY MAY BE IN THE BOTTOM SURFACE OF THE TOP PANEL AS SHOWN OR IN THE TOP SURFACE OF THE SUBSTRUCTURE AT CUSTOMER OPTION.
8. REFER TO TRIDAIR DRAWING CA2210T-() FOR INSTALLATION PROCEDURE AND REQUIRED TOOL.
9. IDENTIFICATION SHALL INCLUDE "TRIDAIR" NAME OR LOGO, RAISED OR DEPRESSED .010 MAXIMUM DEPTH. MARKING METHOD AND ORIENTATION OPTIONAL.
10. TORX® IS A REGISTERED TRADEMARK OF ACUMENT® GLOBAL TECHNOLOGIES.
11. PART CALLOUT EXAMPLE:
 - 11.1 CA22083 - 06



MANUFACTURE OF THE PROPRIETARY PARTS SHOWN HERE WITHOUT WRITTEN CONSENT IS ABSOLUTELY PROHIBITED

THIS DRAWING EMBODIES A CONFIDENTIAL, PROPRIETARY DESIGN & ALL DESIGN, MANUFACTURING PRODUCTION, USE & SALE RIGHTS REGARDING SAME ARE EXPRESSLY RESERVED.

PROJECT NUMBER: 13PNL.079
S45362

INTERIM DOCUMENT REVISION		
Rev.	Date	DAF#
NEW	10/8/2018	117431

<p>APPROVED DATE 3 OCT 13</p> <hr/> <p>REV. LETTER AND DATE NEW 3 OCT 13</p> <hr/> <p>DAF NUMBER DAF 105712</p>	<p>CURRENT DESIGN ACTIVITY:</p> <p>ARCONIC Arconic Fastening Systems</p> <p>TRIDAIR PRODUCTS 300 W. LOMITA BLVD. TORRANCE, CA. 90505</p>	<p>TITLE: CAPTIVE SCREW ASSEMBLY SELF-RETRACTING "CRIMPING" TYPE, .1380-32 SIZE</p> <hr/> <p>UNLESS OTHERWISE SPECIFIED DIMENSIONS ARE IN INCHES & ASME Y14.5M TOLERANCES:</p> <table style="font-size: small;"> <tr> <td>ANGLES</td> <td>= ±3°</td> </tr> <tr> <td>DECIMALS</td> <td>.XX = ±.02</td> </tr> <tr> <td></td> <td>.XXX = ±.010</td> </tr> </table>	ANGLES	= ±3°	DECIMALS	.XX = ±.02		.XXX = ±.010	<p>CURRENT DESIGN ACTIVITY:</p> <p>CAGE CODE: 29372</p> <hr/> <p>SALES DRAWING NO.</p> <p style="font-size: large; font-weight: bold;">CA22083-06</p> <hr/> <p style="text-align: right;">SHEET 2 OF 2</p>
ANGLES	= ±3°								
DECIMALS	.XX = ±.02								
	.XXX = ±.010								