

Vol-Shan · Tridair · Screwcorp

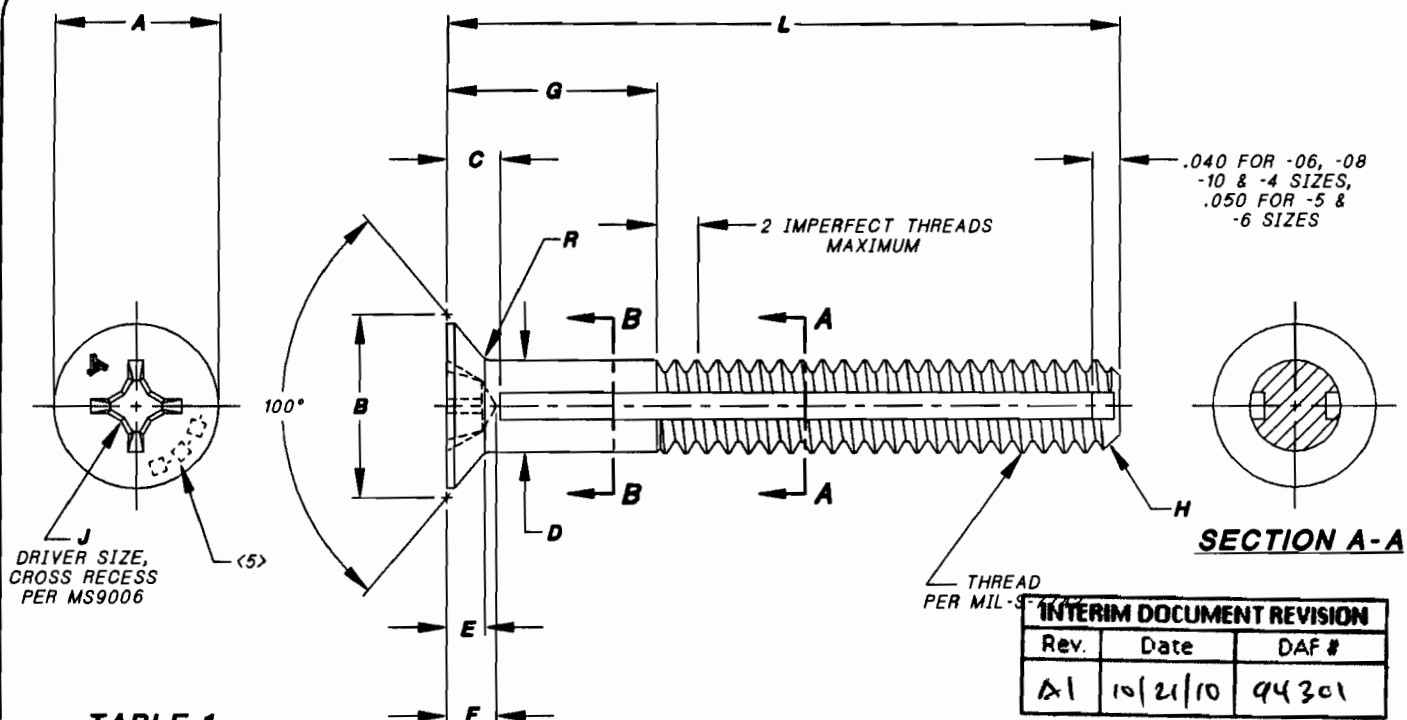


TABLE 1

FIRST DASH NUMBER	THREAD SIZE	A DIA MIN	B DIA	C MAX	D DIA	E REF	F MAX
-06	.138-32UNC-3A	.231	.279 .267	.095	.1375 .1365	.057	.086
-08	.164-32UNC-3A	.270	.332 .319	.100	.1635 .1625	.068	.101
-10	.190-32UNF-3A	.322	.385 .371	.100	.1895 .1885	.080	.116
-4	.250-2BUNF-3A	.442	.507 .491	.140	.2495 .2485	.106	.135
-5	.3125-24UNF-3A	.568	.635 .617	.165	.3120 .3110	.133	.168
-6	.375-24UNF-3A	.694	.762 .742	.195	.3745 .3735	.160	.193

TABLE 2

FIRST DASH NUMBER	G GRIP	H x 45 APPROX.	J SIZE	L LENGTH	R RADIUS	ULTIMATE TENSILE STRENGTH MIN <9>	ULTIMATE SINGLE SHEAR STRENGTH MIN <9> SECTION A-A	ULTIMATE SINGLE SHEAR STRENGTH MIN <9><10> SECTION B-B
-06	SEE SHEETS 2, 3, & 4	.030	#2	SEE SHEETS 2, 3, & 4	.020 .010	920 LBS	620 LBS	920 LBS
-08		.030	#2			1,450 LBS	980 LBS	1,335 LBS
-10		.030	#2			2,120 LBS	1,430 LBS	1,850 LBS
-4		.035	#3			4,040 LBS	2,740 LBS	3,390 LBS
-5		.040	#4			6,470 LBS	4,390 LBS	5,360 LBS
-6		.040	#4			9,950 LBS	6,750 LBS	7,875 LBS

PROJECT NUMBER: 95-063

APPROVED DATE	17 NOV 94 U-5
REV. LETTER AND DATE	A 1 MAR 00
DAF NUMBER	DAF 47029 CA

Fairchild FAIRCHILD FASTENERS ENGINEERING CENTER
 3000 WEST LOMITA BOULEVARD
 TORRANCE, CA 90505

CAGE CODE **29372**
 TRIDAIR PRODUCT

SCREW, CAPTIVE, 100° HEAD, CRES, 140 KSI

CA22019-()-()-()
 SHEET 1 OF 4

SCANNED

TABLE 3

	G GRIP						L	
	.125	.156	.187	.218	.250	.281	.312	LENGTH
.138-32 SIZE FIRST DASH NO.-06	-4-5	-5-5						.312
	-4-6	-5-6	-6-6	-7-6				.375
	-4-7	-5-7	-6-7	-7-7	-8-7			.437
	-4-8	-5-8	-6-8	-7-8	-8-8	-9-8		.500
	-4-9	-5-9	-6-9	-7-9	-8-9	-9-9	-10-9	.562
	-4-10	-5-10	-6-10	-7-10	-8-10	-9-10	-10-10	.625
	-4-11	-5-11	-6-11	-7-11	-8-11	-9-11	-10-11	.687
	-4-12	-5-12	-6-12	-7-12	-8-12	-9-12	-10-12	.750
	-4-13	-5-13	-6-13	-7-13	-8-13	-9-13	-10-13	.812
	-4-14	-5-14	-6-14	-7-14	-8-14	-9-14	-10-14	.875
	-4-15	-5-15	-6-15	-7-15	-8-15	-9-15	-10-15	.937
	-4-16	-5-16	-6-16	-7-16	-8-16	-9-16	-10-16	1.000
	-4-17	-5-17	-6-17	-7-17	-8-17	-9-17	-10-17	1.062
	-4-18	-5-18	-6-18	-7-18	-8-18	-9-18	-10-18	1.125
	-4-19	-5-19	-6-19	-7-19	-8-19	-9-19	-10-19	1.187
	-4-20	-5-20	-6-20	-7-20	-8-20	-9-20	-10-20	1.250
	-4-21	-5-21	-6-21	-7-21	-8-21	-9-21	-10-21	1.312
	-4-22	-5-22	-6-22	-7-22	-8-22	-9-22	-10-22	1.375
	-4-23	-5-23	-6-23	-7-23	-8-23	-9-23	-10-23	1.437
	-4-24	-5-24	-6-24	-7-24	-8-24	-9-24	-10-24	1.500
	-4-25	-5-25	-6-25	-7-25	-8-25	-9-25	-10-25	1.562
	-4-26	-5-26	-6-26	-7-26	-8-26	-9-26	-10-26	1.625
	-4-27	-5-27	-6-27	-7-27	-8-27	-9-27	-10-27	1.687
	-4-28	-5-28	-6-28	-7-28	-8-28	-9-28	-10-28	1.750

TABLE 4

	G GRIP						L	
	.125	.156	.187	.218	.250	.281	.312	LENGTH
.164-32 SIZE FIRST DASH NO.-08	-4-5	-5-5						.312
	-4-6	-5-6	-6-6	-7-6				.375
	-4-7	-5-7	-6-7	-7-7	-8-7			.437
	-4-8	-5-8	-6-8	-7-8	-8-8	-9-8		.500
	-4-9	-5-9	-6-9	-7-9	-8-9	-9-9	-10-9	.562
	-4-10	-5-10	-6-10	-7-10	-8-10	-9-10	-10-10	.625
	-4-11	-5-11	-6-11	-7-11	-8-11	-9-11	-10-11	.687
	-4-12	-5-12	-6-12	-7-12	-8-12	-9-12	-10-12	.750
	-4-13	-5-13	-6-13	-7-13	-8-13	-9-13	-10-13	.812
	-4-14	-5-14	-6-14	-7-14	-8-14	-9-14	-10-14	.875
	-4-15	-5-15	-6-15	-7-15	-8-15	-9-15	-10-15	.937
	-4-16	-5-16	-6-16	-7-16	-8-16	-9-16	-10-16	1.000
	-4-17	-5-17	-6-17	-7-17	-8-17	-9-17	-10-17	1.062
	-4-18	-5-18	-6-18	-7-18	-8-18	-9-18	-10-18	1.125
	-4-19	-5-19	-6-19	-7-19	-8-19	-9-19	-10-19	1.187
	-4-20	-5-20	-6-20	-7-20	-8-20	-9-20	-10-20	1.250
	-4-21	-5-21	-6-21	-7-21	-8-21	-9-21	-10-21	1.312
	-4-22	-5-22	-6-22	-7-22	-8-22	-9-22	-10-22	1.375
	-4-23	-5-23	-6-23	-7-23	-8-23	-9-23	-10-23	1.437
	-4-24	-5-24	-6-24	-7-24	-8-24	-9-24	-10-24	1.500
	-4-25	-5-25	-6-25	-7-25	-8-25	-9-25	-10-25	1.562
	-4-26	-5-26	-6-26	-7-26	-8-26	-9-26	-10-26	1.625
	-4-27	-5-27	-6-27	-7-27	-8-27	-9-27	-10-27	1.687
	-4-28	-5-28	-6-28	-7-28	-8-28	-9-28	-10-28	1.750

INTERIM DOCUMENT REVISION

Rev.	Date	DAF #
A1	10/21/10	94301

PROJECT NUMBER: 95-063

APPROVED DATE	17 NOV 94 <i>U.S.</i>
REV. LETTER AND DATE	A 1 MAR 00
DAF NUMBER	DAF 47029

Fairchild FAIRCHILD FASTENERS ENGINEERING CENTER
 3000 WEST LOMITA BOULEVARD
 TORRANCE, CA 90505

CAGE CODE **29372**
 TRIDAIR PRODUCT

SCREW, CAPTIVE, 100° HEAD, CRES, 140 KSI

CA22019-()-()-()
 SHEET 2 OF 4

SCREW

Vol-Shan · Tridair · Screwcorp

TABLE 5

	G GRIP							L
	.125	.156	.187	.218	.250	.281	.312	LENGTH
.190-32 SIZE FIRST DASH NO.-10	-4-5	-5-5						.312
	-4-6	-5-6	-6-6	-7-6				.375
	-4-7	-5-7	-6-7	-7-7	-8-7			.437
	-4-8	-5-8	-6-8	-7-8	-8-8	-9-8		.500
	-4-9	-5-9	-6-9	-7-9	-8-9	-9-9	-10-9	.562
	-4-10	-5-10	-6-10	-7-10	-8-10	-9-10	-10-10	.625
	-4-11	-5-11	-6-11	-7-11	-8-11	-9-11	-10-11	.687
	-4-12	-5-12	-6-12	-7-12	-8-12	-9-12	-10-12	.750
	-4-13	-5-13	-6-13	-7-13	-8-13	-9-13	-10-13	.812
	-4-14	-5-14	-6-14	-7-14	-8-14	-9-14	-10-14	.875
	-4-15	-5-15	-6-15	-7-15	-8-15	-9-15	-10-15	.937
	-4-16	-5-16	-6-16	-7-16	-8-16	-9-16	-10-16	1.000
	-4-17	-5-17	-6-17	-7-17	-8-17	-9-17	-10-17	1.062
	-4-18	-5-18	-6-18	-7-18	-8-18	-9-18	-10-18	1.125
	-4-19	-5-19	-6-19	-7-19	-8-19	-9-19	-10-19	1.187
	-4-20	-5-20	-6-20	-7-20	-8-20	-9-20	-10-20	1.250
	-4-21	-5-21	-6-21	-7-21	-8-21	-9-21	-10-21	1.312
	-4-22	-5-22	-6-22	-7-22	-8-22	-9-22	-10-22	1.375
	-4-23	-5-23	-6-23	-7-23	-8-23	-9-23	-10-23	1.437
	-4-24	-5-24	-6-24	-7-24	-8-24	-9-24	-10-24	1.500
	-4-25	-5-25	-6-25	-7-25	-8-25	-9-25	-10-25	1.562
	-4-26	-5-26	-6-26	-7-26	-8-26	-9-26	-10-26	1.625
	-4-27	-5-27	-6-27	-7-27	-8-27	-9-27	-10-27	1.687
	-4-28	-5-28	-6-28	-7-28	-8-28	-9-28	-10-28	1.750

TABLE 6

	G GRIP						L
	.156	.187	.218	.250	.281	.312	LENGTH
.250-28 SIZE FIRST DASH NO.-4	-5-7	-6-7	-7-7	-8-7			.437
	-5-8	-6-8	-7-8	-8-8	-9-8		.500
	-5-9	-6-9	-7-9	-8-9	-9-9	-10-9	.562
	-5-10	-6-10	-7-10	-8-10	-9-10	-10-10	.625
	-5-11	-6-11	-7-11	-8-11	-9-11	-10-11	.687
	-5-12	-6-12	-7-12	-8-12	-9-12	-10-12	.750
	-5-13	-6-13	-7-13	-8-13	-9-13	-10-13	.812
	-5-14	-6-14	-7-14	-8-14	-9-14	-10-14	.875
	-5-15	-6-15	-7-15	-8-15	-9-15	-10-15	.937
	-5-16	-6-16	-7-16	-8-16	-9-16	-10-16	1.000
	-5-17	-6-17	-7-17	-8-17	-9-17	-10-17	1.062
	-5-18	-6-18	-7-18	-8-18	-9-18	-10-18	1.125
	-5-19	-6-19	-7-19	-8-19	-9-19	-10-19	1.187
	-5-20	-6-20	-7-20	-8-20	-9-20	-10-20	1.250
	-5-21	-6-21	-7-21	-8-21	-9-21	-10-21	1.312
	-5-22	-6-22	-7-22	-8-22	-9-22	-10-22	1.375
	-5-23	-6-23	-7-23	-8-23	-9-23	-10-23	1.437
	-5-24	-6-24	-7-24	-8-24	-9-24	-10-24	1.500
	-5-25	-6-25	-7-25	-8-25	-9-25	-10-25	1.562
	-5-26	-6-26	-7-26	-8-26	-9-26	-10-26	1.625
	-5-27	-6-27	-7-27	-8-27	-9-27	-10-27	1.687
	-5-28	-6-28	-7-28	-8-28	-9-28	-10-28	1.750

INTERIM DOCUMENT REVISION		
Rev.	Date	DAF #
A1	10/21/10	9430

SCANNED

513599 PROJECT NUMBER: 95-063

APPROVED DATE 17 NOV 94 <i>U.S.</i>	 FAIRCHILD FASTENERS ENGINEERING CENTER 3000 WEST LOMITA BOULEVARD TORRANCE, CA 90505	CAGE CODE 29372 TRIDAIR PRODUCT
REV. LETTER AND DATE A 1 MAR 00		SCREW, CAPTIVE, 100° HEAD, CRES, 140 KSI
DAF NUMBER DAF 47023 <i>GA</i>		

Vol-Shan · Tridair · Sorewcorp

TABLE 7

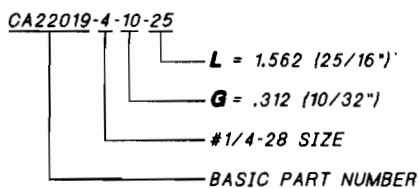
.3125-24 SIZE FIRST DASH NO.-5	G GRIP					L
	.187	.218	.250	.281	.312	LENGTH
-6-7	-7-7					.437
-6-8	-7-8	-8-8	-9-8			.500
-6-9	-7-9	-8-9	-9-9	-10-9		.562
-6-10	-7-10	-8-10	-9-10	-10-10		.625
-6-11	-7-11	-8-11	-9-11	-10-11		.687
-6-12	-7-12	-8-12	-9-12	-10-12		.750
-6-13	-7-13	-8-13	-9-13	-10-13		.812
-6-14	-7-14	-8-14	-9-14	-10-14		.875
-6-15	-7-15	-8-15	-9-15	-10-15		.937
-6-16	-7-16	-8-16	-9-16	-10-16		1.000
-6-17	-7-17	-8-17	-9-17	-10-17		1.062
-6-18	-7-18	-8-18	-9-18	-10-18		1.125
-6-19	-7-19	-8-19	-9-19	-10-19		1.187
-6-20	-7-20	-8-20	-9-20	-10-20		1.250
-6-21	-7-21	-8-21	-9-21	-10-21		1.312
-6-22	-7-22	-8-22	-9-22	-10-22		1.375
-6-23	-7-23	-8-23	-9-23	-10-23		1.437
-6-24	-7-24	-8-24	-9-24	-10-24		1.500
-6-25	-7-25	-8-25	-9-25	-10-25		1.562
-6-26	-7-26	-8-26	-9-26	-10-26		1.625
-6-27	-7-27	-8-27	-9-27	-10-27		1.687
-6-28	-7-28	-8-28	-9-28	-10-28		1.750

TABLE 8

.375-24 SIZE FIRST DASH NO.-6	G GRIP				L
	.218	.250	.281	.312	LENGTH
-7-7					.437
-7-8	-8-8	-9-8			.500
-7-9	-8-9	-9-9	-10-9		.562
-7-10	-8-10	-9-10	-10-10		.625
-7-11	-8-11	-9-11	-10-11		.687
-7-12	-8-12	-9-12	-10-12		.750
-7-13	-8-13	-9-13	-10-13		.812
-7-14	-8-14	-9-14	-10-14		.875
-7-15	-8-15	-9-15	-10-15		.937
-7-16	-8-16	-9-16	-10-16		1.000
-7-17	-8-17	-9-17	-10-17		1.062
-7-18	-8-18	-9-18	-10-18		1.125
-7-19	-8-19	-9-19	-10-19		1.187
-7-20	-8-20	-9-20	-10-20		1.250
-7-21	-8-21	-9-21	-10-21		1.312
-7-22	-8-22	-9-22	-10-22		1.375
-7-23	-8-23	-9-23	-10-23		1.437
-7-24	-8-24	-9-24	-10-24		1.500
-7-25	-8-25	-9-25	-10-25		1.562
-7-26	-8-26	-9-26	-10-26		1.625
-7-27	-8-27	-9-27	-10-27		1.687
-7-28	-8-28	-9-28	-10-28		1.750

NOTES; UNLESS OTHERWISE SPECIFIED:

1. MATERIAL: A286 CRES PER AMS5731, AMS5737.
2. HEAT TREAT: 140,000 PSI MINIMUM TENSILE PER AMS5737.
3. FINISH: PASSIVATED PER AMS-QQ-P-35.
4. HEAD: 100° FLUSH HEAD PER NAS1102.
- <5> PART MARKING: HEAD OF SCREW TO BE MARKED WITH TRIDAIR LOGO, FIRST, SECOND AND THIRD DASH NUMBERS DEPRESSED .010 MAXIMUM DEEP.
6. SCREW TO BE USED WITH CA2210-() R RETAINING RING TO CAPTIVATE TO PANEL.
7. PANEL PREPARATION: REFER TO CAL-STD-0260.
8. INSTALLATION: REFER TO TRIDAIR DRAWING NUMBER CA2210T-().
- <9> TENSILE AND SHEAR STRENGTHS ARE CALCULATED VALUES.
- <10> APPLIES TO PARTS WITH GRIPS LENGTHS ("G") OF 2 TIMES "D" DIAMETER AND LONGER.
11. PART CALLOUT EXAMPLE:



13. TOLERANCE, UNLESS OTHERWISE SPECIFIED: DECIMALS .XX ±.02, .XXX ±.010, ANGLES ± 2°.

INTERIM DOCUMENT REVISION		
Rev.	Date	DAF #
A1	10/25/10	9430

SCANNED

PROJECT NUMBER: 95-063

APPROVED DATE 17 NOV 94 U.S.	FAIRCHILD FASTENERS ENGINEERING CENTER 3000 WEST LOMITA BOULEVARD TORRANCE, CA 90505	CAGE CODE 29372 TRIDAIR PRODUCT
REV. LETTER AND DATE A 1 MAR 00		SCREW, CAPTIVE, 100° HEAD, CRES, 140 KSI
DAF NUMBER DAF 47029 CA		